

Std. Dwg. No.	Descriptions	Std. Dwg. No.	Descriptions
	AIR VALVES		WATER CONNECTIONS AND METERING
W-0010	AIR VALVE PIT, ϕ 50 AND ϕ 80 VALVES	W-0090	WATER CONNECTIONS SINGLE AND DOUBLE ABOVE GROUND METER
	AS CONSTRUCTED	W-0091	WATER CONNECTION SINGLE AND DOUBLE BELOW GROUND METER
W-0020	WATER RETICULATION, SAMPLE AS CONSTRUCTED PLAN	W-0092	WATER CONNECTION SINGLE AND DOUBLE ABOVE GROUND METER ALTERNATIVES
W-0021	WATER TRUNK MAIN, SAMPLE AS CONSTRUCTED PLAN	W-0093	SUPPLY WITH AND WITHOUT BYPASS
	BACKFLOW	W-0094	INDUSTRIAL WATER METERING COMBINED FIRE MAIN & DOMESTIC SUPPLY 80mm OR GREATER
W-0030	BACKFLOW PREVENTION DEVICE, SLAB AND POLE MOUNTED CUBICLE	W-0095	WATER SERVICE METERS MULTIPLE OFF-TAKE MANIFOLD WITH 50mm INPUT SUPPLY
W-0031	BACKFLOW PREVENTION, FIRE AND DOMESTIC SERVICE CONNECTION DETAILS, TYP. LAYOUT	W-0096	WATER SERVICE METERS MULTIPLE OFF-TAKE MANIFOLDS WITH 100mm INPUT SUPPLY
	BEDDING AND THRUST BLOCKS	W-0097	STANDARD WATER METER LOCATIONS
W-0040	BEDDING AND BACKFILL FOR WATER MAIN CONSTRUCTION	W-0100	DOMESTIC/COMMERCIAL SUPPLY 50mm METER
W-0041	WATER MAIN, THRUST BLOCK DETAILS		
W-0042	ROAD CONDUIT CROSSINGS FOR WATER AND IRRIGATION LINES (100mm TO 800mm ϕ)		
W-0043	WATER MAIN OFFSET CONNECTION NEW TO EXISTING		
	HYDRANTS AND VALVES		
W-0060	HYDRANT AND VALVE INSTALLATION		
W-0061	C.I. HYDRANT AND VALVE BOXES		
W-0062	TYPICAL VALVE BOX INSTALATION DETAILS TO SUIT 500 ϕ MAIN		
W-0063	TYPICAL VALVE AND HYDRANT TREATMENT WHEN LOCATED IN SEALED DRIVEWAYS AND FOOTPATHS		
	SCOUR		
W-0080	SCOUR DETAILS		

	REVISIONS	DATE
E	GENERAL UPDATES AND STANDARD REFERENCING AMENDMENTS	27/4/16
D	W-0043b ADDED	27/9/10
C	STANDARD TEMPLATE, 92 TO 97 ADDED	8/7/08
B	W-0010,W-0020-21,W-0030-31,W-0041-42,W-0090-91	10/3/98
A	ORIGINAL ISSUE	1/3/97



Email: info@whitsundayrc.qld.gov.au Web: www.whitsundayrc.qld.gov.au

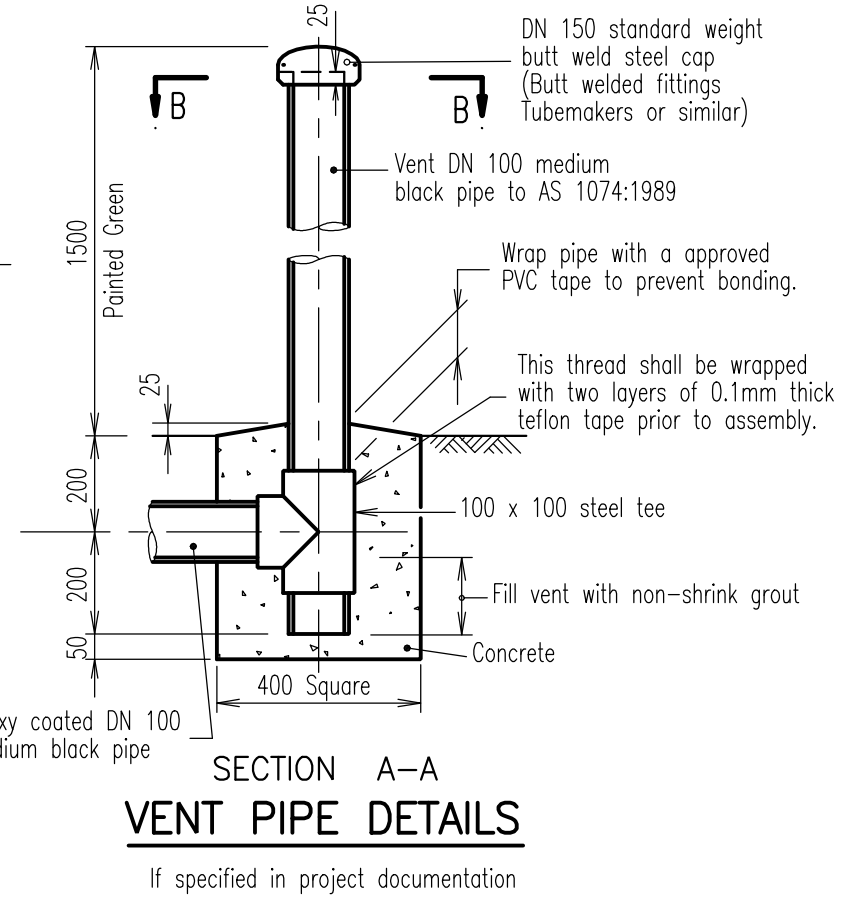
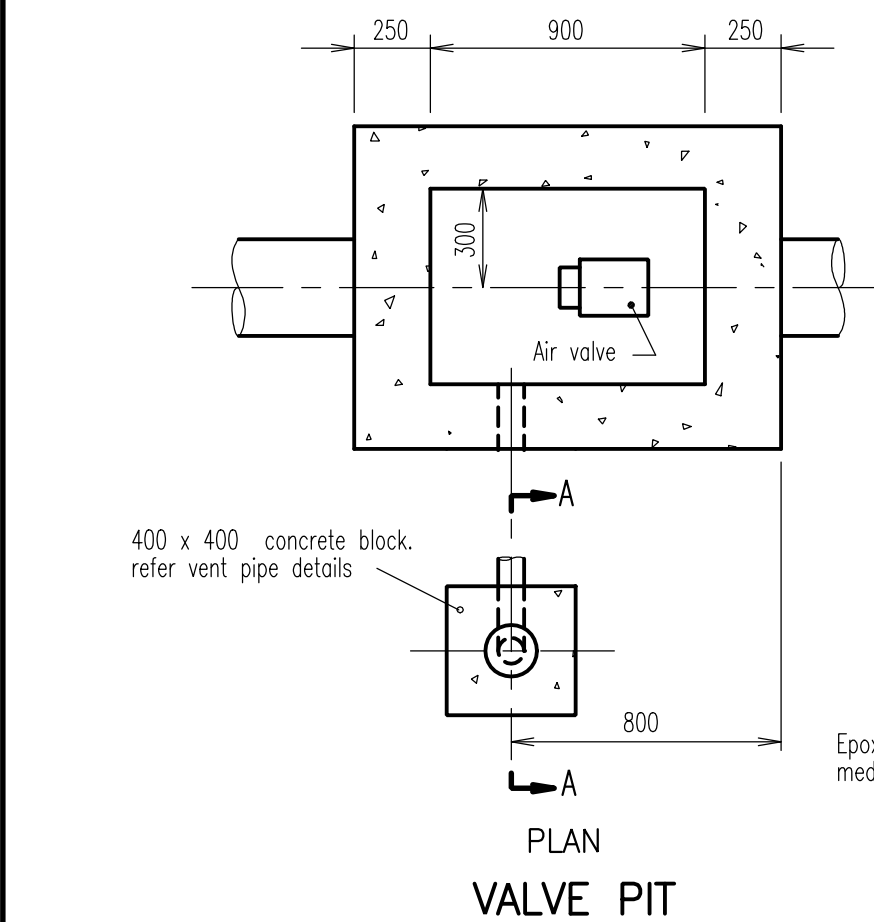
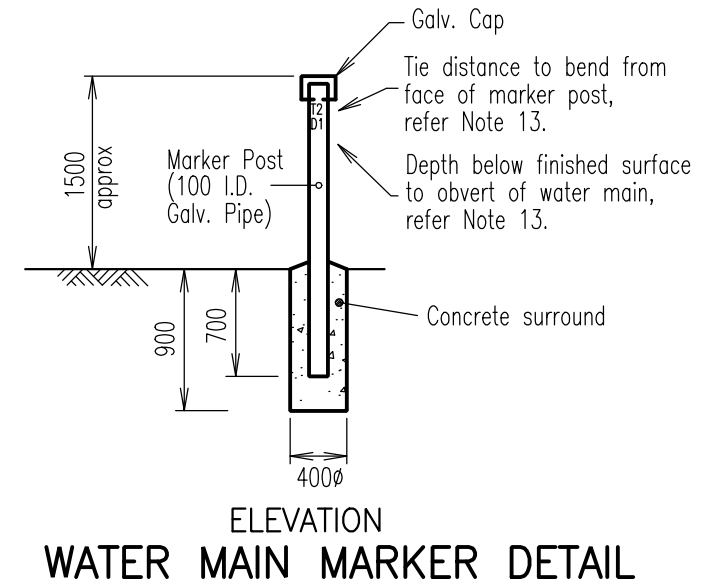
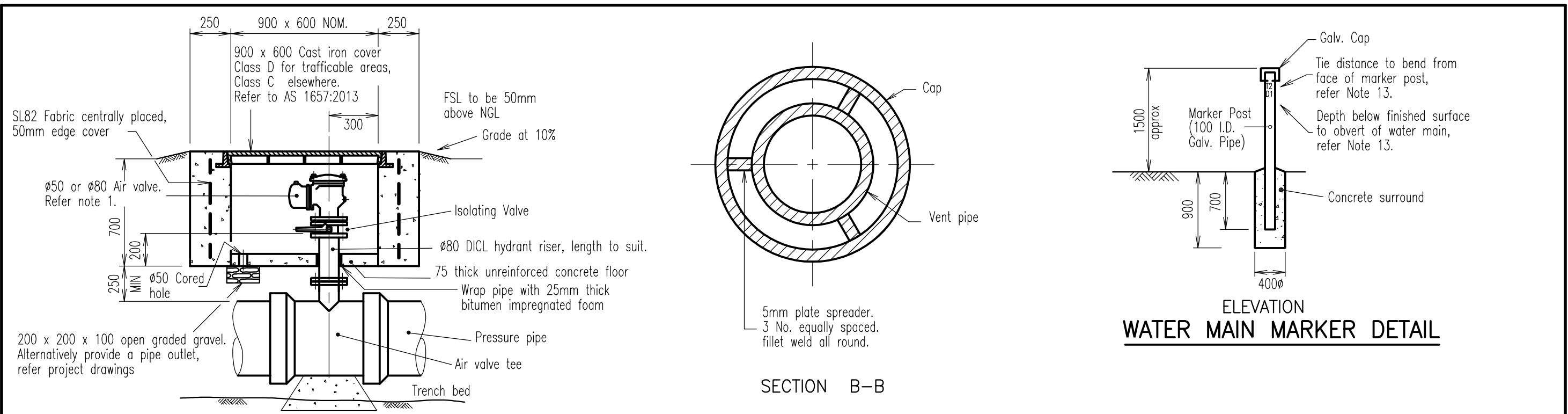
BOWEN
67 Herbert St
Bowen 4805 Q
Ph 07 4761 3600

COLLINSVILLE
Cnr Stanley & Conway Sts
Collinsville 4804 Q
Ph 07 4785 5366

PROSERPINE
83-85 Main St
Proserpine 4800 Q
Ph 07 4945 0200

INDEX STANDARD DRAWINGS WATER
--

WATER Standard Drawing W-0001
A B C D E



- NOTES:**
- Approved Ø50 and Ø80 Air Valves, fitted with Ø80 butterfly valves for isolation purposes. The installation shall be such that the air valve can be removed while the butterfly valve remains in place.
 - Ø50 Air Valves shall be supplied with adaptor flange suitable for connection to the Ø80 DICL riser.
 - The full length of the DICL riser pipe including underground flanges shall be epoxy coated or wrapped with 'Denso' protective coating applied in accordance with the manufacturer's instructions:
 - Denso 360 primer to clean metal;
 - Wrap of cold applied Denso 760 tape;
 - Wrap of Denso 931 self adhesive PVC tape.
 - Water mains Ø250 and smaller:-
Walls of pit to extend below pipe, provide 200mm space between water main and floor of pit.
 - Concrete N25 in accordance with AS 1379:2007 and AS 3600:2009.
 - Reinforcement fabric to AS 4671:2001.
 - Provide a fine non-slip surface with a wood float to the top surface of all walls.
 - Refer project drawing for Vent pipe location. Vent steelwork shall be painted with System Reference LP2-A to AS/NZS 2312:2014.
 - Compacted sand backfill shall be brought up to the underside of the air valve pit.
 - Air valves shall be placed on the high point of all trunk mains.
 - All flanges shall be in accordance with AS 2129:2000 - Table C unless noted otherwise on project drawings.
 - Position markers at changes of direction and all fence lines.
 - Lettering on side of marker shall be positioned directly on line between marker and water main bend. All lettering shall be painted yellow and shall be minimum 30 high x 20 wide.
 - All dimensions in millimetres.

REVISIONS	DATE
D GENERAL UPDATES AND STANDARD REFERENCING AMENDMENTS	27/4/16
C GENERAL UPDATES	15/3/12
B MINOR CHANGES TO ELEVATION DETAIL	24/8/10
A ORIGINAL ISSUE	1/3/97



Email: info@whitsundayrc.qld.gov.au Web: www.whitsundayrc.qld.gov.au

BOWEN
67 Herbert St
Bowen 4805 Q
Ph 07 4761 3600

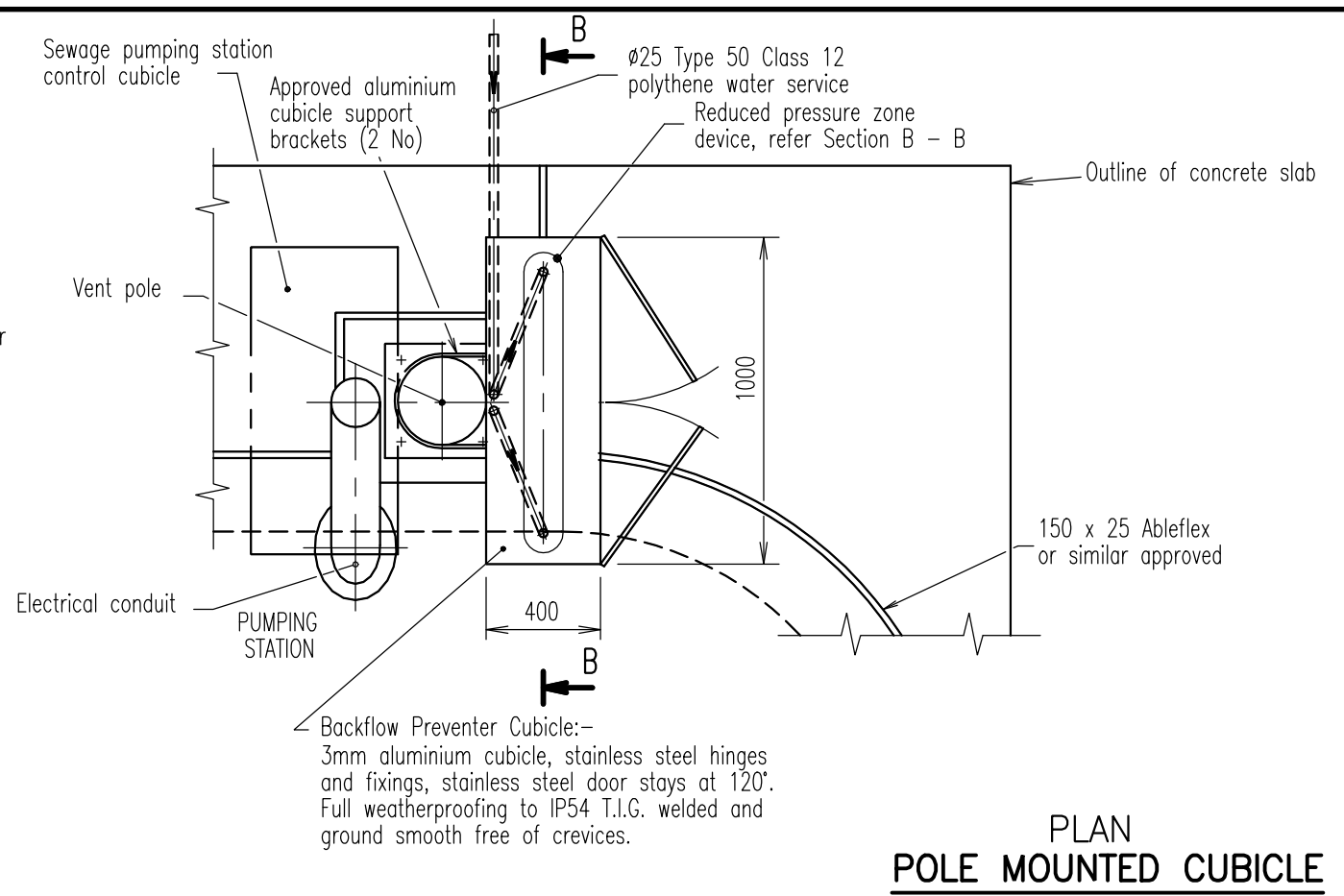
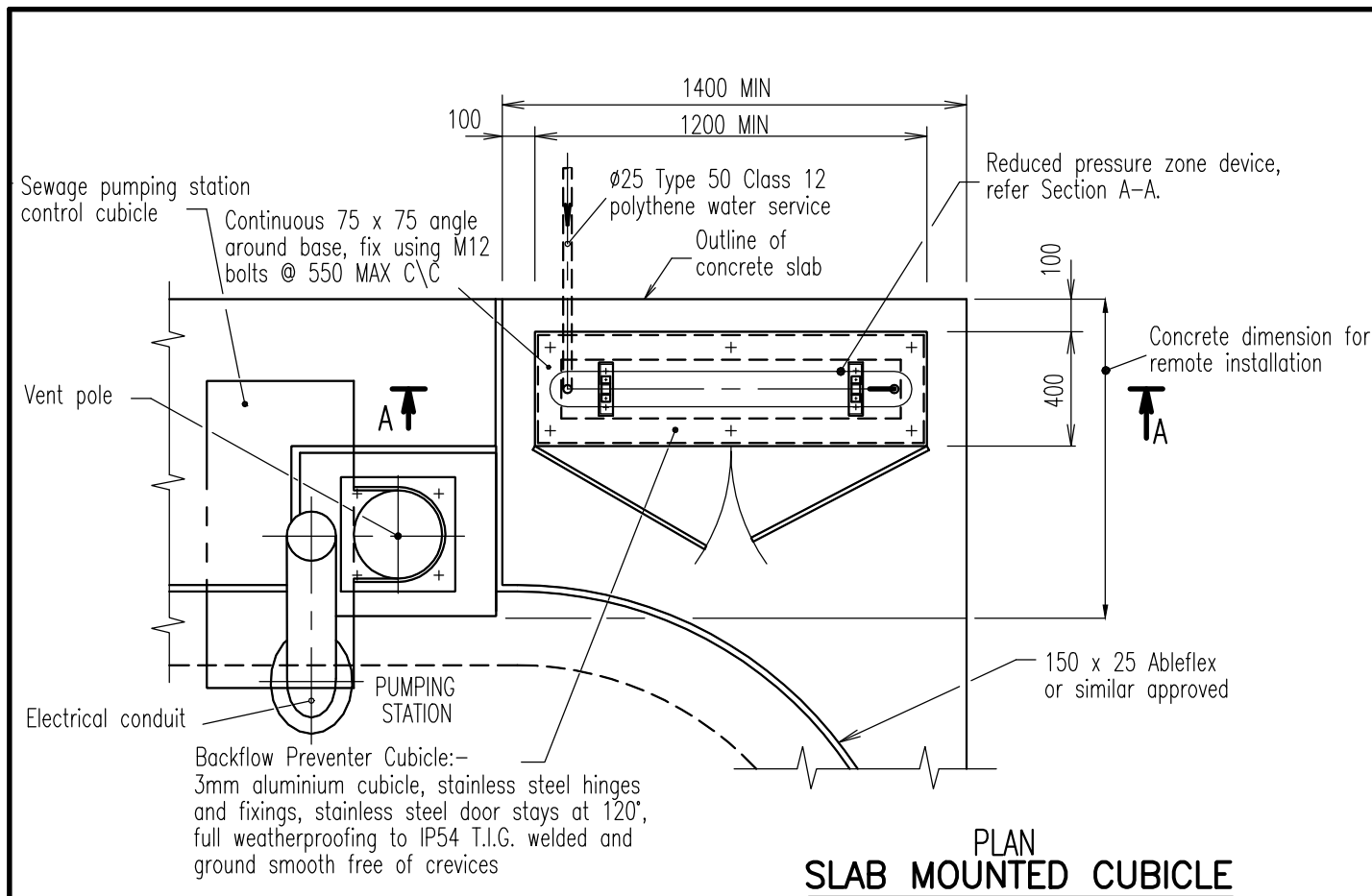
COLLINSVILLE
Cnr Stanley & Conway Sts
Collinsville 4804 Q
Ph 07 4785 5366

PROSERPINE
83-85 Main St
Proserpine 4800 Q
Ph 07 4945 0200

AIR VALVE PIT
Ø50 AND Ø80 AIR VALVES

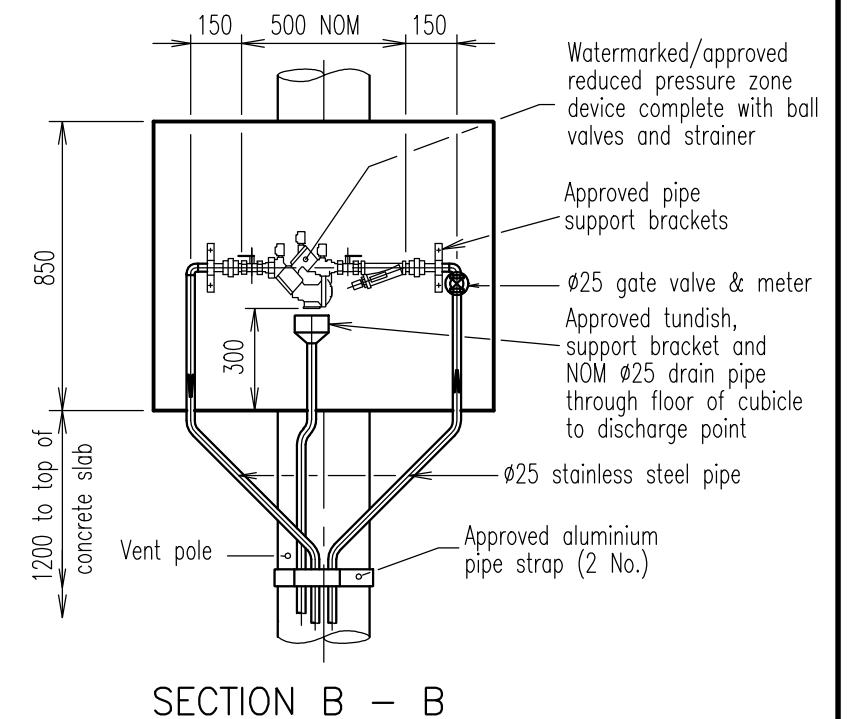
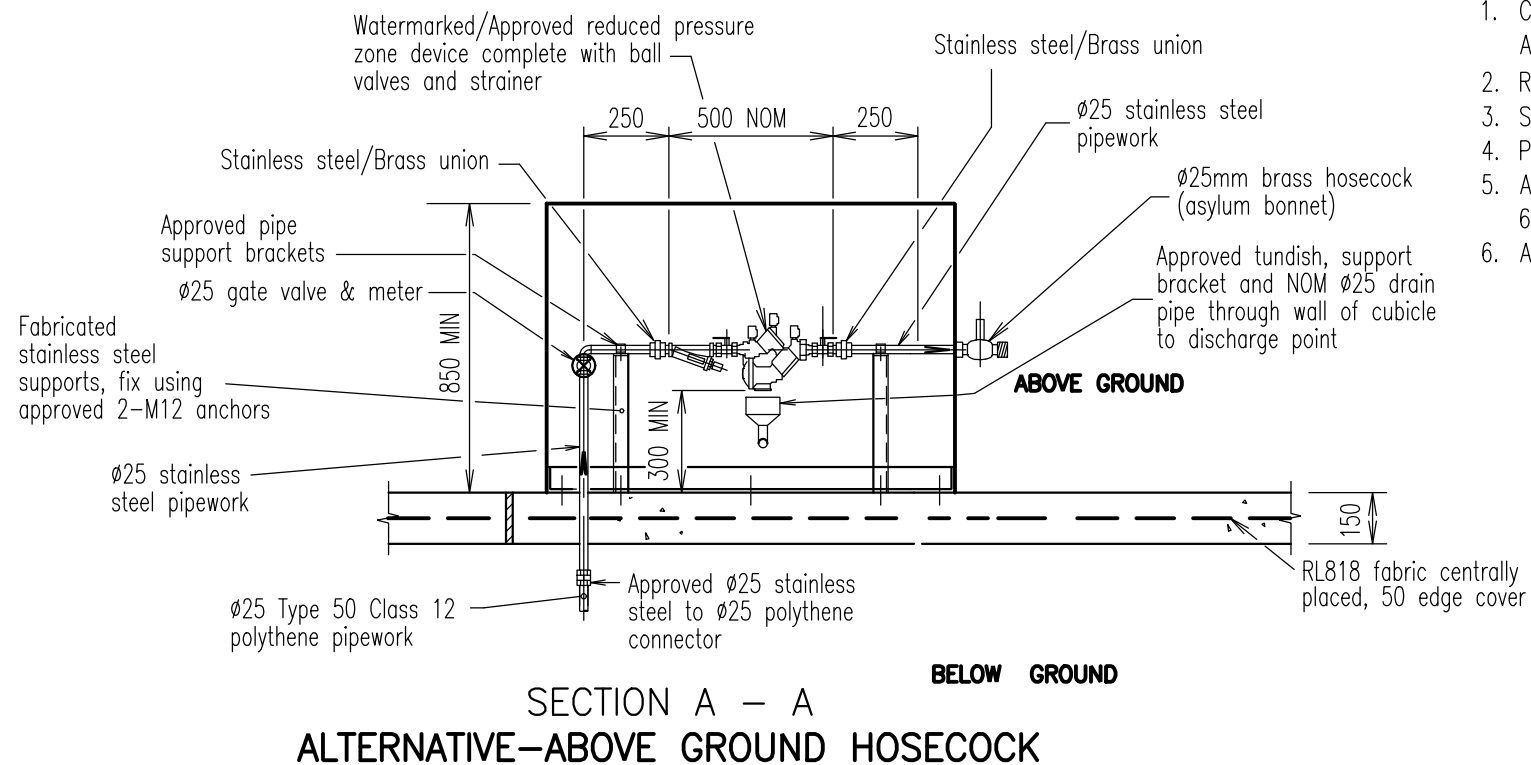
WATER
Standard
Drawing
W-0010

A	B	C	D
---	---	---	---



NOTES:

1. Concrete N32 in accordance with AS 1379:2007 and AS 3600:2009.
2. Reinforcement fabric to AS/NZS 4671:2001.
3. Stainless steel Grade AS 1444:2007.
4. Polythene pipework to AS 4130:2001.
5. Aluminium Sheet 5083-H321, Extruded sections 6061-T6, to AS 2848:1998.
6. All dimensions in millimetres.



REVISIONS	DATE
E GENERAL UPDATES AND STANDARD REFERENCING AMENDMENTS	27/4/16
D GENERAL UPDATES	26/3/12
C TEXT CHANGES	24/8/10
B MINOR AMENDMENT	1/3/97
A ORIGINAL ISSUE	1/3/97



Email: info@whitsundayrc.qld.gov.au Web: www.whitsundayrc.qld.gov.au

BOWEN
67 Herbert St
Bowen 4805 Q
Ph 07 4761 3600

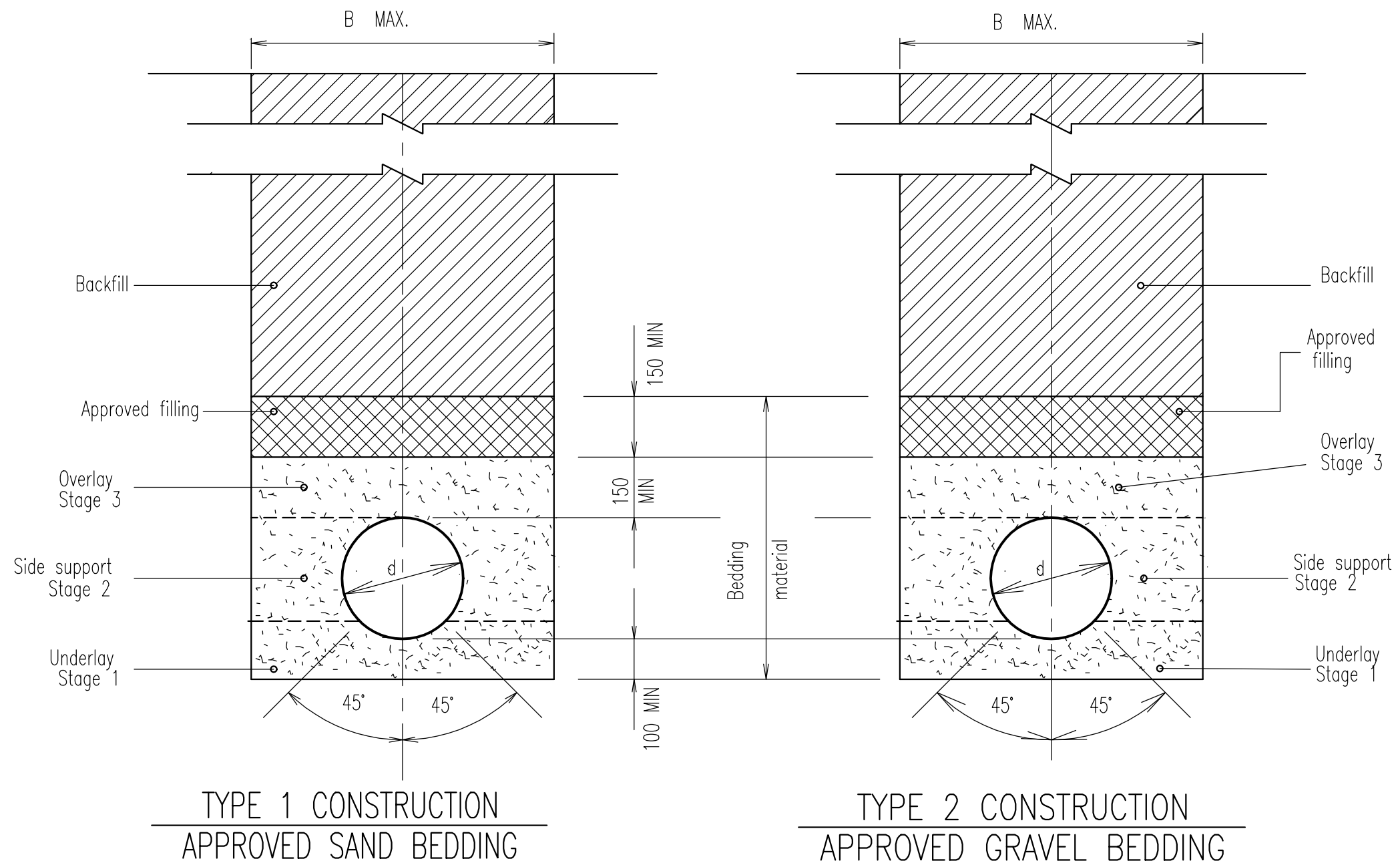
COLLINSVILLE
Cnr Stanley & Conway Sts
Collinsville 4804 Q
Ph 07 4785 5366

PROSERPINE
83-85 Main St
Proserpine 4800 Q
Ph 07 4945 0200

**BACKFLOW PREVENTION DEVICE
SLAB AND POLE MOUNTED CUBICLE**

**WATER
Standard
Drawing
W-0030**

A B C D E



Refer to TMR standards for bedding and backfill details where conditions vary from those shown hereon, and when required under local & TMR roadways.

- NOTES:**
- Refer specification for definition of:
 - (a) Bedding material
 - (b) Approved filling
 - (c) Flexible pipe systems
 - (d) Geofabric
 - (e) Backfill
 - (f) Stabilized sand filling
 - (g) Lean mix concrete
 - (h) Pavement
 - Spacing of concrete anchor blocks
 - Slope 1 in 5 to 1 in 6 – every 4th pipe
 - Slope 1 in 4 to 1 in 5 – every 3rd pipe
 - Slope 1 in 3 to 1 in 4 – every 2nd pipe
 - Slope greater than 1 in 3 – every pipe.
 - Concrete N20 in accordance with AS 1379:2007 and AS 3600:2009.
 - Refer project drawings for dimensions to be adopted where MIN's have been shown.
 - All dimensions in millimetres

TYPE 1 CONSTRUCTION
APPROVED SAND BEDDING

TYPE 2 CONSTRUCTION
APPROVED GRAVEL BEDDING

NOM DIA. PIPE	d	Ø100	Ø150	Ø225	Ø300	Ø375	Ø450	Ø525	Ø600	Ø675	Ø750	Ø825	Ø900
OPEN TRENCH	B	600	600	700	750	850	900	1000	1050	1150	1300	1300	1450
TUNNEL CONST.	B	750	750	750	900	900	1000	1050	1150	1220	1300	1350	1450
	H	1100	1100	1100	1200	1200	1400	1400	1400	1450	1500	1600	1650

NOTE:- d = NOMINAL DIAMETER OF PIPE

REVISIONS	DATE
C GENERAL UPDATES AND STANDARD REFERENCING AMENDMENTS	27/4/16
B GENERAL UPDATES	26/3/12
A ORIGINAL ISSUE	1/3/97



Email: info@whitsundayrc.qld.gov.au Web: www.whitsundayrc.qld.gov.au

BOWEN
67 Herbert St
Bowen 4805 Q
Ph 07 4761 3600

COLLINSVILLE
Cnr Stanley & Conway Sts
Collinsville 4804 Q
Ph 07 4785 5366

PROSERPINE
83-85 Main St
Proserpine 4800 Q
Ph 07 4945 0200

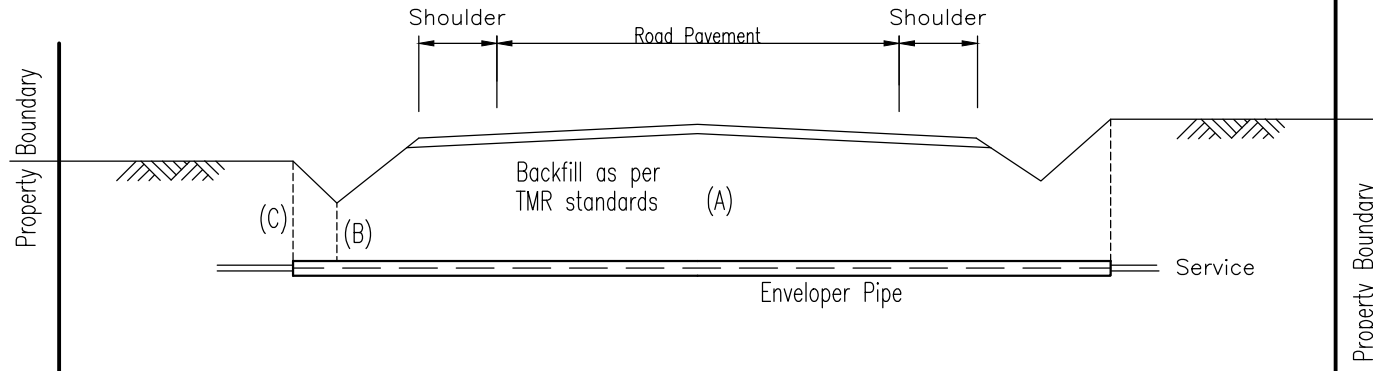
**BEDDING AND BACKFILL FOR
WATER MAIN CONSTRUCTION**

WATER
Standard
Drawing
W-0040

A	B	C	
---	---	---	--

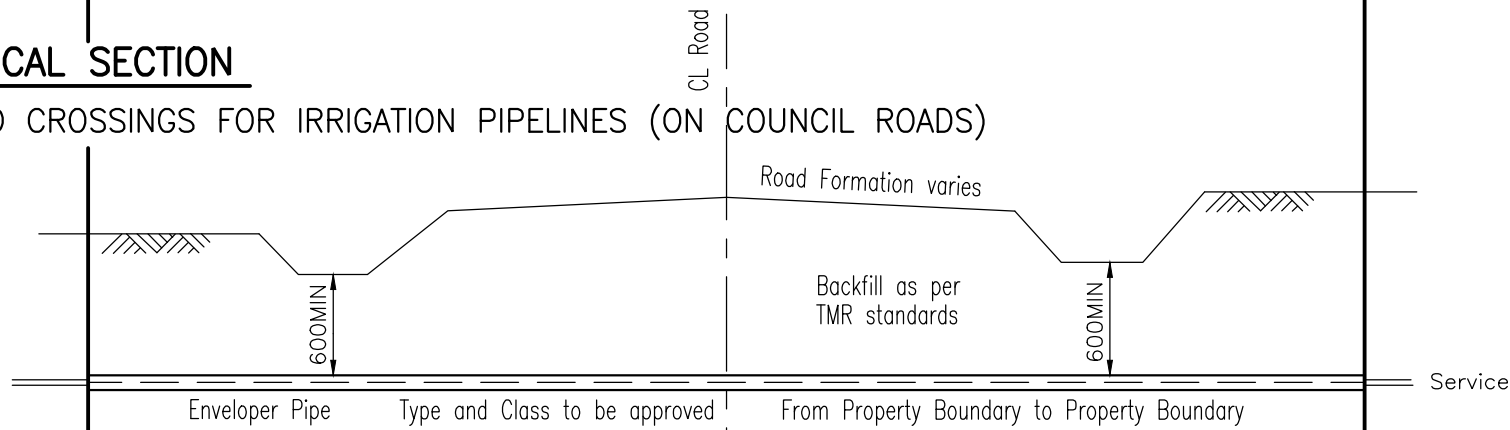
TYPICAL SECTION

TMR ROAD CROSSINGS—TRENCHING



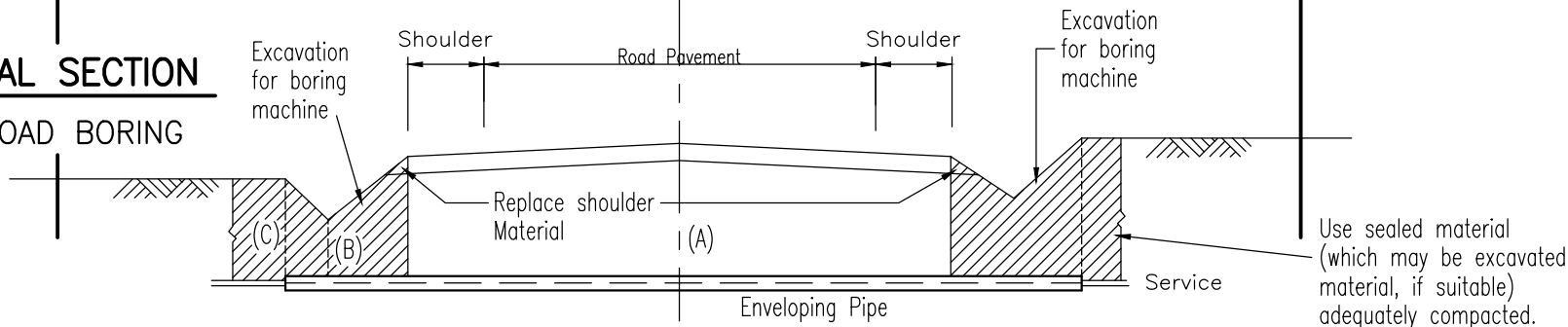
TYPICAL SECTION

ROAD CROSSINGS FOR IRRIGATION PIPELINES (ON COUNCIL ROADS)



TYPICAL SECTION

TMR ROAD BORING



NOTES:

1. Backfilling of trenching details as per TMR standards.
2. Enveloper pipe class details and treatments refer to Water Services Association of Australia (WSAA) drawings 1212 and 1214

NOTES FOR TMR ROAD CROSSINGS:

1. Minimum depth of service shall be (A) 750mm below road surface, (B) 450mm below lowest level of table drain, or (C) 600mm below natural Surface, whichever is the lowest.
2. Where there is no Bitumen seal, the Lean Mix Concrete is to be continued to 150mm below surface level of road.
3. All work shall be in accordance with TMR Standard Conditions.

REVISIONS	DATE
E GENERAL UPDATES AND STANDARD REFERENCING AMENDMENTS	27/4/16
D GENERAL UPDATES	27/3/12
C "OUTSIDE DECLARED WATER AREA" BLOCK, STAR PKT. TO BOUNDRY	11/7/07
B QT ROAD BORING ADDED	10/3/98
A ORIGINAL ISSUE	1/3/97



Whitsunday
Regional Council

Email: info@whitsundayrc.qld.gov.au Web: www.whitsundayrc.qld.gov.au

BOWEN
67 Herbert St
Bowen 4805 Q
Ph 07 4761 3600

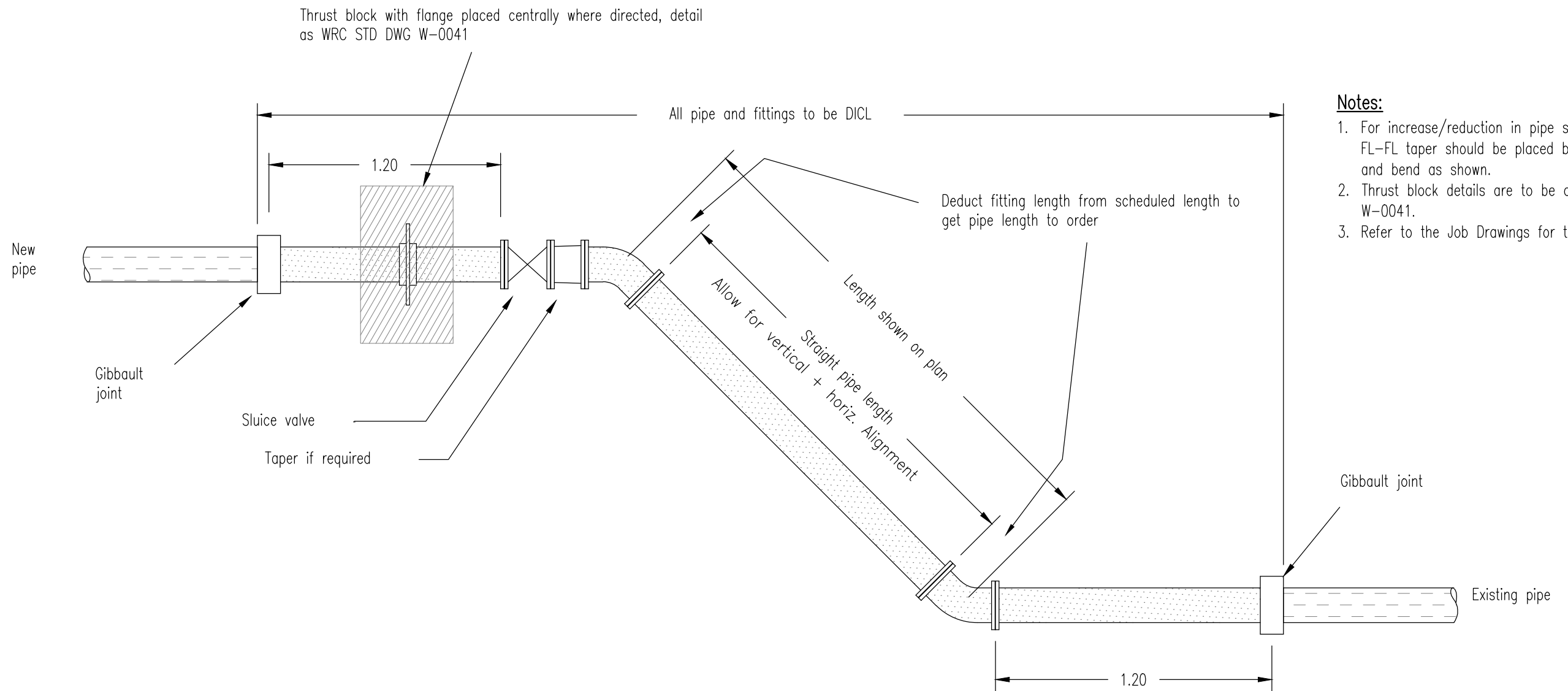
COLLINSVILLE
Cnr Stanley & Conway Sts
Collinsville 4804 Q
Ph 07 4785 5366

PROSERPINE
83-85 Main St
Proserpine 4800 Q
Ph 07 4945 0200

**ROAD CONDUIT CROSSINGS FOR
WATER AND IRRIGATION LINES
(100mm TO 800mm ϕ)**

**WATER
Standard
Drawing
W-0042**

A B C D E



Notes:

1. For increase/reduction in pipe sizes a FL-FL taper should be placed between the SV and bend as shown.
2. Thrust block details are to be as WRC STD DWG W-0041.
3. Refer to the Job Drawings for the fitting list.

REVISIONS		DATE
D	GENERAL UPDATES AND STANDARD REFERENCING AMENDMENTS	27/4/16
C	GENERAL UPDATES	27/3/12
B	CHANGES TO TEXT	25/8/10
A	ORIGINAL ISSUE	1/3/97



Whitsunday
Regional Council

Email: info@whitsundayrc.qld.gov.au Web: www.whitsundayrc.qld.gov.au

BOWEN
67 Herbert St
Bowen 4805 Q
Ph 07 4761 3600

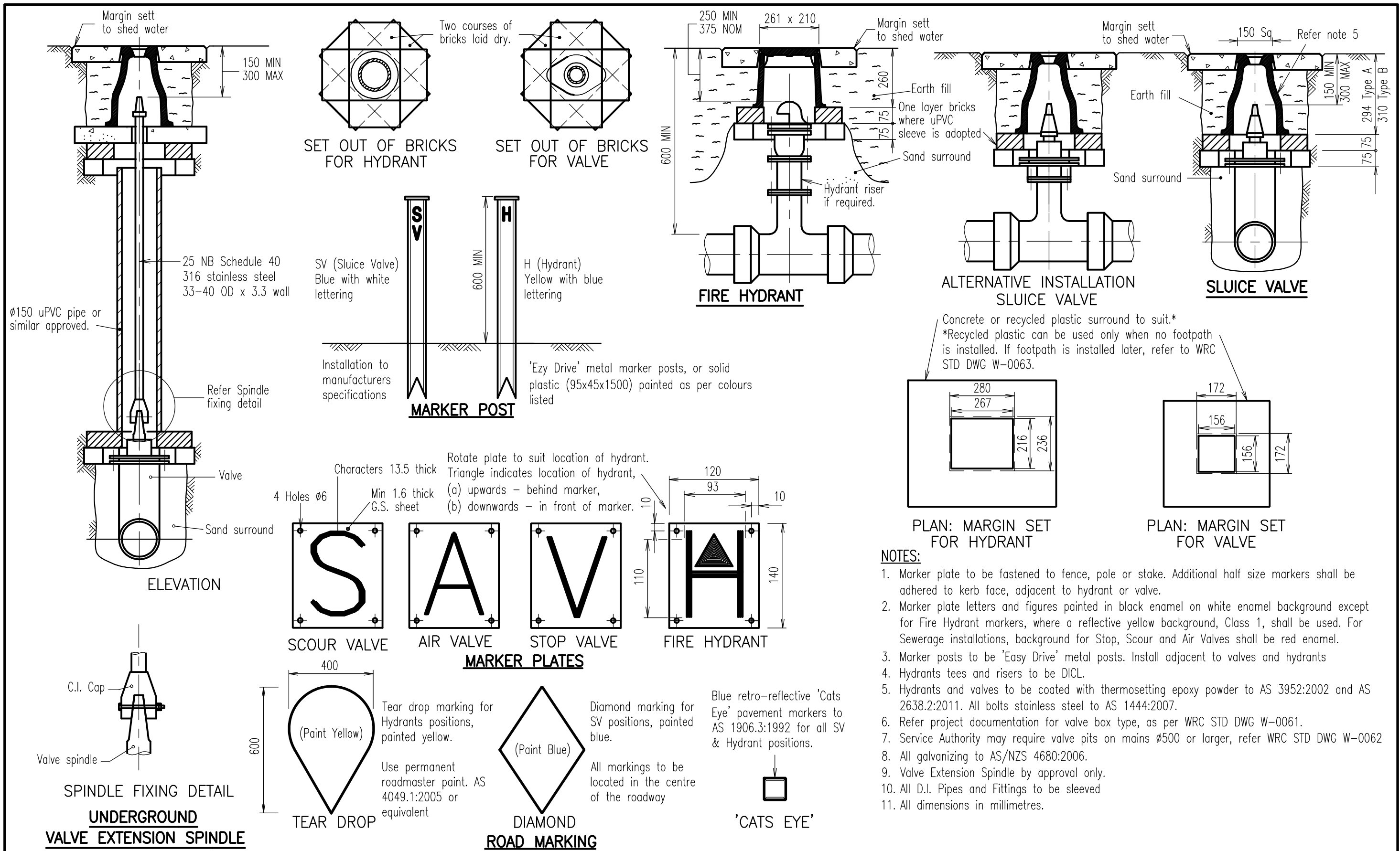
COLLINSVILLE
Cnr Stanley & Conway Sts
Collinsville 4804 Q
Ph 07 4785 5366

PROSERPINE
83-85 Main St
Proserpine 4800 Q
Ph 07 4945 0200

**WATER MAIN
OFFSET CONNECTION
NEW TO EXISTING**

**WATER
Standard
Drawing
W-0043**

A B C D



REVISIONS	DATE
D GENERAL UPDATES AND STANDARD REFERENCING AMENDMENTS	27/4/16
C GENERAL UPDATES	28/3/12
B DETAILS ADDED AND MODIFIED	8/10
A ORIGINAL ISSUE	1/3/97

BOWEN
67 Herbert St
Bowen 4805 Q
Ph 07 4761 3600

COLLINSVILLE
Cnr Stanley & Conway Sts
Collinsville 4804 Q
Ph 07 4785 5366

PROSERPINE
83-85 Main St
Proserpine 4800 Q
Ph 07 4945 0200

Whitsunday Regional Council

Email: info@whitsundayrc.qld.gov.au Web: www.whitsundayrc.qld.gov.au

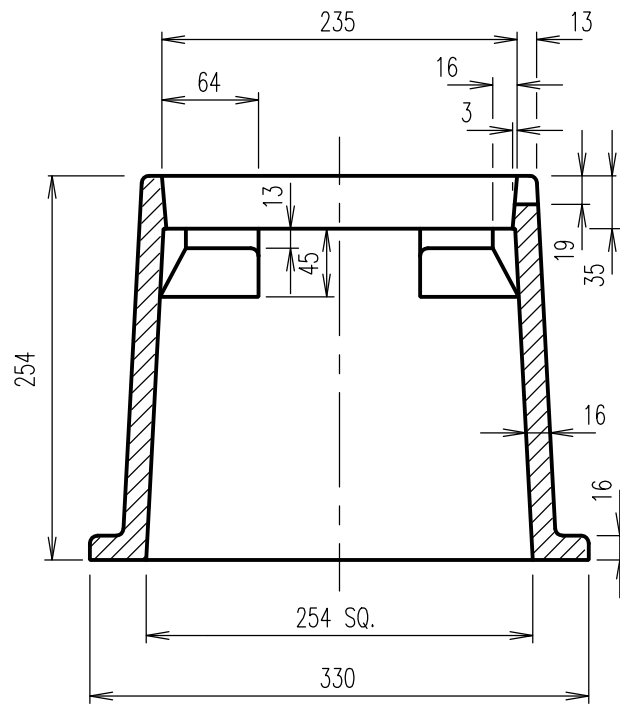
HYDRANT AND VALVE INSTALLATION

WATER Standard Drawing W-0060

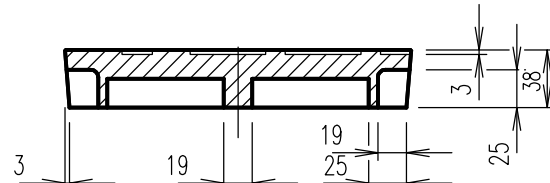
A B C D

NOTES:

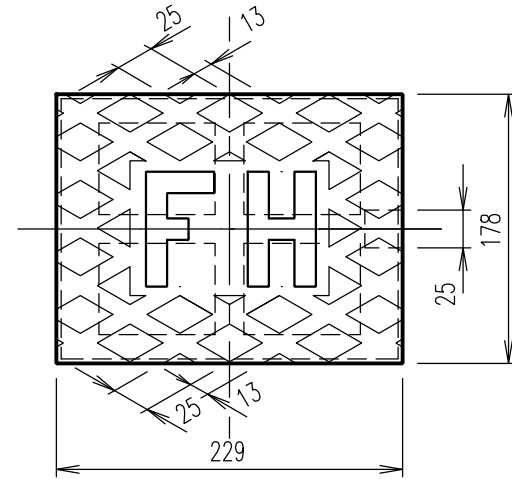
1. Rounding of 5mm NOM. RAD. at all corners.
2. Grey cast Iron, grade \geq T180 to AS 1830:2007.
3. Alternative valve boxes may be adopted where approved by the Service Authority.
4. Refer to WRC STD DWG W-0060 & W-0063 for other installation details.
5. All dimensions in millimetres.



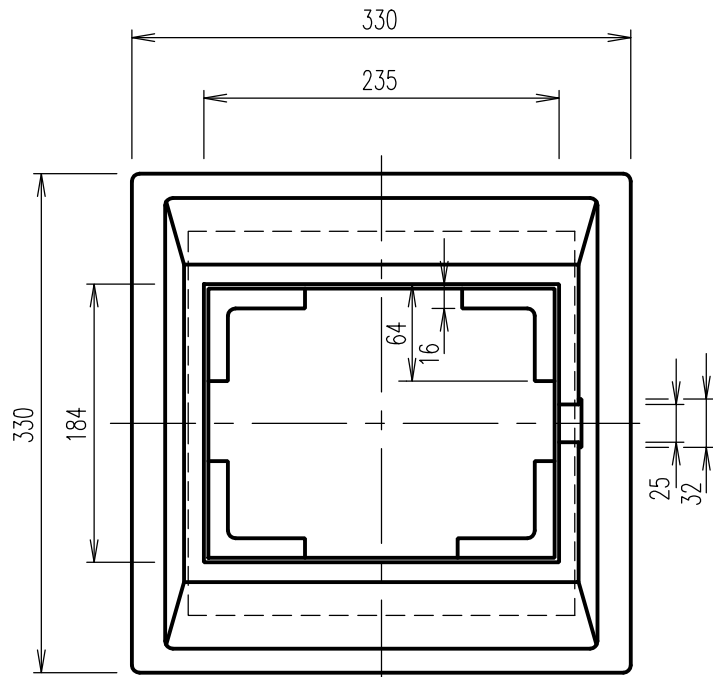
ELEVATION



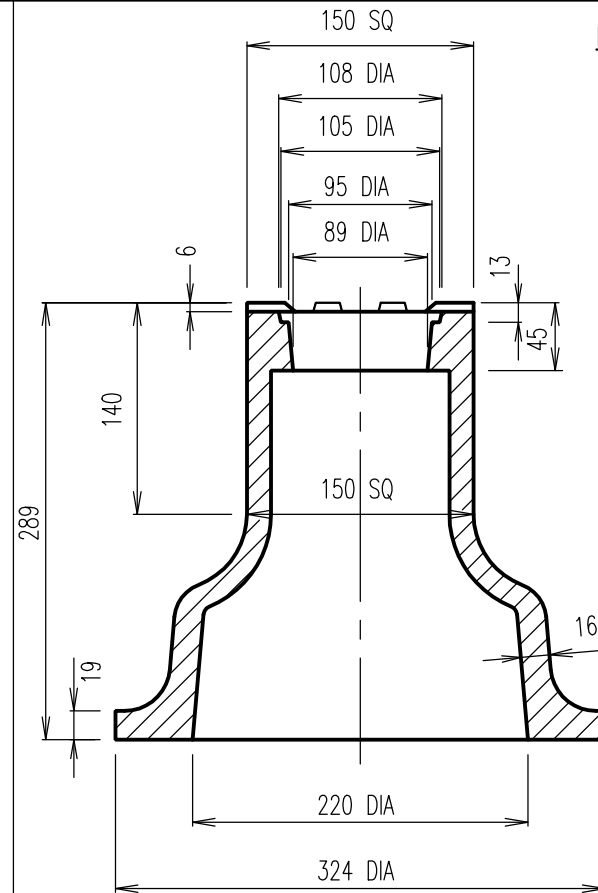
SECTIONAL VIEW



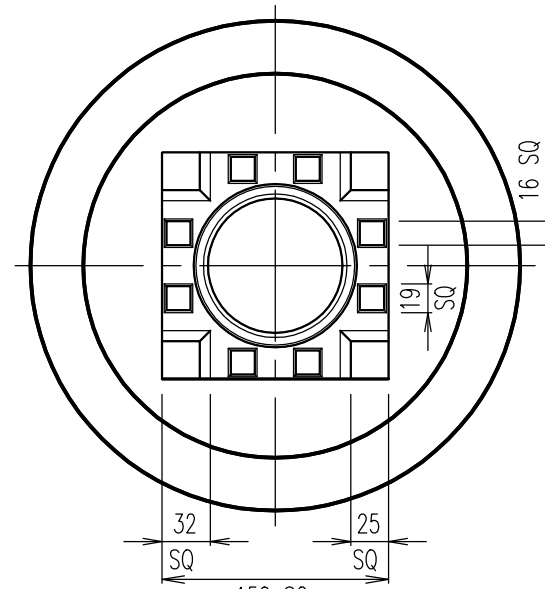
PLAN HYDRANT COVER



PLAN INSPECTION BOX – HYDRANT



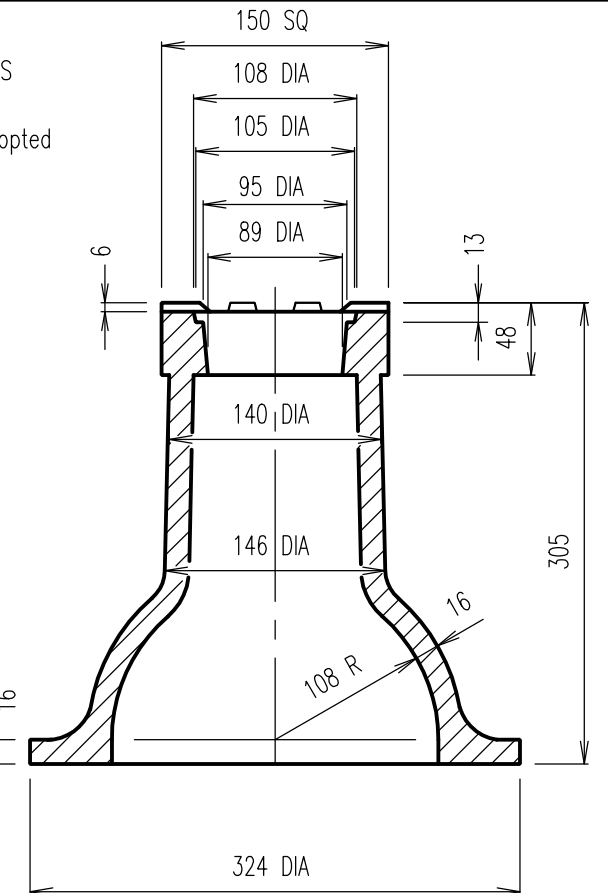
SECTIONAL ELEVATION



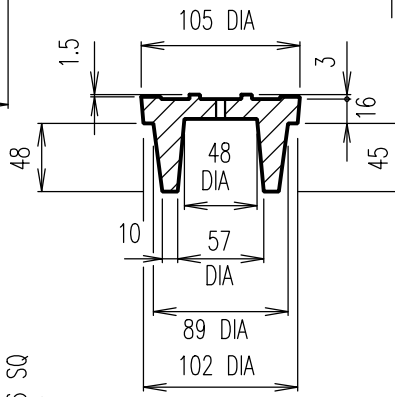
PLAN TYPE A

NOTES:

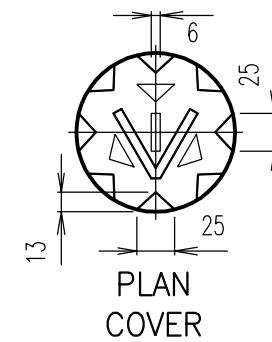
1. Grey cast Iron, grade \geq T180 to AS 1830:2007.
2. Alternative valve boxes may be adopted where approved by the Service Authority.
3. All dimensions in millimetres.



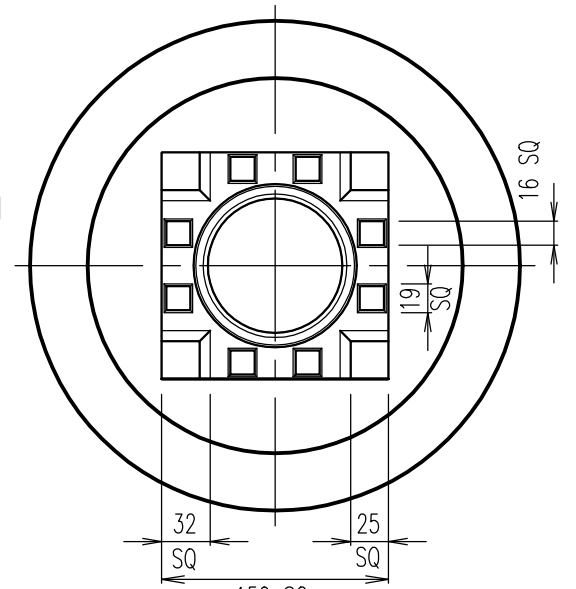
SECTIONAL ELEVATION



SECTIONAL ELEVATION



PLAN COVER



PLAN TYPE B

VALVE BOXES

REVISIONS	DATE
D GENERAL UPDATES AND STANDARD REFERENCING AMENDMENTS	27/4/16
C GENERAL UPDATES	27/3/12
B DETAIL DELETED	9/8/10
A ORIGINAL ISSUE	1/3/97



Whitsunday Regional Council

Email: info@whitsundayrc.qld.gov.au Web: www.whitsundayrc.qld.gov.au

BOWEN
67 Herbert St
Bowen 4805 Q
Ph 07 4761 3600

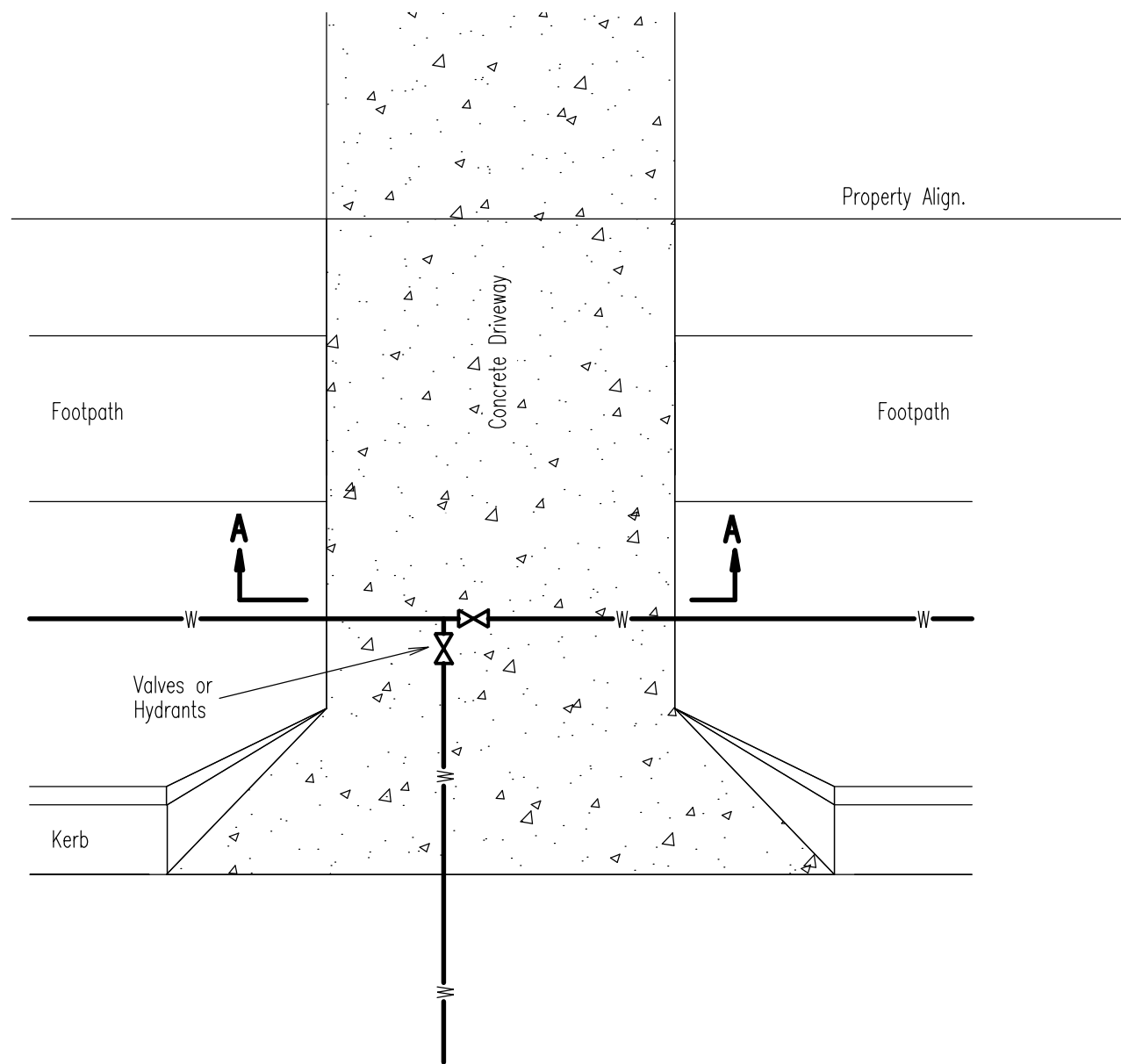
COLLINSVILLE
Cnr Stanley & Conway Sts
Collinsville 4804 Q
Ph 07 4785 5366

PROSERPINE
83-85 Main St
Proserpine 4800 Q
Ph 07 4945 0200

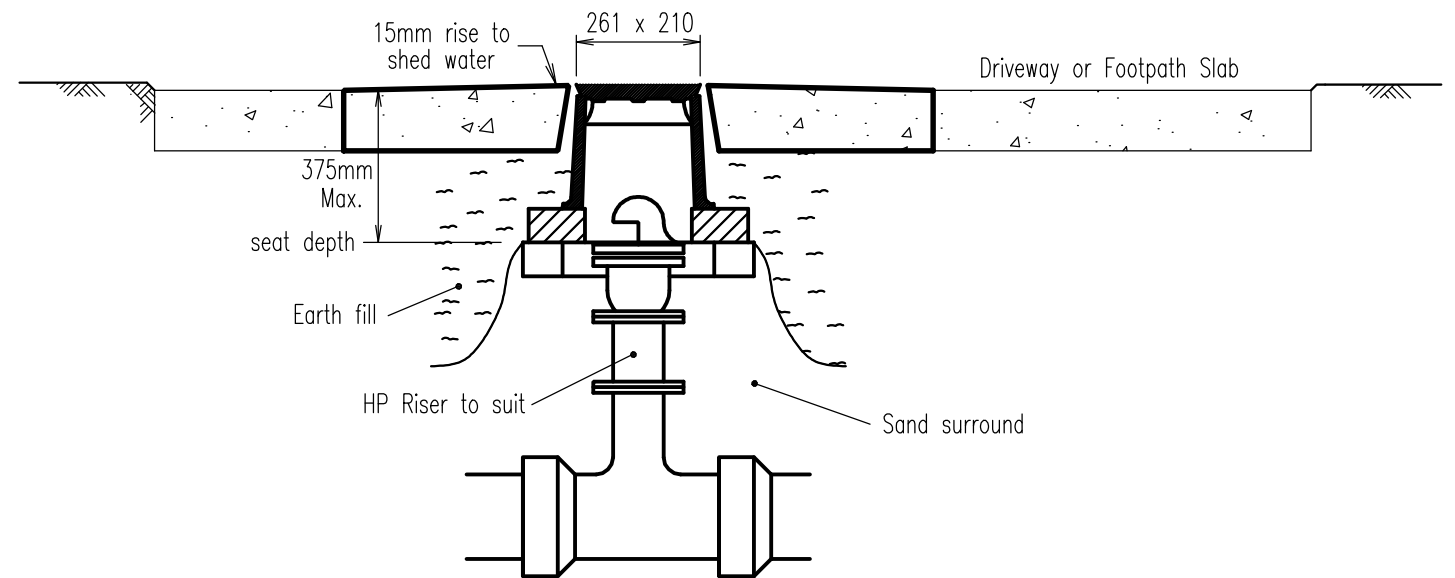
C.I. HYDRANT AND VALVE BOXES

WATER Standard Drawing W-0061

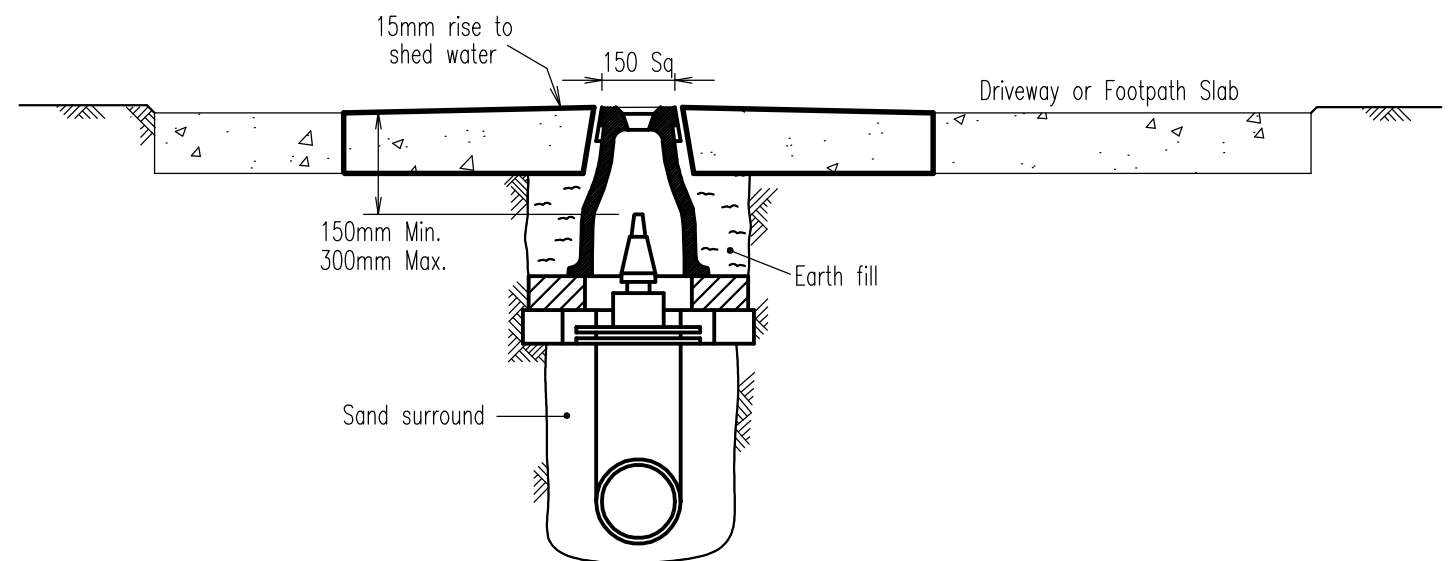
A B C D



VALVES & HYDRANTS IN DRIVEWAYS & FOOTPATHS
 Repair method for concrete driveways and footpaths.



SECTION A-A (HYDRANTS)



SECTION A-A (VALVES)

NOTES:

1. Valve boxes are to be raised to new driveway height.
2. Works are to be inspected by Council.
3. SV marker to be removed from current position and relocated to a suitable position under the direction of council water officers.

REVISIONS	DATE
C GENERAL UPDATES AND STANDARD REFERENCING AMENDMENTS	27/4/16
B GENERAL UPDATES	28/3/12
A ORIGINAL ISSUE	05/2009



Email: info@whitsundayrc.qld.gov.au Web: www.whitsundayrc.qld.gov.au

BOWEN
 67 Herbert St
 Bowen 4805 Q
 Ph 07 4761 3600

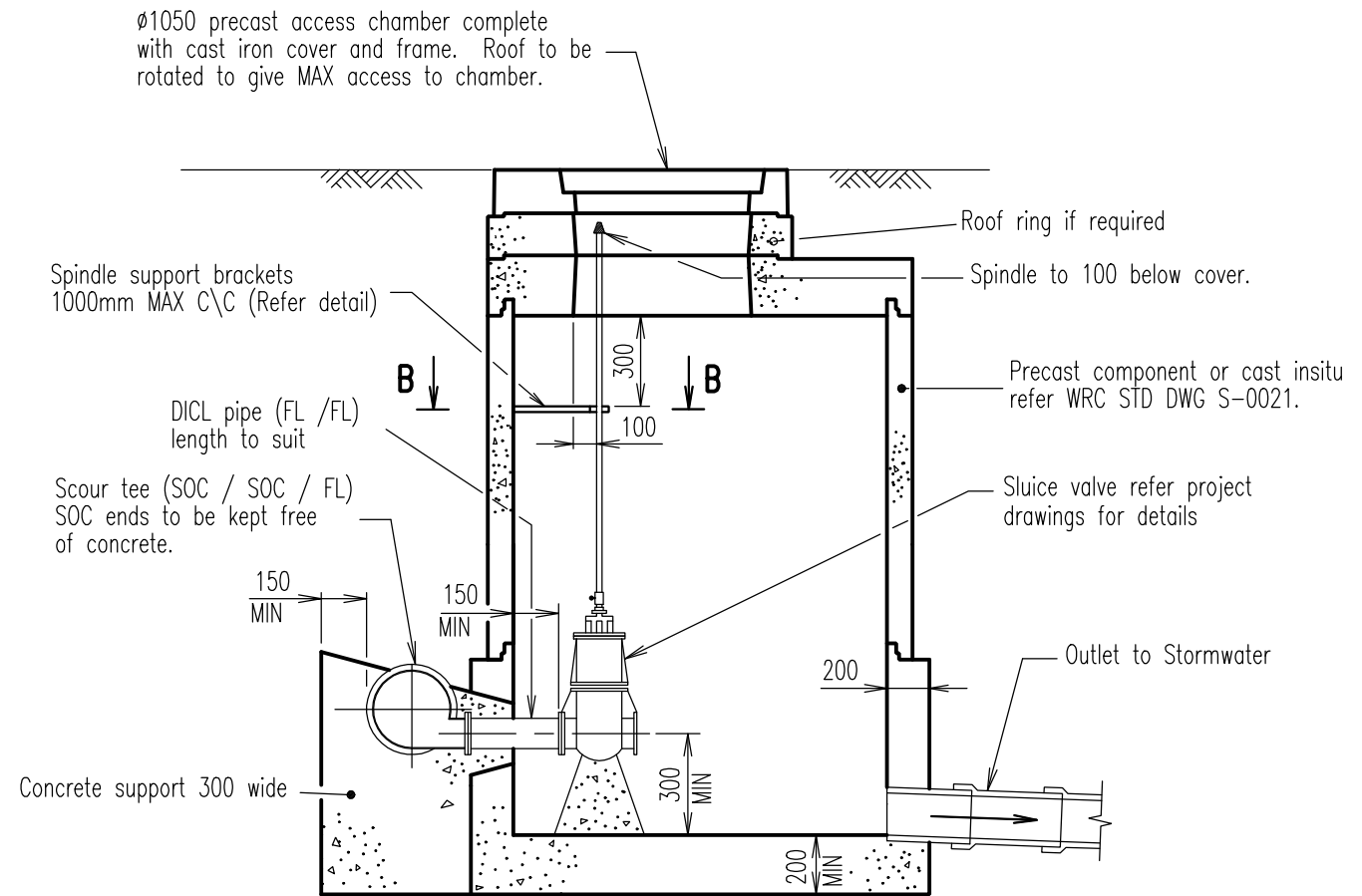
COLLINSVILLE
 Cnr Stanley & Conway Sts
 Collinsville 4804 Q
 Ph 07 4785 5366

PROSERPINE
 83-85 Main St
 Proserpine 4800 Q
 Ph 07 4945 0200

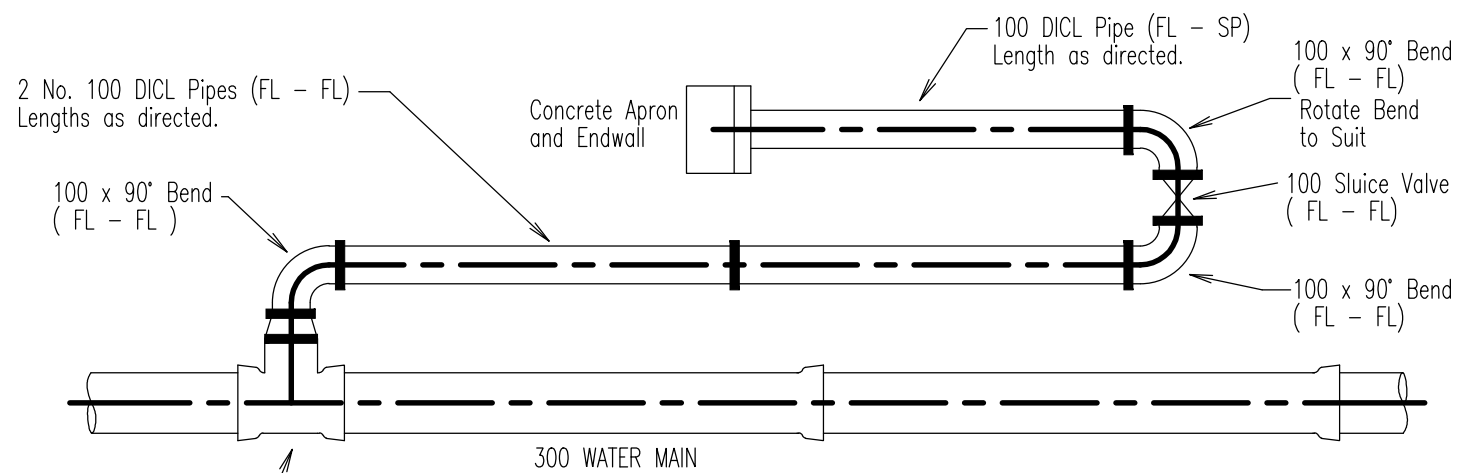
**TYPICAL VALVE & HYDRANT
 TREATMENT WHEN LOCATED IN
 SEALED DRIVEWAYS & FOOTPATHS**

**WATER
 Standard
 Drawing
 W-0063**

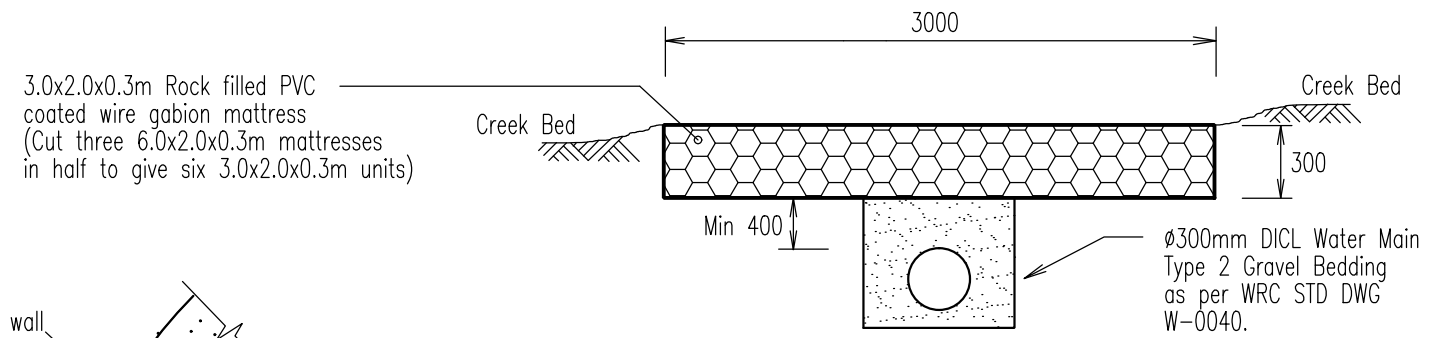
A | B | B |



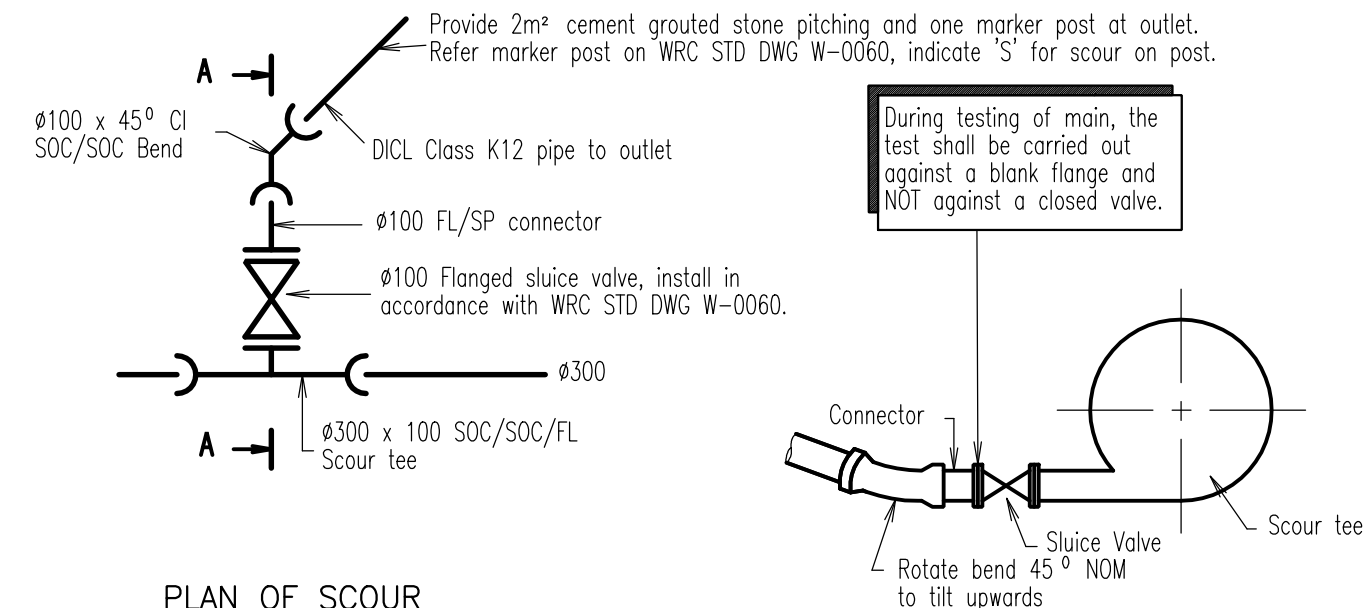
ELEVATION
SCOUR DETAIL AT ACCESS CHAMBER



SCOUR DETAIL AT CREEK CROSSINGS
Not To Scale

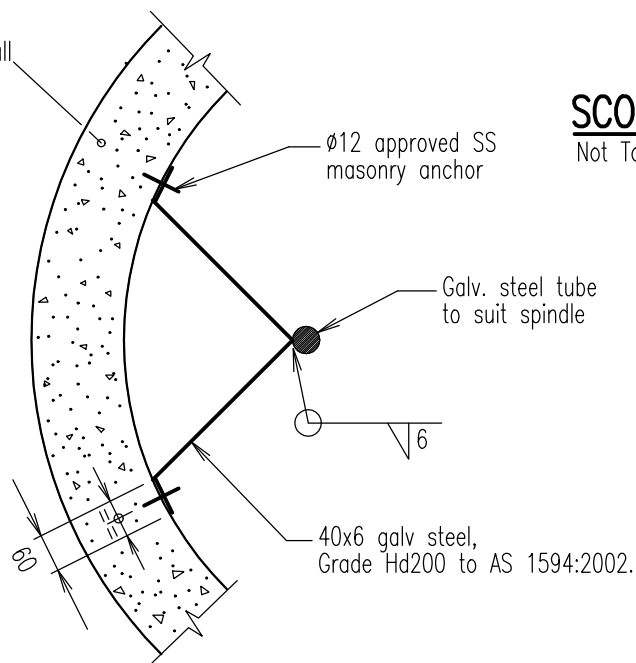


SCOUR PROTECTION DETAIL - CREEK CROSSINGS
Not To Scale



SCOUR DETAIL

SECTIONAL ELEVATION
OF SCOUR TEE AT A-A



SECTION B-B
BRACKET DETAIL

NOTES:

1. Refer WRC STD DWGS S-0020 and S-0025 for details of access chambers and covers.
2. Where foundation bearing pressure is less than 50kPa, excavate and replace unsatisfactory material with compacted CBR15 material to the depth ordered by the Superintendent.
3. Concrete N20 in accordance with AS 1379:2007 and AS 3600:2009.
4. All steelwork hot dip galvanized after fabrication to AS/NZS 4680:2006.
5. All welds to AS/NZS 1554:2014. All welding symbols to AS 1101.3:2005.
6. The location of the scour valve and extent of scour discharge pipe are indicated on project drawings.
7. All dimensions in millimetres.

REVISIONS	DATE
C GENERAL UPDATES AND STANDARD REFERENCING AMENDMENTS	27/4/16
B GENERAL UPDATES	9/4/12
A ORIGINAL ISSUE	1/3/97



Email: info@whitsundayrc.qld.gov.au Web: www.whitsundayrc.qld.gov.au

BOWEN
67 Herbert St
Bowen 4805 Q
Ph 07 4761 3600

COLLINSVILLE
Cnr Stanley & Conway Sts
Collinsville 4804 Q
Ph 07 4785 5366

PROSERPINE
83-85 Main St
Proserpine 4800 Q
Ph 07 4945 0200

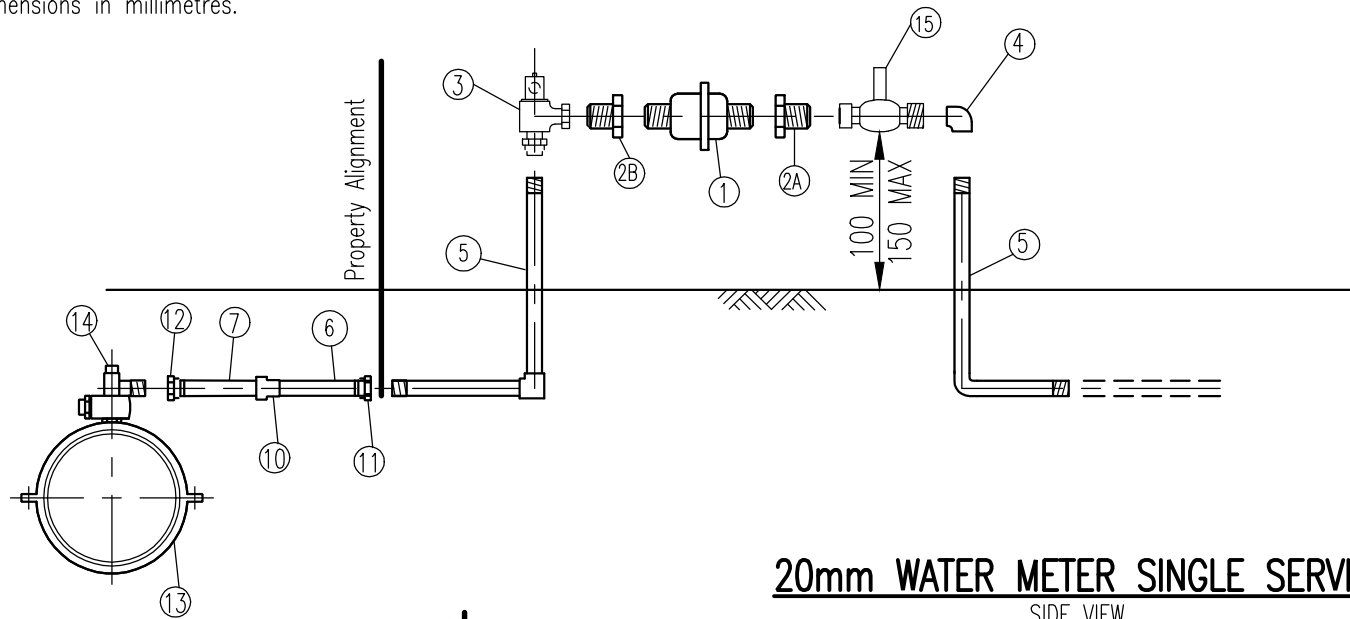
SCOUR DETAILS

WATER Standard Drawing W-0080

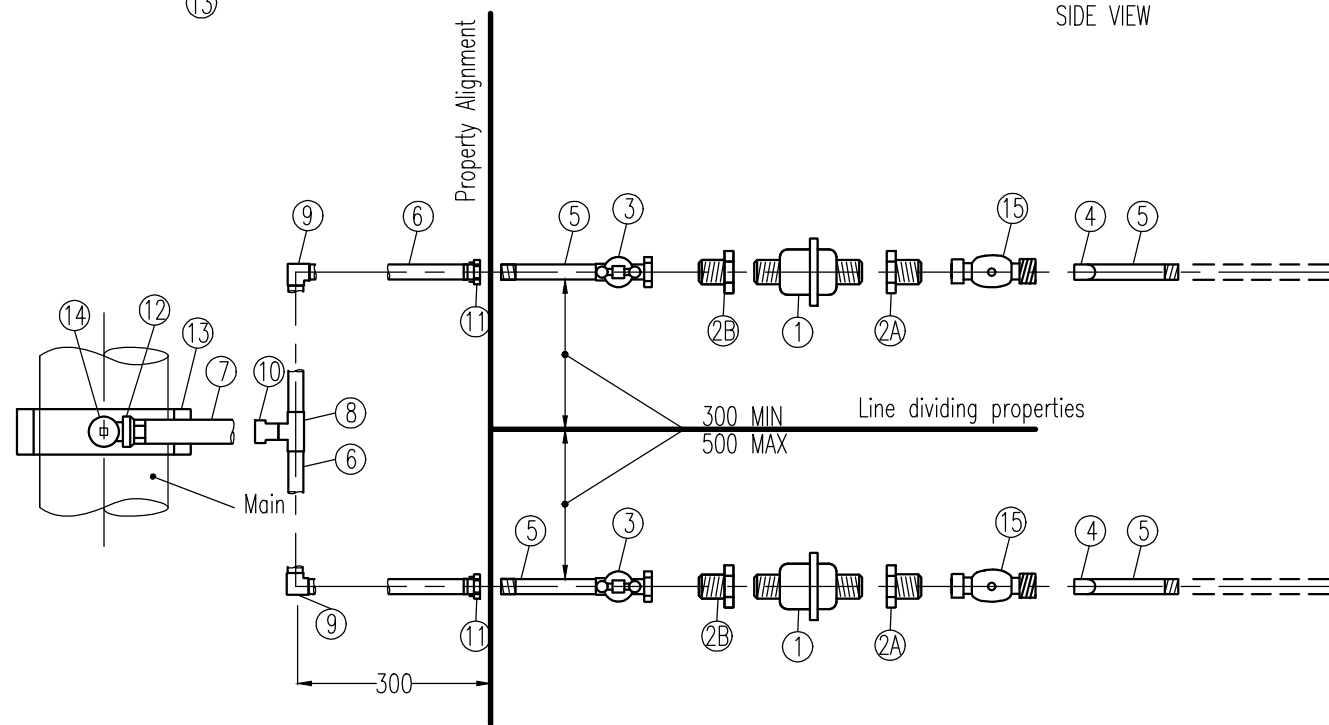
A	B	C
---	---	---

NOTES:

1. Polythene pipe and connectors:
 - (a) All polythene pipe shall be MDPE Class 12 in accordance with AS 4130:2009
 - (b) All mechanical joint fittings shall be in accordance with AS 4129:2008.
2. Cross road services shall be located 500mm downhill from dividing allotments so as not to conflict with electrical supply authority poles.
3. Service pipes to lots other than a single dwelling shall have the service connection pipes upgraded to suit the use. These sizes should be sized to comply with AS3500.1:2003.
4. All dimensions in millimetres.

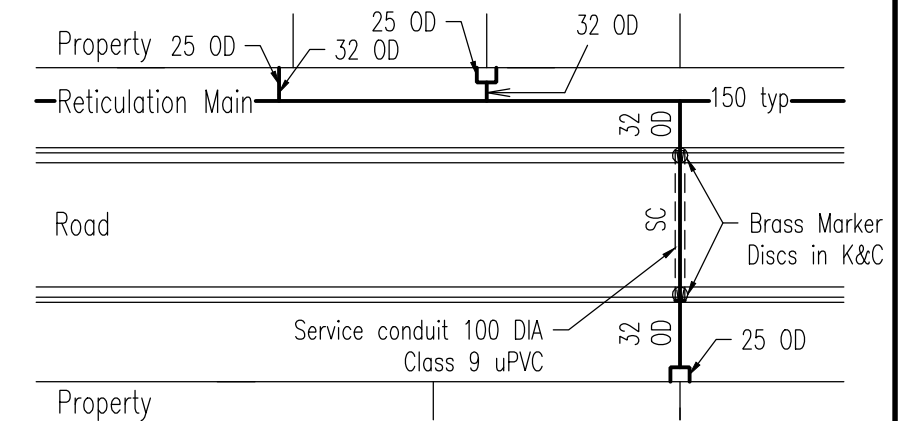


20mm WATER METER SINGLE SERVICE
SIDE VIEW



20mm WATER METER 2 LOT SERVICE
PLAN VIEW

MARK NO	DESCRIPTION
1.	Water Meter. Complete with Backflow to comply with AS 2845.1:2010
2A.	Meter tail piece with BSP-MI end, supplied with meter
2B.	As above except pre-drilled to suit wire seal.
3.	Rt. angled ball valve F-F
4.	Std'nless Steel FL Elbow
5.	316 stainless steel pipe (20 NB) pre-bent fixed length pipe to be purchased from council.
6.	Polyethylene 25 OD Class 12
7.	Polyethylene 32 OD Class 12
8.	Poly 25 tee fitting
9.	Poly 25 elbow fitting
10.	Poly reducing fitting 32-25
11.	25 FI-Poly end connector
12.	32 FI-Poly end connector
13.	Gunmetal tapping brand or Ready Tap Connection
14.	25x32 OD Poly TPR bonnet poly ferrule stop cock
15.	House hold isolating valve FM Ball



TYPICAL MAIN CONNECTIONS
PLAN VIEW

REVISIONS	DATE
F GENERAL UPDATES AND STANDARD REFERENCING AMENDMENTS	27/4/16
E GENERAL UPDATES	9/4/12
D FITTINGS AND DETAILS AMENDED	9/8/10
C MINOR AMENDMENTS	11/7/07
B MINOR AMENDMENTS	10/3/98
A ORIGINAL ISSUE	1/3/97



Email: info@whitsundayrc.qld.gov.au Web: www.whitsundayrc.qld.gov.au

BOWEN
67 Herbert St
Bowen 4805 Q
Ph 07 4761 3600

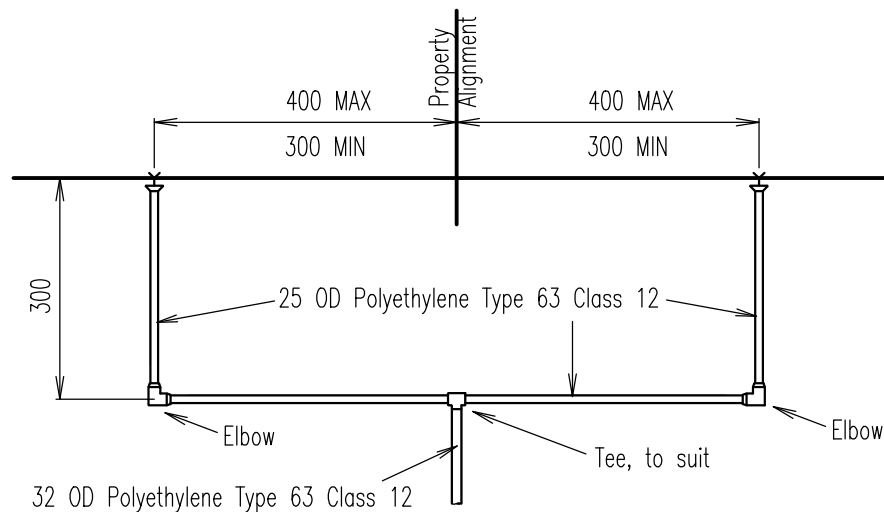
COLLINSVILLE
Cnr Stanley & Conway Sts
Collinsville 4804 Q
Ph 07 4785 5366

PROSERPINE
83-85 Main St
Proserpine 4800 Q
Ph 07 4945 0200

**WATER CONNECTIONS
SINGLE AND DOUBLE
ABOVE GROUND METER**

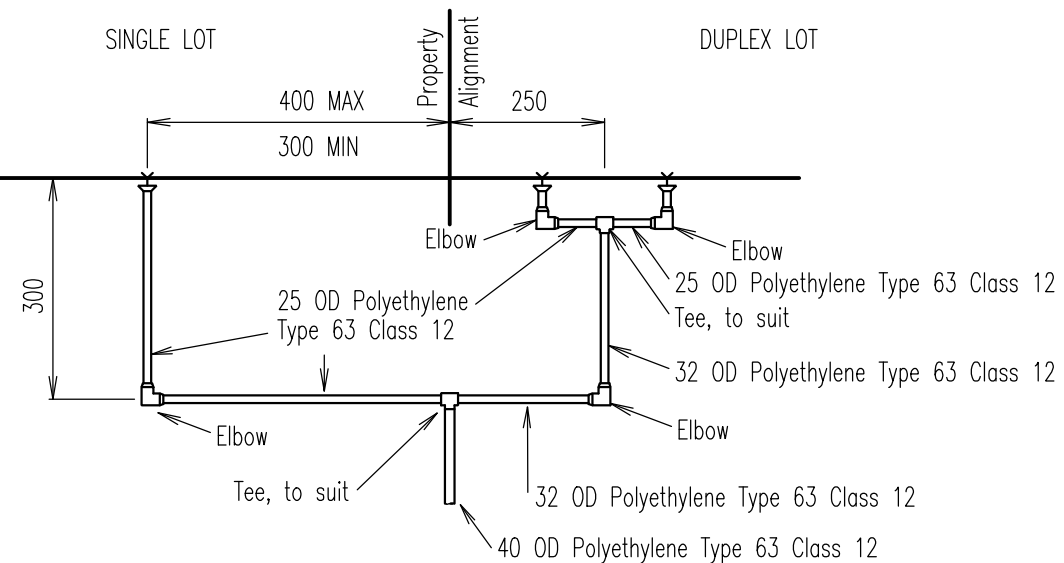
**WATER
Standard
Drawing
W-0090**

B C D E F



**20mm MULTIPLE SERVICES
DETAIL AT PROPERTY LINE**

Blue line poly, Class 16 pipe



**ALTERNATIVE 1
25mm DUPLEX & MULTIPLE SERVICES
DETAIL AT PROPERTY LINE**

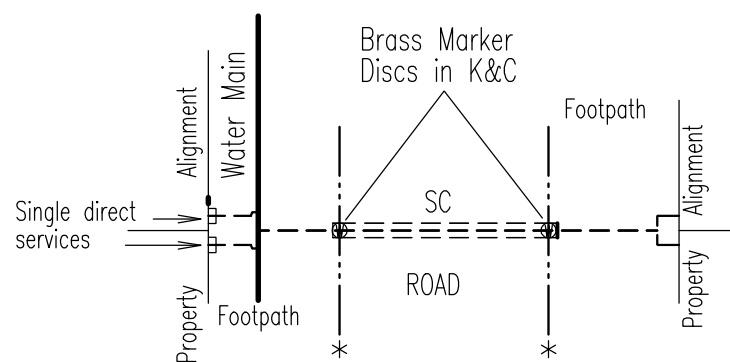
Blue line poly, Class 16 pipe

NOTES:

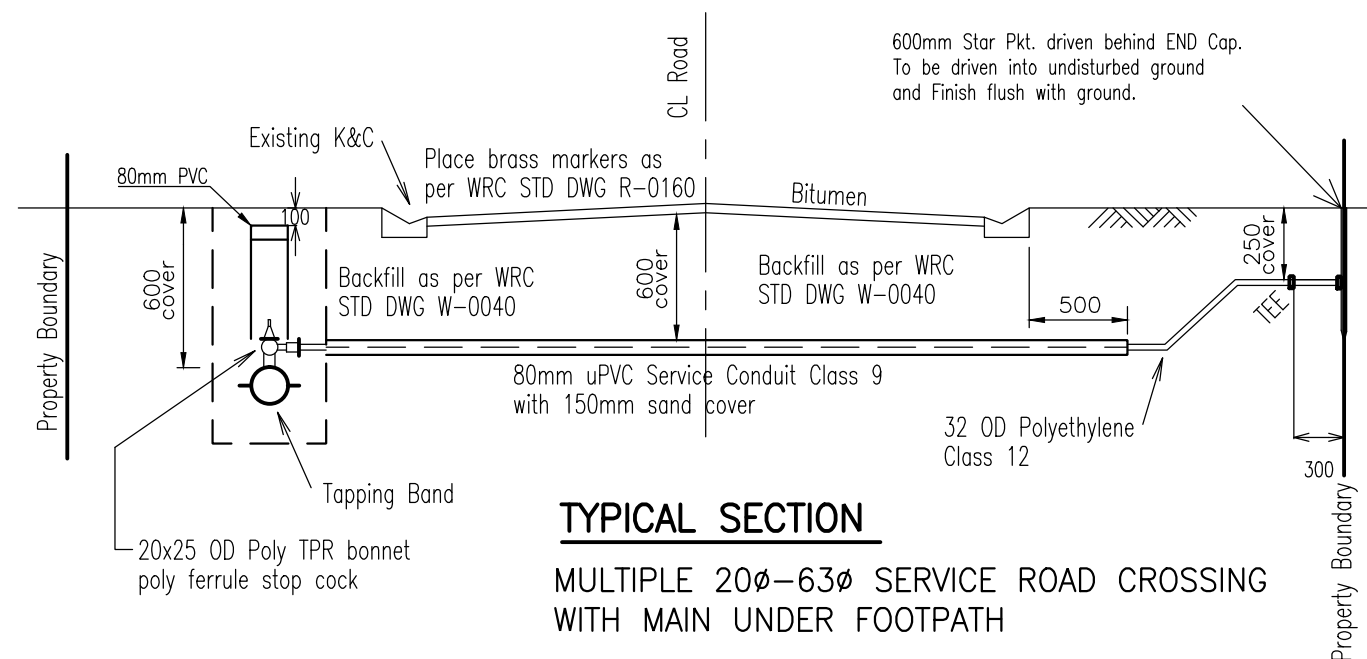
- Underground Meter Box on approval only.
- The section of main at the proposed tapping point must be first cleaned and wrapped with a minimum of two layers of self-adhesive polyvinylchloride wrapping.
- A 20mm meter is to be installed on all services, unless otherwise specified on the project drawings.
- All pipes & fittings as per WRC STD DWG W-0090
- Single 20mm service road crossing refer to WRC STD DWG W-0042.
- All dimensions in millimetres.
- All services must cross the road at right angles.
- Ferrule stop cock access tube and cap must not have any barring pressure on the ferrule cock and pipe leading away.

LEGEND

- * NOM. kerb line
- SC Service conduit. 80mm Class 9 uPVC



SERVICES LAYOUT



TYPICAL SECTION

MULTIPLE 20 ϕ -63 ϕ SERVICE ROAD CROSSING WITH MAIN UNDER FOOTPATH

REVISIONS	DATE
D GENERAL UPDATES AND STANDARD REFERENCING AMENDMENTS	27/4/16
C GENERAL UPDATES	9/4/12
B DUPLEX SERVICES ADDED	15/5/09
A ORIGINAL ISSUE	11/7/07



Email: info@whitsundayrc.qld.gov.au Web: www.whitsundayrc.qld.gov.au

BOWEN
67 Herbert St
Bowen 4805 Q
Ph 07 4761 3600

COLLINSVILLE
Cnr Stanley & Conway Sts
Collinsville 4804 Q
Ph 07 4785 5366

PROSERPINE
83-85 Main St
Proserpine 4800 Q
Ph 07 4945 0200

**WATER CONNECTIONS SINGLE
AND DOUBLE ABOVE
GROUND METER ALTERNATIVES**

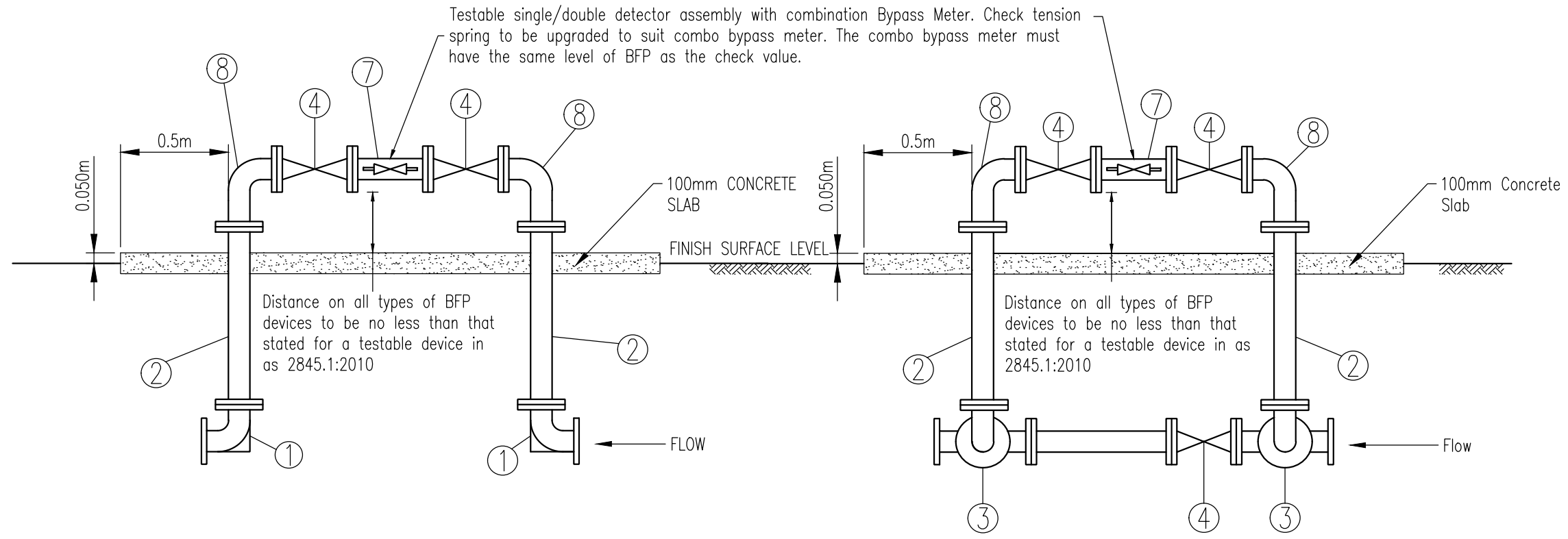
**WATER
Standard
Drawing
W-0092**

A B C D

NOTES:

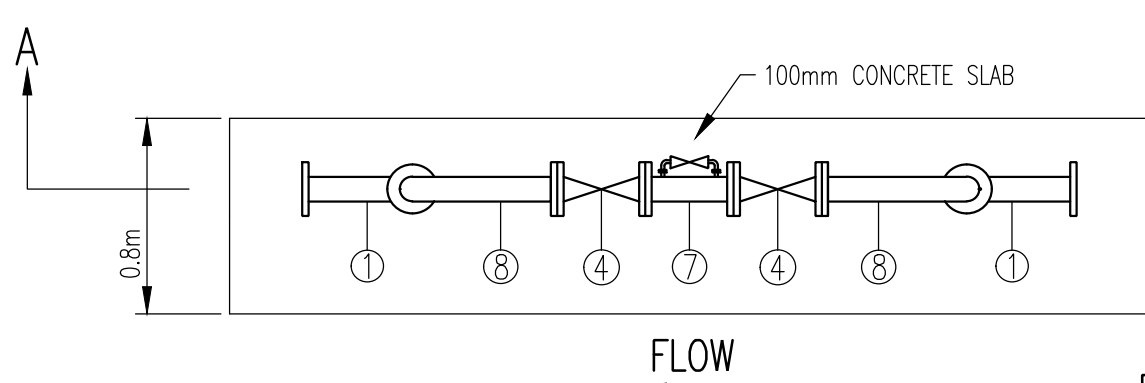
1. Flanged DICL pipe to suit or as otherwise noted.
2. Combination Bypass Meter (Size of meters to be determined for use.). Refer to AS/NZS 3500.1:2003.
3. Bypass Meter must be able to be isolated independently to rest of service.
4. The Isolating Valves must be able to be locked in open position.
5. Council's preferred supplier to BFP devices are TYCO flow control.
6. Check valve for low hazard application shall be used. Isolating valves shall either be gear operated butterfly valves for fire services or resilient sluice valves to suit fire services
7. All works are to comply with AS 3500.1:2003, water supply
 - (a) AS 24.1:2005, fire hydrant installation
 - (b) AS 2845.1:2010, back flow prevention devices
 - (c) Materials, design and performance requirements. Council policy, sewerage water
 - (d) Supply act.
8. Sizing to be indicated on plans as required.
9. Class of pipe
 - (a) mPVC class 16 series 2 (Diod compatible)
 - (b) DI PN20

Testable single/double detector assembly with combination Bypass Meter. Check tension spring to be upgraded to suit combo bypass meter. The combo bypass meter must have the same level of BFP as the check value.

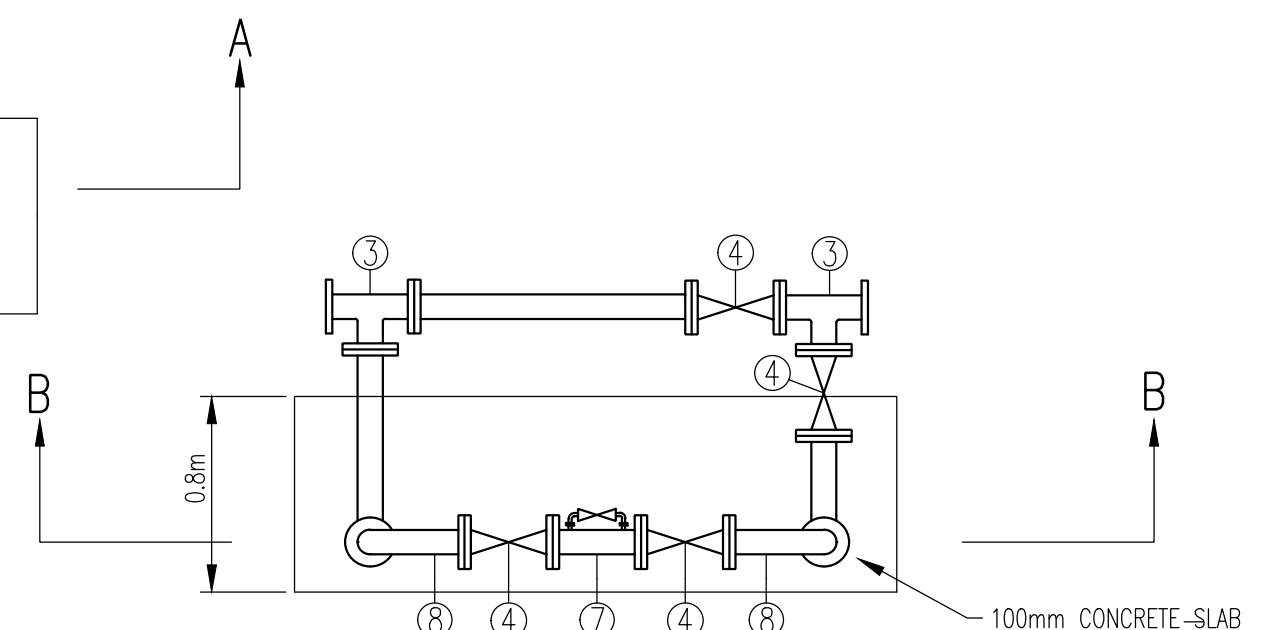


SECTION A-A

SECTION B-B



PLAN WITHOUT BYPASS



PLAN WITH BYPASS

FITTING LIST	
①	Duckfoot bend FL-FL
②	FL-FL DICL K16 pipe-length to suit.
③	FL-FL-FL Tee
④	FL-FL Sluice Valve
⑦	Testable (Single/Double) check detector assembly with combination bypass meter (Size of meters to be determined by applicant). Refer to AS/NZS 3500.1:2003
⑧	FL-FL 90° Bend

REVISIONS	DATE
D	GENERAL UPDATES AND STANDARD REFERENCING AMENDMENTS 27/4/16
C	GENERAL UPDATES 9/4/12
B	MINOR CHANGES TO ELEVATION DETAIL 03/10
A	ORIGINAL ISSUE 06/09



Email: info@whitsundayrc.qld.gov.au Web: www.whitsundayrc.qld.gov.au

BOWEN
67 Herbert St
Bowen 4805 Q
Ph 07 4761 3600

COLLINSVILLE
Cnr Stanley & Conway Sts
Collinsville 4804 Q
Ph 07 4785 5366

PROSERPINE
83-85 Main St
Proserpine 4800 Q
Ph 07 4945 0200

**WATER TRUNK MAIN COMBINED
FIRE MAIN AND DOMESTIC SUPPLY
WITH AND WITHOUT A BYPASS**

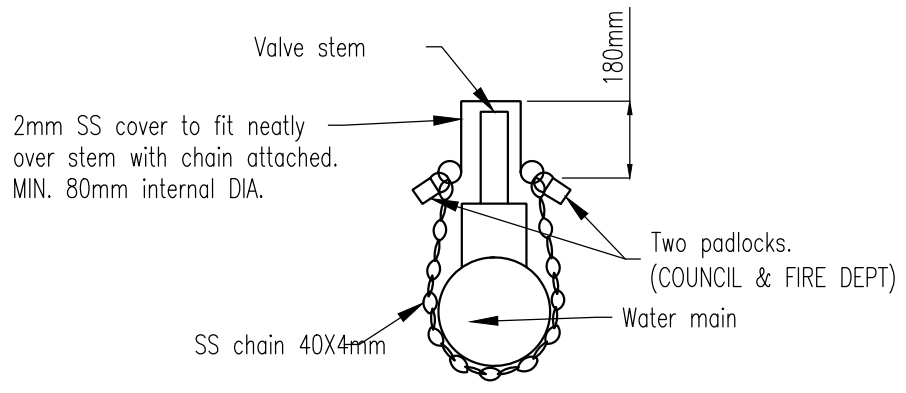
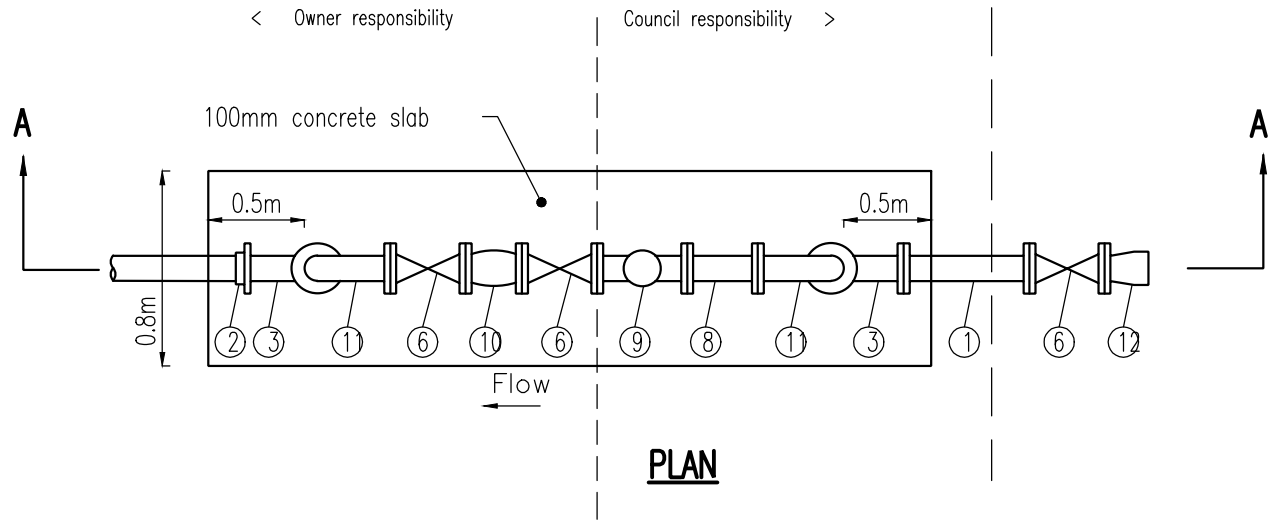
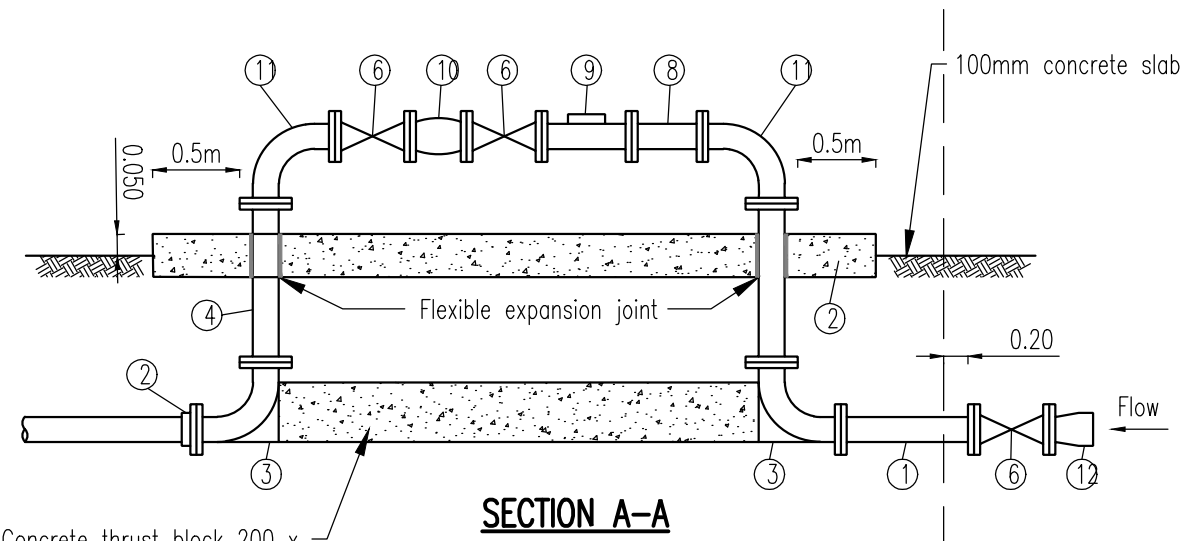
**WATER
Standard
Drawing
W-0093**

A	B	C	D
---	---	---	---

NOTES:

1. Flanged DICL pipe to suit or as otherwise noted.
2. Combination Bypass Meter (Size of meters to be determined for use). refer to AS/NZS 3500.1:2003.
3. The Isolating Valves must be able to be locked in open position.
4. Council's preferred supplier to BFP devices are TYCO flow control.
5. Check valve for low hazard application shall be used. Isolating valves shall either be gear operated butterfly valves for fire services or resilient sluice valves to suit fire services.
6. All works are to comply with as 3500 water supply
 - (a) AS 2419-1, fire hydrant installation
 - (b) AS 2845-1, back flow prevention devices
 - (c) Materials, design and performance requirements. council policy, sewerage and water.
 - (d) Supply act.
7. Sizing to be indicated on plans as required
8. Class of pipe
 - (a) mPVC class 16 series 2 (DIOD compatible)
 - (b) DI PN20

FITTING LIST	
①	DI FL-FL Pipe length 800mm
②	DI SP-FL Connector
③	Duckfoot bend FL-FL
④	FL-FL DICL K16 Pipe-length to suit
⑤	FL-FL-FL Tee
⑥	FL-FL Sluice Valve.
⑧	Flanged DICL Length = 5X ϕ of pipe
⑨	Combo meter
⑩	FL-FL BFP Device to suit the use
⑪	FL-FL 90° Bend
⑫	DI SO-FL Connection



REVISIONS	DATE
D GENERAL UPDATES AND STANDARD REFERENCING AMENDMENTS	27/4/16
C GENERAL UPDATES	10/4/12
B MINOR CHANGES TO ELEVATION DETAIL	06/09
A ORIGINAL ISSUE	07/08



Email: info@whitsundayrc.qld.gov.au Web: www.whitsundayrc.qld.gov.au

BOWEN
67 Herbert St
Bowen 4805 Q
Ph 07 4761 3600

COLLINSVILLE
Cnr Stanley & Conway Sts
Collinsville 4804 Q
Ph 07 4785 5366

PROSERPINE
83-85 Main St
Proserpine 4800 Q
Ph 07 4945 0200

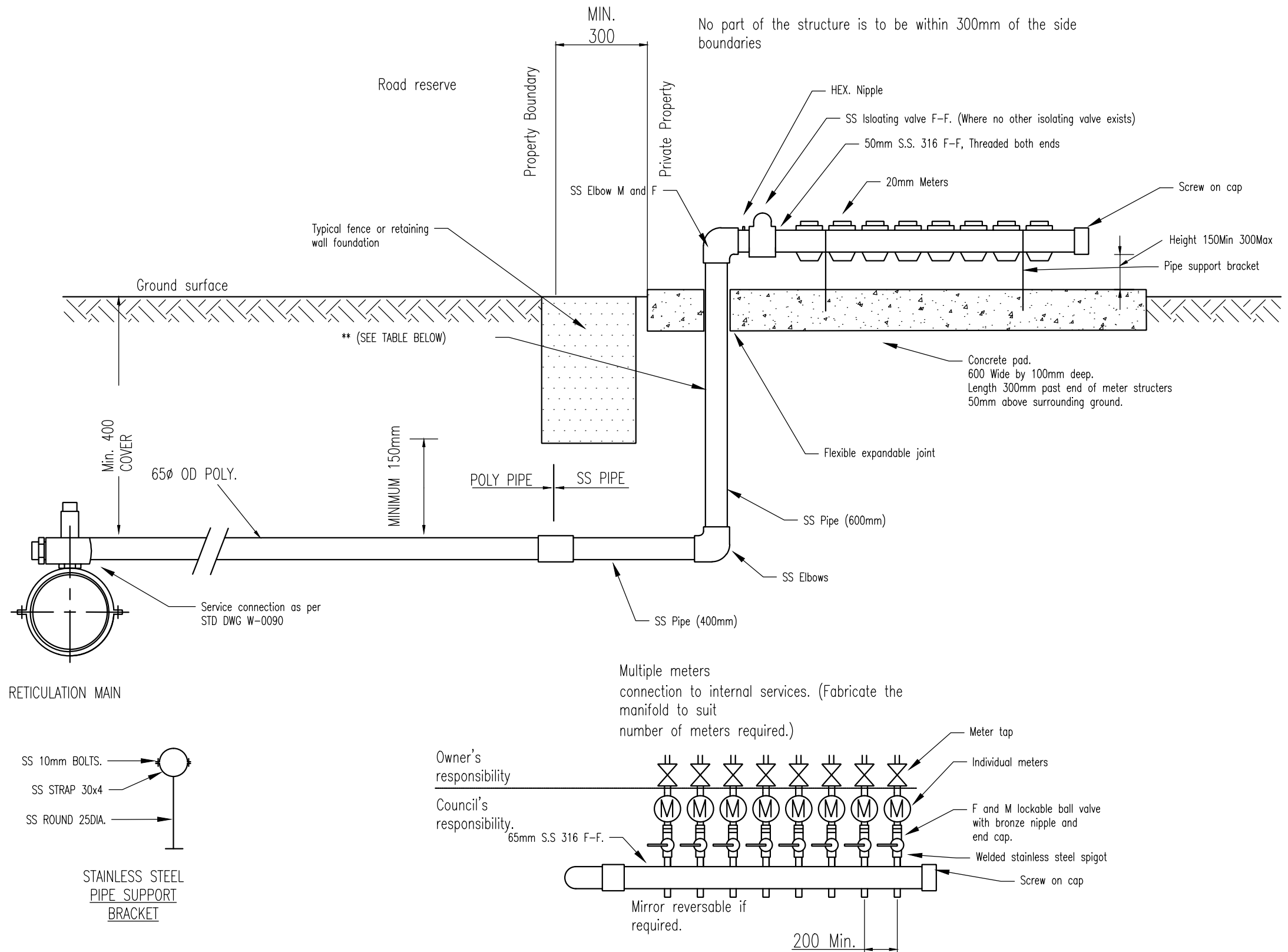
**INDUSTRIAL WATER METERING
COMBINED FIRE MAIN AND DOMESTIC
SUPPLY 80mm OR GREATER**

**WATER
Standard
Drawing
W-0094**

A B C D

NOTES:

1. A maximum of 10 meters may be connected to any particular manifold before a sub meter is required.
2. The minimum meter size is 20mm, but each installation must be individually sized to suit the usage proposed.
3. Each installation is to be sized to suit the installation proposed by a hydro engineer.
4. The location of the manifold is to be approved by the council in writing before installation.
5. Council may require an approved vehicle proof buffer placed 500mm clear on any side exposed to vehicular traffic.
6. Each offtake is to be clearly engraved with the number of the unit to be served by that meter.
7. Any proposed manifold is to be designed and submitted to council for approval prior to any construction being carried out and no work is to start until council's written approval is received.
8. Meters must be able to be read from the road reserve and if a fence is constructed, an appropriate gate system is to be provided to allow unhindered access by the meter reader.



REVISIONS	DATE
E GENERAL UPDATES AND STANDARD REFERENCING AMENDMENTS	27/4/16
D GENERAL UPDATES	11/4/12
C EXTRA DETAILS ADDED	06/09
B EXTRA DETAILS ADDED	09/08
A ORIGINAL ISSUE	07/08



Email: info@whitsundayrc.qld.gov.au Web: www.whitsundayrc.qld.gov.au

BOWEN
67 Herbert St
Bowen 4805 Q
Ph 07 4761 3600

COLLINSVILLE
Cnr Stanley & Conway Sts
Collinsville 4804 Q
Ph 07 4785 5366

PROSERPINE
83-85 Main St
Proserpine 4800 Q
Ph 07 4945 0200

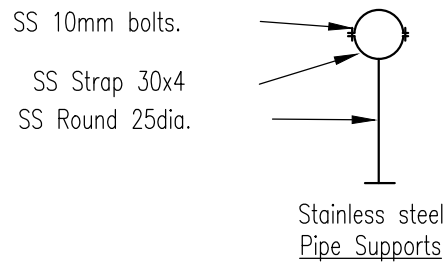
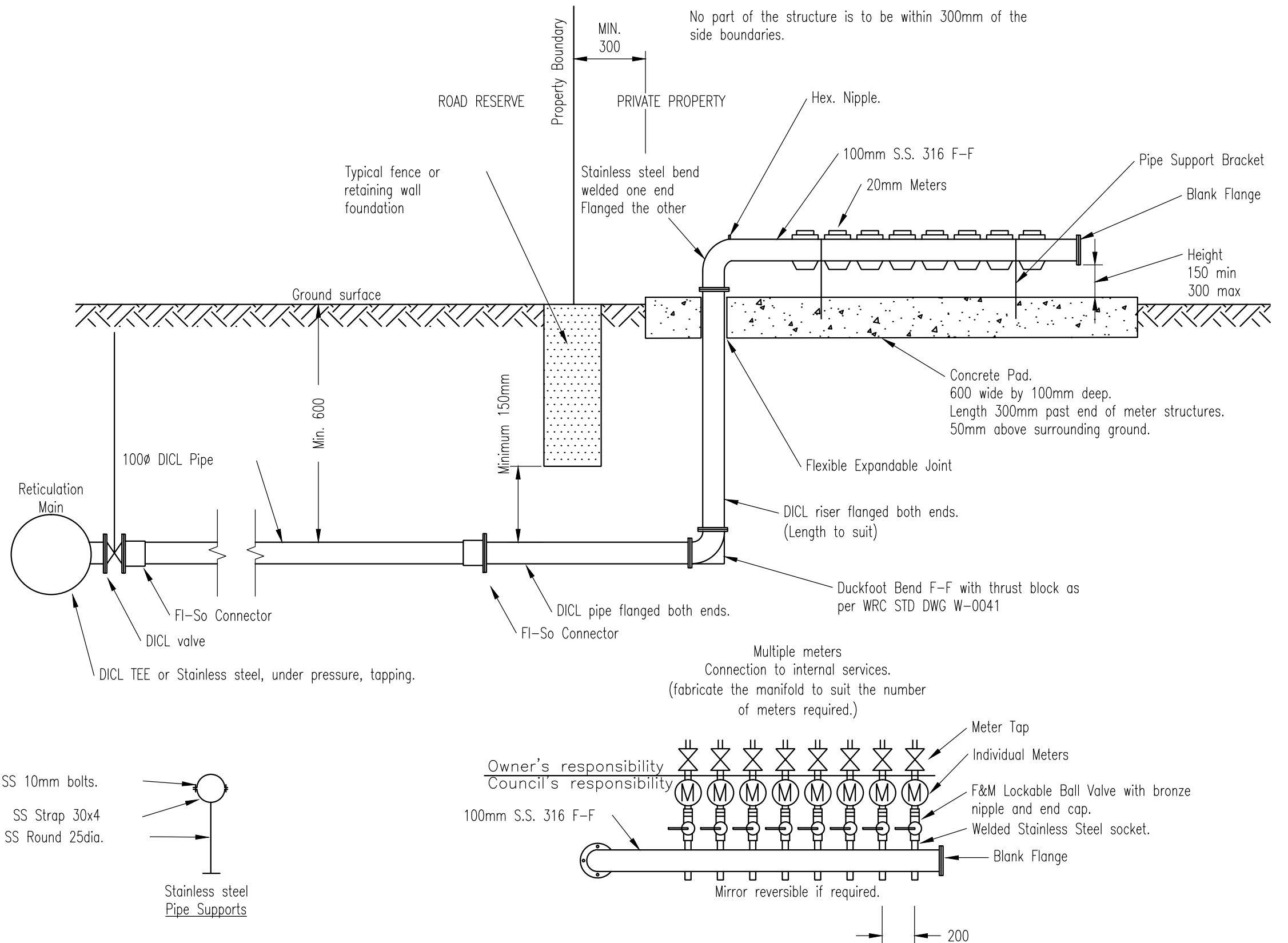
**WATER SERVICE METERS MULTIPLE
OFF-TAKE MANIFOLDS 50mmø
INPUT SUPPLY**

**WATER
Standard
Drawing
W-0095**

A B C D E

NOTES:

1. A maximum of 20 meters may be connected to any particular manifold before a sub meter is required.
2. The minimum meter size is 20mm, but each installation must be individually sized to suit the usage proposed.
3. Each installation is to be sized to suit the installation proposed by a Hyrdo Engineer.
4. The location of the manifold is to be approved by the Council in writing before installation.
5. Council may require an approved vehicle proof buffer placed 500mm clear on any side exposed to vehicular traffic.
6. Each offtake is to be clearly engraved with the number of the unit to be served by that meter.
7. Any proposed manifold is to be designed and submitted to Council for approval prior to any construction being carried out and no work is to start until Council's written approval is received.
8. Meters must be able to be read from the road reserve and if a fence is constructed, an appropriate gate system is to be provided to allow unhindered access by the meter reader.



REVISIONS	DATE
D GENERAL UPDATES AND STANDARD REFERENCING AMENDMENTS	27/4/16
C GENERAL UPDATES	11/4/12
B EXTRA DETAILS ADDED	06/09
A ORIGINAL ISSUE	07/08



Email: info@whitsundayrc.qld.gov.au Web: www.whitsundayrc.qld.gov.au

BOWEN
67 Herbert St
Bowen 4805 Q
Ph 07 4761 3600

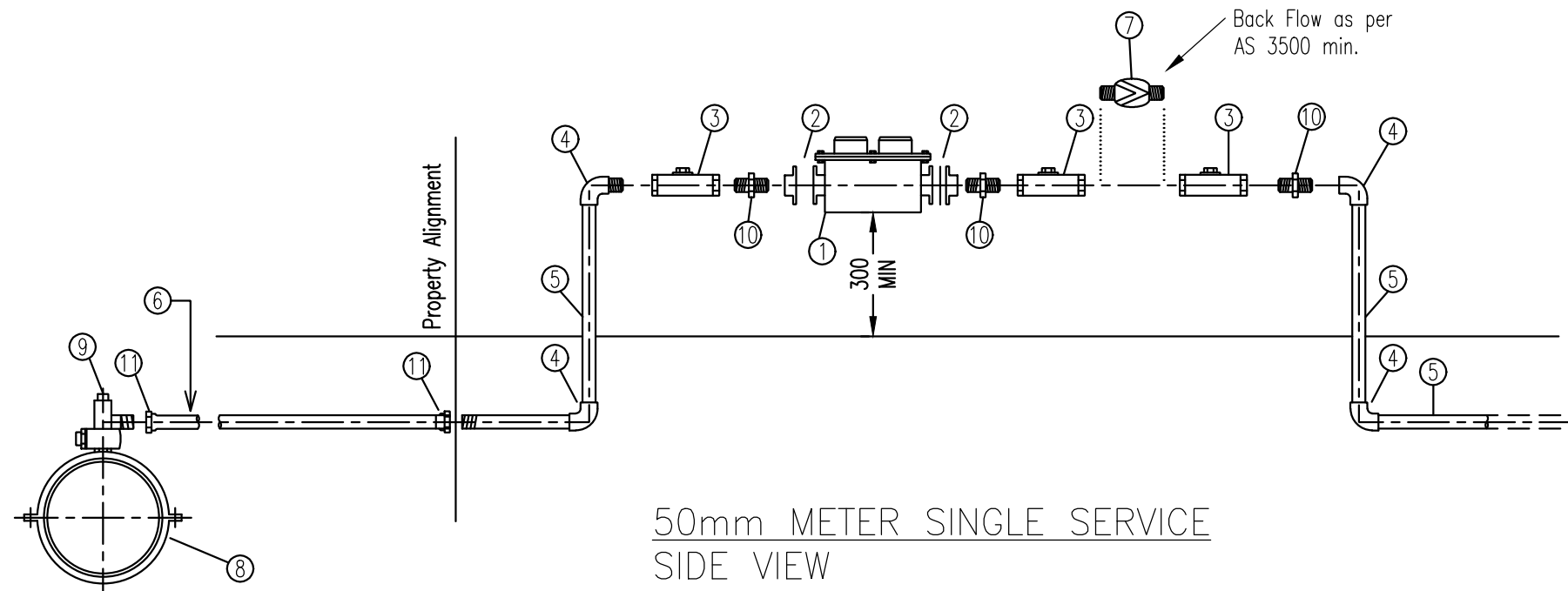
COLLINSVILLE
Cnr Stanley & Conway Sts
Collinsville 4804 Q
Ph 07 4785 5366

PROSERPINE
83-85 Main St
Proserpine 4800 Q
Ph 07 4945 0200

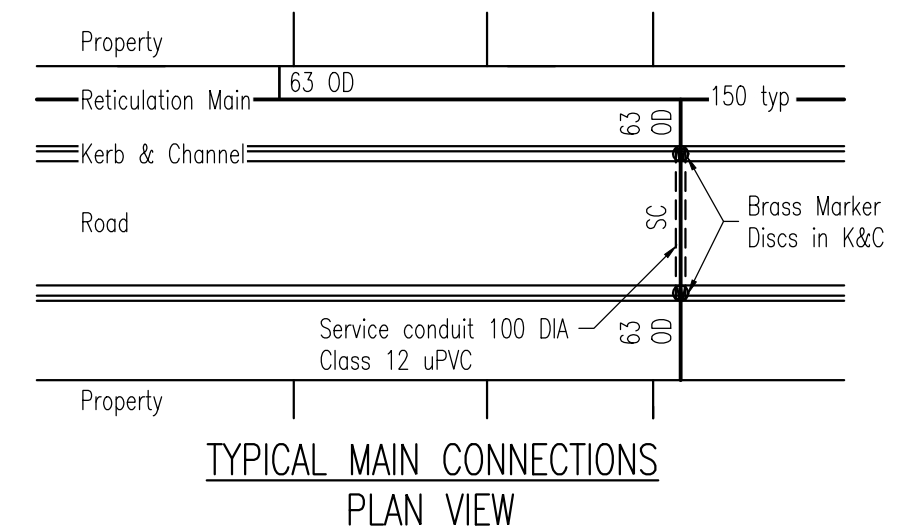
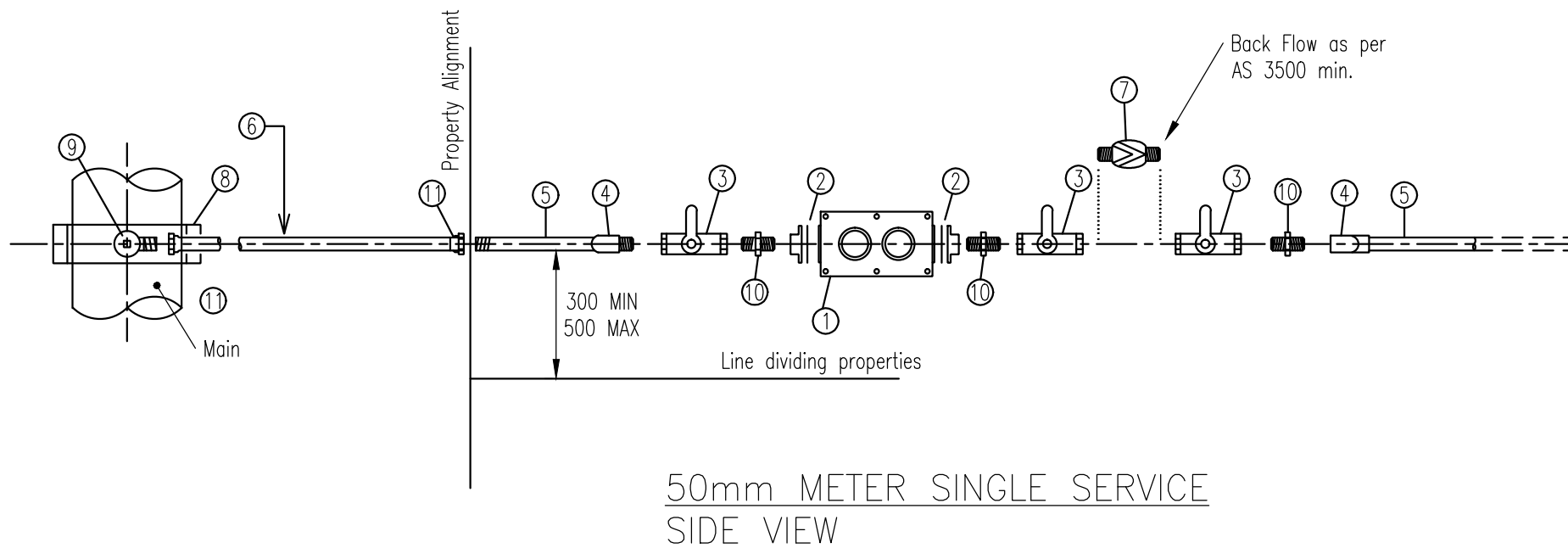
**WATER SERVICE METERS
MULTIPLE OFF-TAKE MANIFOLDS
WITH 100mmØ INPUT SUPPLY.**

**WATER
Standard
Drawing
W-0096**

A B C D



MARK NO.	DESCRIPTION
①	Water Meter. 50mm Combo Meter with flange adaptor purchased from council
②	Flange adaptor purchased from Council
③	S/Steel quarter turn ball valve F-F
④	Stainless Steel Elbow
⑤	316 Stainless Steel 50 NB fixed length pipe to be purchased from Council
⑥	Polyethylene 63 OD Class 12
⑦	Approved back flow prevention device to suit specific internal hazard, as per AS 3500
⑧	Gunmetal tapping band or Ready Tap Connection
⑨	50x63mm OD Poly TPR bonnet poly ferrule stop cock
⑩	50mm stainless steel nipple adaptor
⑪	Fl-Poly end connector



NOTES:

- Polythene pipe and connectors:
 - All polythene pipe shall be MDPE Class 12 in accordance with AS 4130 (interim) - 1993
 - All mechanical joint fittings shall be in accordance with AS 4129:2008.
- Cross road services shall be located 500mm downhill from dividing allotments so as not to conflict with electrical supply authority poles.
- Service pipes to lots other than a single dwelling shall have the service connection pipes upgraded to suit the use. These sizes should be sized to comply with AS3500
- All dimensions in millimetres.

REVISIONS	DATE
C GENERAL UPDATES AND STANDARD REFERENCING AMENDMENTS	27/4/16
B GENERAL UPDATES	11/4/12
A ORIGINAL ISSUE	08/10



Email: info@whitsundayrc.qld.gov.au Web: www.whitsundayrc.qld.gov.au

BOWEN
67 Herbert St
Bowen 4805 Q
Ph 07 4761 3600

COLLINSVILLE
Cnr Stanley & Conway Sts
Collinsville 4804 Q
Ph 07 4785 5366

PROSERPINE
83-85 Main St
Proserpine 4800 Q
Ph 07 4945 0200

**DOMESTIC/COMMERCIAL
SUPPLY 50mm METER**

**WATER
Standard
Drawing
W-0100**

A B C