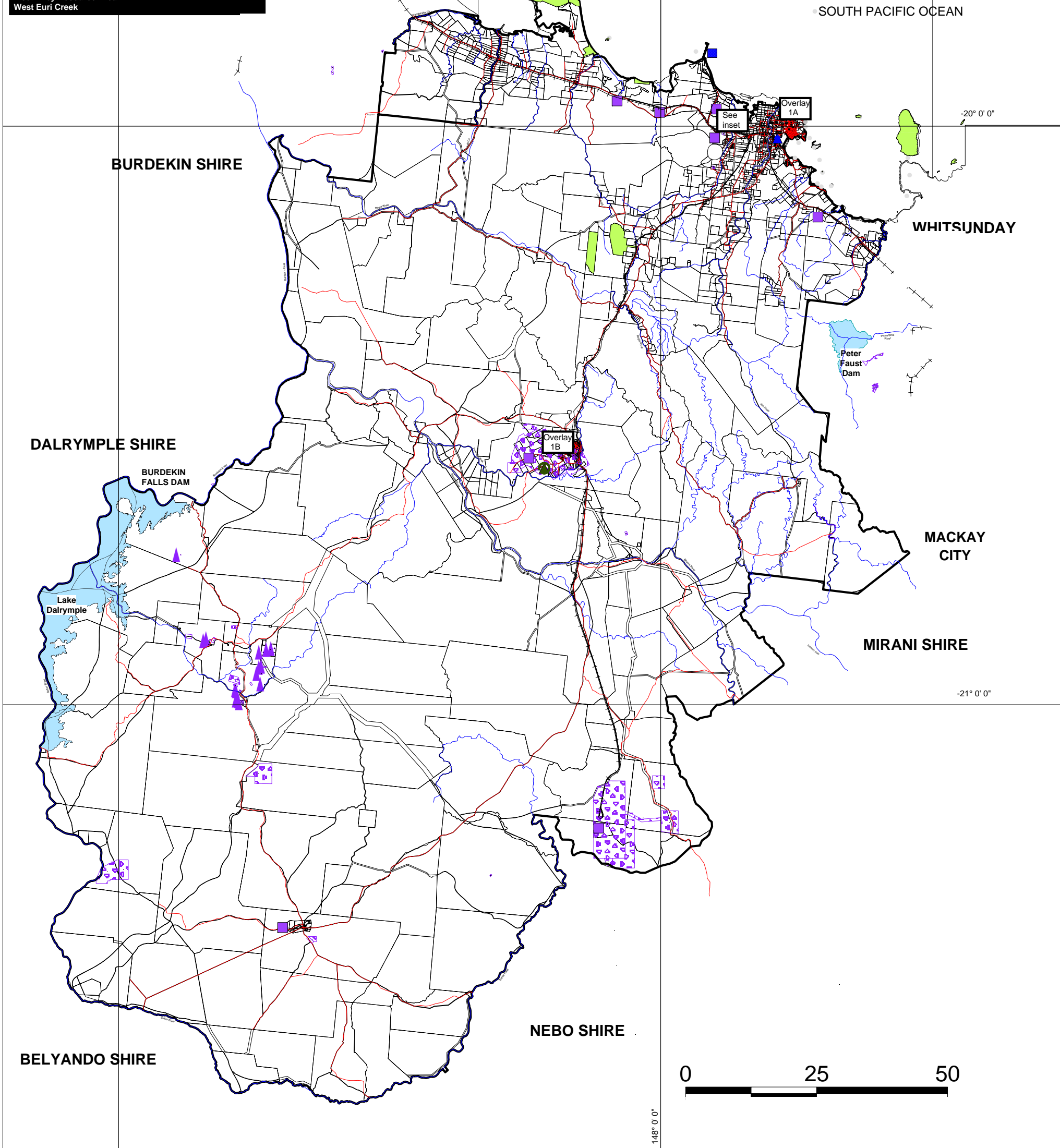
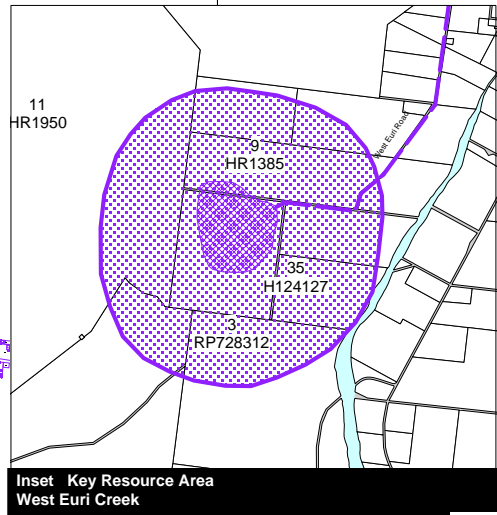
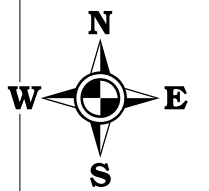


BOWEN SHIRE - OVERLAY MAP 01 NATURAL FEATURES AND RESOURCES OVERLAY - SPECIAL MANAGEMENT AREAS PROTECTED AREAS EXTRACTIVE RESOURCES AVIATION FACILITIES

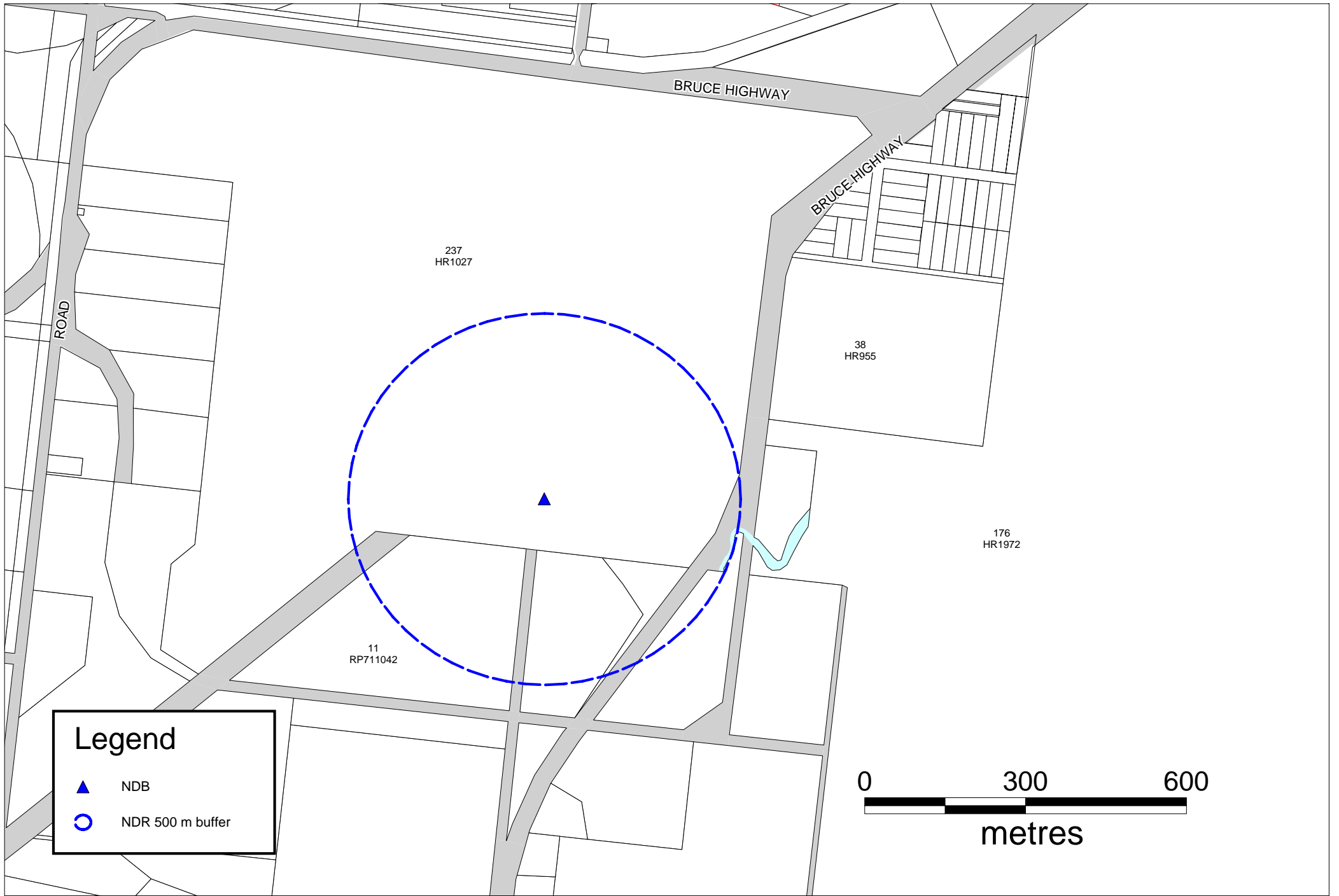


BOWEN SHIRE PLANNING SCHEME

1 June 2006

LEGEND			
	Extractive Resources		Key Resource Area Boundary
	Resource / Processing Area		Transport Route
	Separation Area		Railways
			Protected Areas

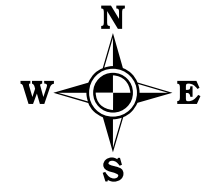
OVERLAY 1A BOWEN AVIATION FACILITY



OVERLAY 1B COLLINSVILLE AVIATION FACILITY



**BOWEN SHIRE - OVERLAY MAP 02
NATURAL FEATURES AND RESOURCES
OVERLAY - SPECIAL MANAGEMENT AREAS
GOOD QUALITY AGRICULTURAL LAND**



SOUTH PACIFIC OCEAN

-20° 0' 0"

-21° 0' 0"

BURDEKIN SHIRE

WHITSUNDAY SHIRE

DALRYMPLE SHIRE

BURDEKIN FALLS DAM

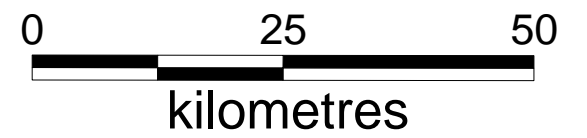
Peter Faust Dam

MACKAY CITY

MIRANI SHIRE

Lake Dalrymple

NEBO SHIRE



BELYANDO SHIRE

147° 0' 0"

148° 0' 0"



1 June 2006

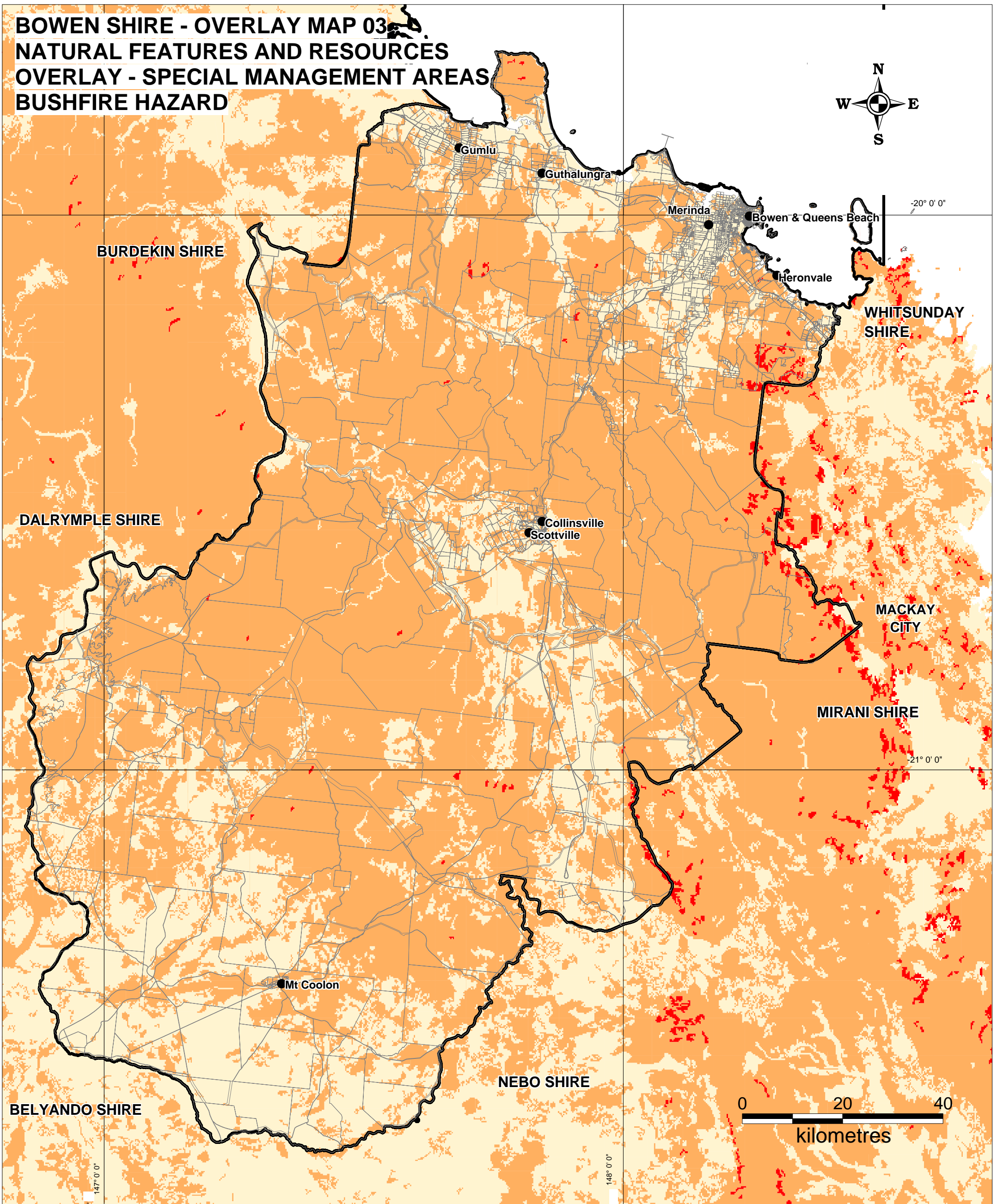
***BOWEN SHIRE
PLANNING
SCHEME***

LEGEND



Good Quality Agricultural Land

**BOWEN SHIRE - OVERLAY MAP 03
NATURAL FEATURES AND RESOURCES
OVERLAY - SPECIAL MANAGEMENT AREAS
BUSHFIRE HAZARD**



LEGEND

- Low Bushfire Hazard
- Medium Bushfire Hazard
- High Bushfire Hazard

"Bushfire Risk Analysis data was supplied by the Rural Fire Service division of Queensland Fire & Rescue Service. This data is to be used as a guide only for planning purposes. While every care is taken to ensure the accuracy of this data, the Department of Emergency Services makes no representations or warranties about its accuracy, reliability, completeness or suitability and disclaims all responsibility and liability"

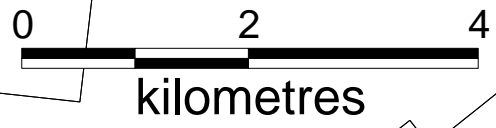
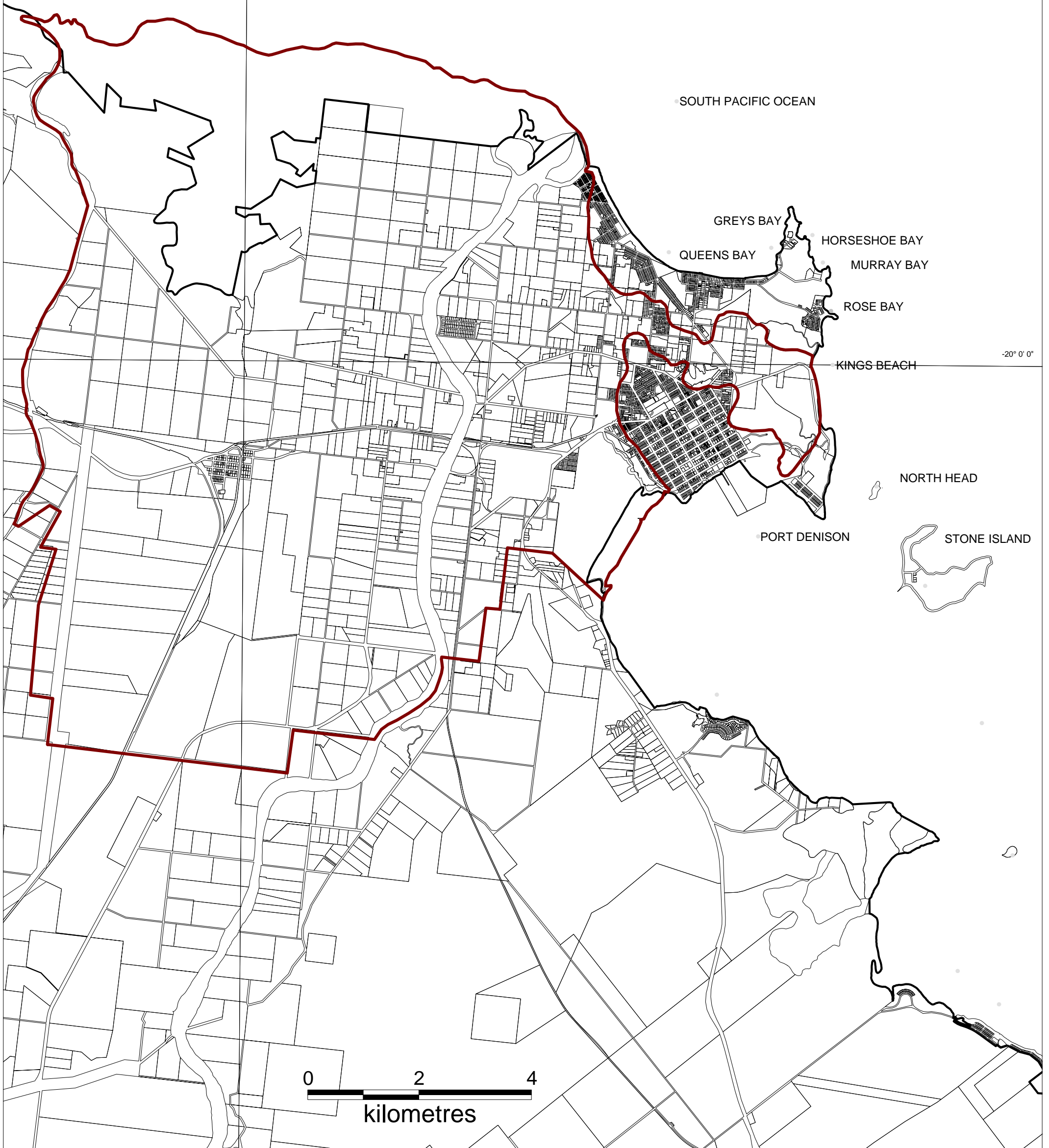


***BOWEN SHIRE
PLANNING SCHEME***

**BOWEN SHIRE - OVERLAY MAP 04
NATURAL FEATURES AND RESOURCES
OVERLAY - SPECIAL MANAGEMENT AREAS
DON RIVER FLOOD PLAIN**



148° 10' 0"

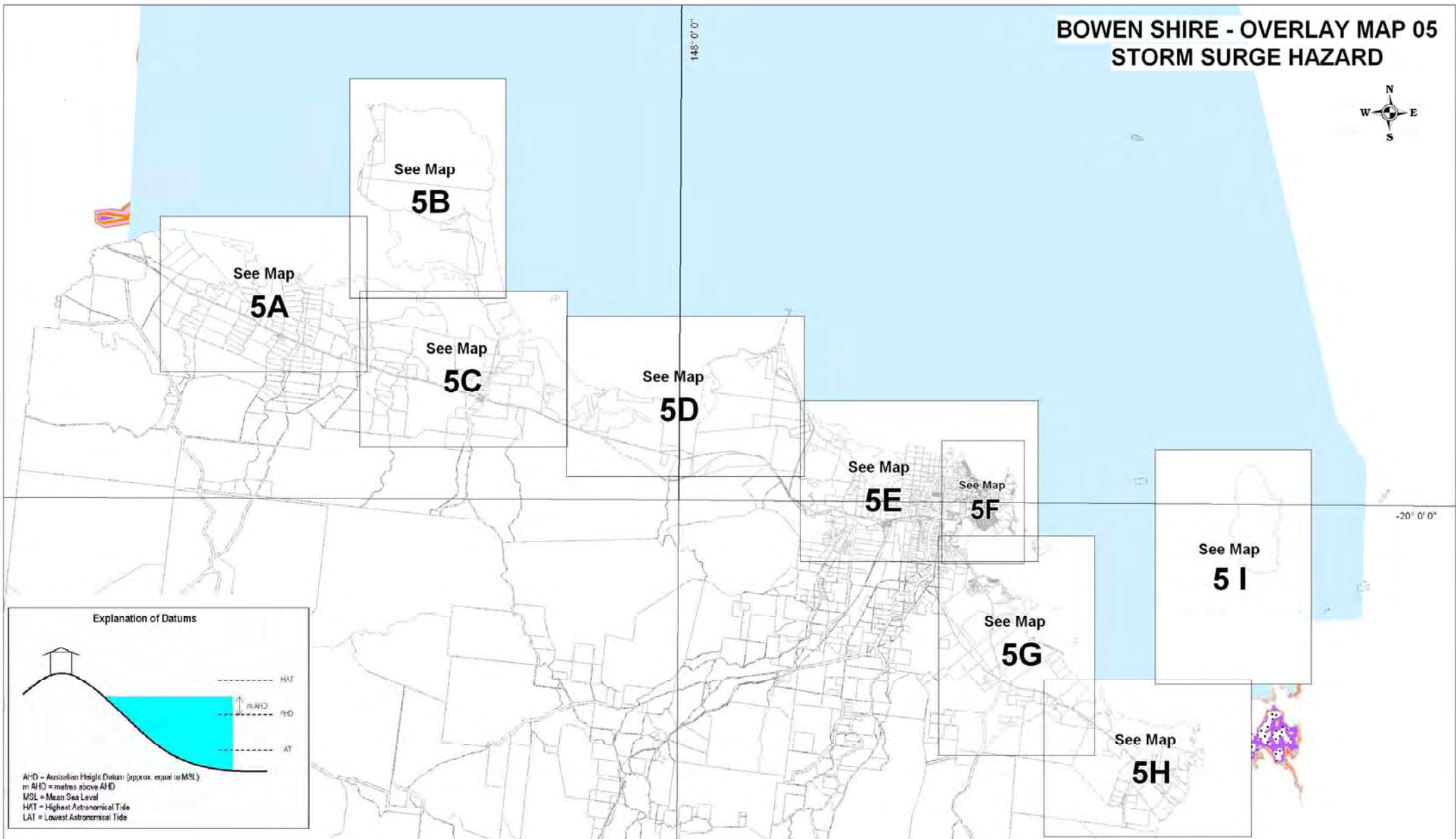


***BOWEN SHIRE
PLANNING
SCHEME***

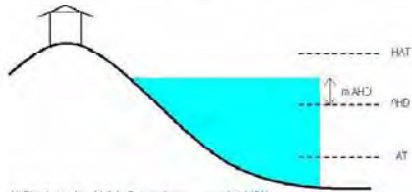
LEGEND

-  Don River Flood Plain Area

BOWEN SHIRE - OVERLAY MAP 05 STORM SURGE HAZARD



Explanation of Datums



AHD = Australian Height Datum (approx. equal to MSL)
 m AHD = metres above AHD
 MSL = Mean Sea Level
 HAT = Highest Astronomical Tide
 LAT = Lowest Astronomical Tide



BOWEN SHIRE PLANNING SCHEME

1 June 2006

LEGEND

National Storm Tide Mapping Zones (m AHD)

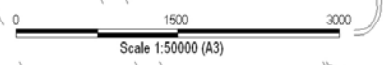
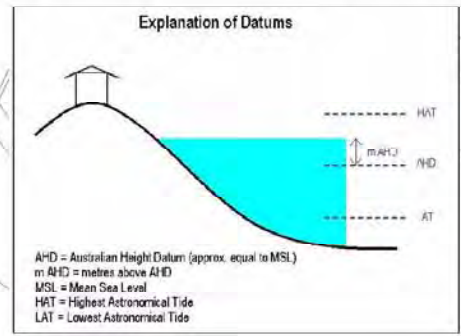
ZONE 1		1.95m to 2.0m A.H.D.	ZONE 4		3.1m to 3.5m A.H.D.
ZONE 2		2.1m to 2.5m A.H.D.	ZONE 5		3.6m to 4.0m A.H.D.
ZONE 3		2.6m to 3.0m A.H.D.	ZONE 6		4.1m to 4.5m A.H.D.
		Land Below H.A.T. (i.e. below 1.95m A.H.D.)			

H.A.T. = 1.95m A.H.D. in this region

BOWEN SHIRE - MAP 05A STORM SURGE HAZARD



NOTE: Detailed contour information not available in this area, therefore hazard zones are indicative only.



BOWEN SHIRE PLANNING SCHEME

1 June 2006

LEGEND
National Storm Tide Mapping Zones (m AHD)

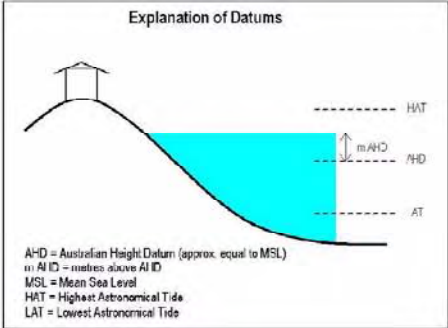
<p>ZONE 1 1.95m to 2.0m A.H.D.</p> <p>ZONE 2 2.1m to 2.5m A.H.D.</p> <p>ZONE 3 2.6m to 3.0m A.H.D.</p>	<p>Land Below H.A.T. (i.e. below 1.95m A.H.D.) </p> <p>ZONE 4 3.1m to 3.5m A.H.D.</p> <p>ZONE 5 3.6m to 4.0m A.H.D.</p> <p>ZONE 6 4.1m to 4.6m A.H.D.</p> <p>H.A.T. = 1.95m A.H.D. in this region</p>
---	--

BOWEN SHIRE - MAP 05B STORM SURGE HAZARD

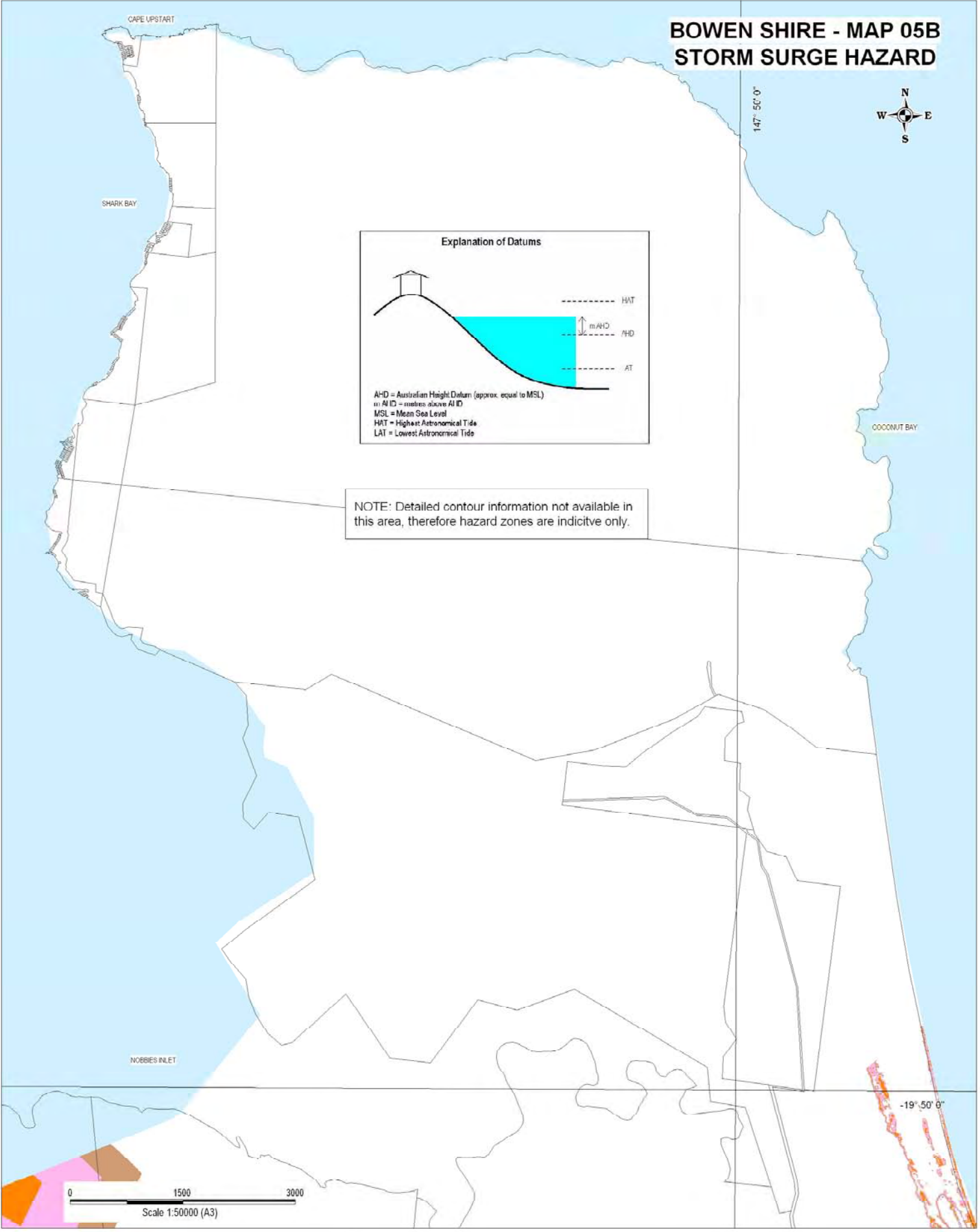


147° 50' 0"

-19° 50' 0"



NOTE: Detailed contour information not available in this area, therefore hazard zones are indicative only.



BOWEN SHIRE PLANNING SCHEME

1 June 2006

LEGEND

National Storm Tide Mapping Zones (m AHD)

<p>Land Below H.A.T. (i.e below 1.95m A.H.D.)</p> <p>ZONE 1 1.95m to 2.0m A.H.D.</p> <p>ZONE 2 2.1m to 2.5m A.H.D.</p> <p>ZONE 3 2.6m to 3.0m A.H.D.</p>	<p>ZONE 4 3.1m to 3.5m A.H.D.</p> <p>ZONE 5 3.6m to 4.0m A.H.D.</p> <p>ZONE 6 4.1m to 4.5m A.H.D.</p> <p>H.A.T. = 1.95m A.H.D. in this region</p>
---	--

BOWEN SHIRE - MAP 05C STORM SURGE HAZARD

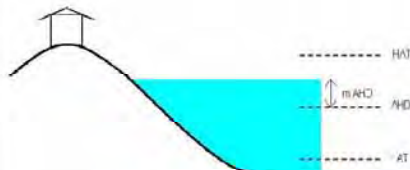


ABBOT BAY

147° 50' 0"

NOTE: Detailed contour information not available in this area, therefore hazard zones are indicative only.

Explanation of Datums



AHD = Australian Height Datum (approx. equal to MSL)
 m(AHD) = metres above AHD
 MSL = Mean Sea Level
 HAT = Highest Astronomical Tide
 LAT = Lowest Astronomical Tide

0 1500 3000
 Scale 1:50000 (A3)



BOWEN SHIRE PLANNING SCHEME

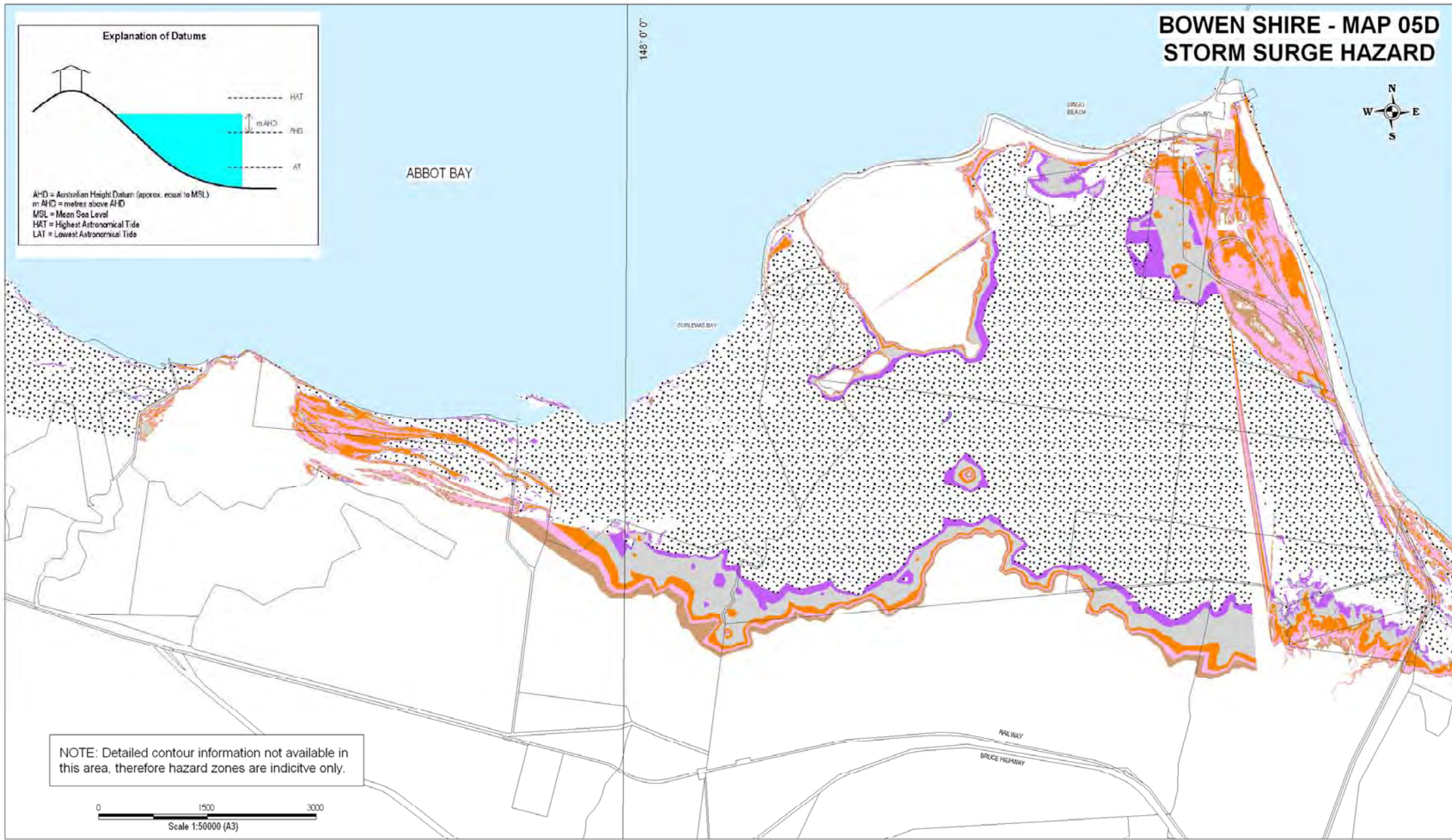
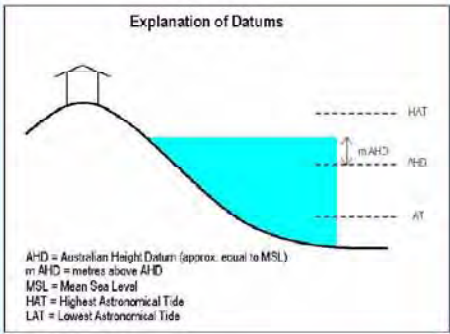
1 June 2006

LEGEND

National Storm Tide Mapping Zones (m AHD)

	Land Below H.A.T. (i.e. below 1.95m A.H.D.)	ZONE 4		3.1m to 3.5m A.H.D.	
ZONE 1		1.95m to 2.0m A.H.D.	ZONE 5		3.6m to 4.0m A.H.D.
ZONE 2		2.1m to 2.5m A.H.D.	ZONE 6		4.1m to 4.5, A.H.D.
ZONE 3		2.6m to 3.0m A.H.D.			H.A.T. = 1.95m A.H.D. in this region

BOWEN SHIRE - MAP 05D STORM SURGE HAZARD



NOTE: Detailed contour information not available in this area, therefore hazard zones are indicative.

0 1500 3000
 Scale 1:50000 (A3)



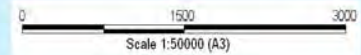
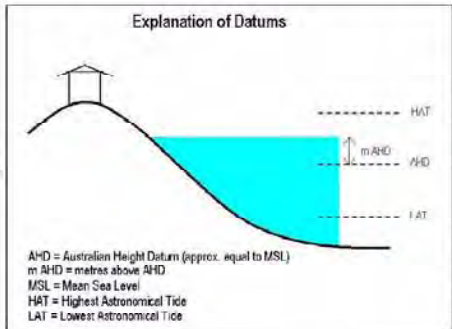
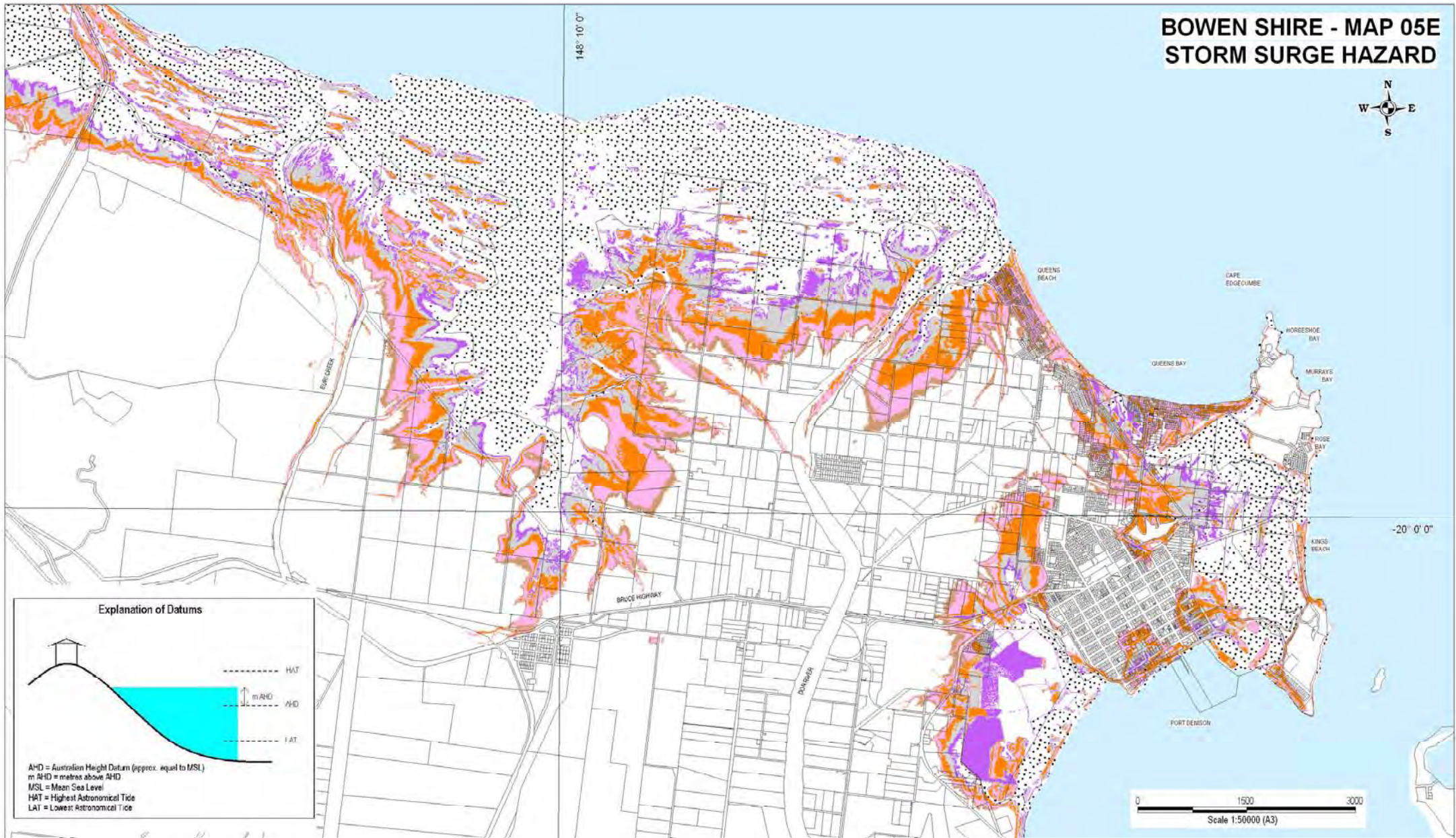
BOWEN SHIRE PLANNING SCHEME

1 June 2006

LEGEND
 National Storm Tide Mapping Zones (m AHD)

	Land Below H.A.T. (i.e below 1.95m A.H.D.)	ZONE 4		3.1m to 3.5m A.H.D.	
ZONE 1		1.95m to 2.0m A.H.D.	ZONE 5		3.6m to 4.0m A.H.D.
ZONE 2		2.1m to 2.5m A.H.D.	ZONE 6		4.1m to 4.5m A.H.D.
ZONE 3		2.6m to 3.0m A.H.D.	H.A.T. = 1.95m A.H.D. in this region		

BOWEN SHIRE - MAP 05E STORM SURGE HAZARD



BOWEN SHIRE PLANNING SCHEME

1 June 2006

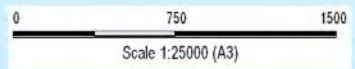
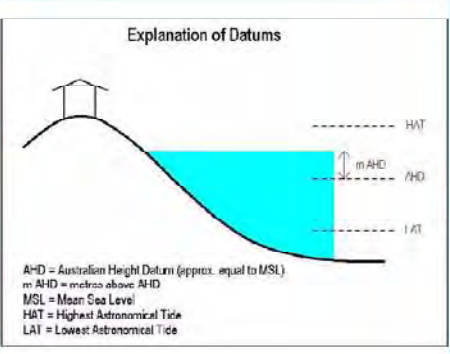
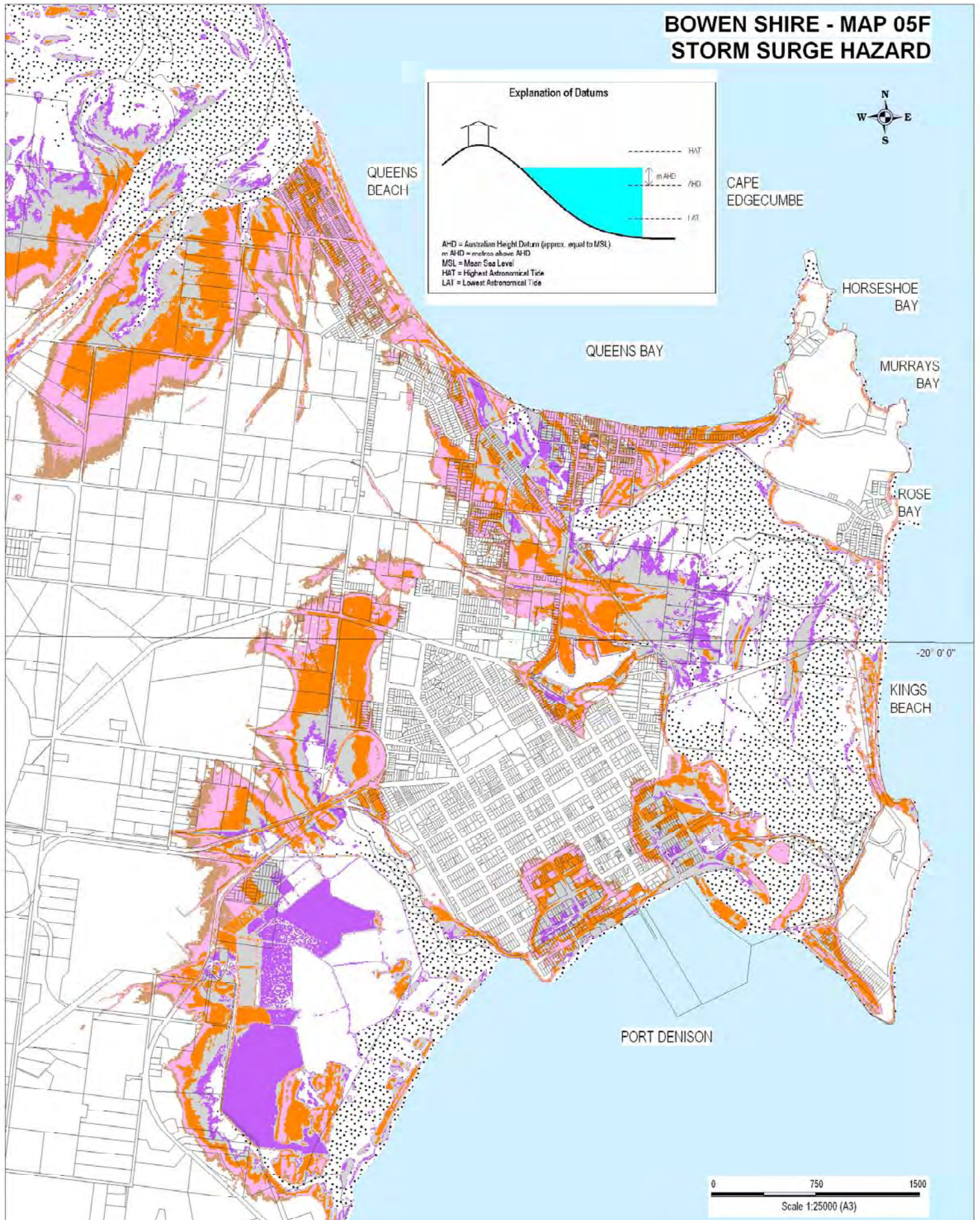
LEGEND

National Storm Tide Mapping Zones (m AHD)

	Land Below H.A.T. (i.e. below 1.95m A.H.D.)		ZONE 4	3.1m to 3.5m A.H.D.	
	ZONE 1	1.95m to 2.0m A.H.D.		ZONE 5	3.6m to 4.0m A.H.D.
	ZONE 2	2.1m to 2.5m A.H.D.		ZONE 6	4.1m to 4.6m A.H.D.
	ZONE 3	2.6m to 3.0m A.H.D.			

H.A.T. = 1.95m A.H.D. in this region

BOWEN SHIRE - MAP 05F STORM SURGE HAZARD



BOWEN SHIRE PLANNING SCHEME

1 June 2006

LEGEND

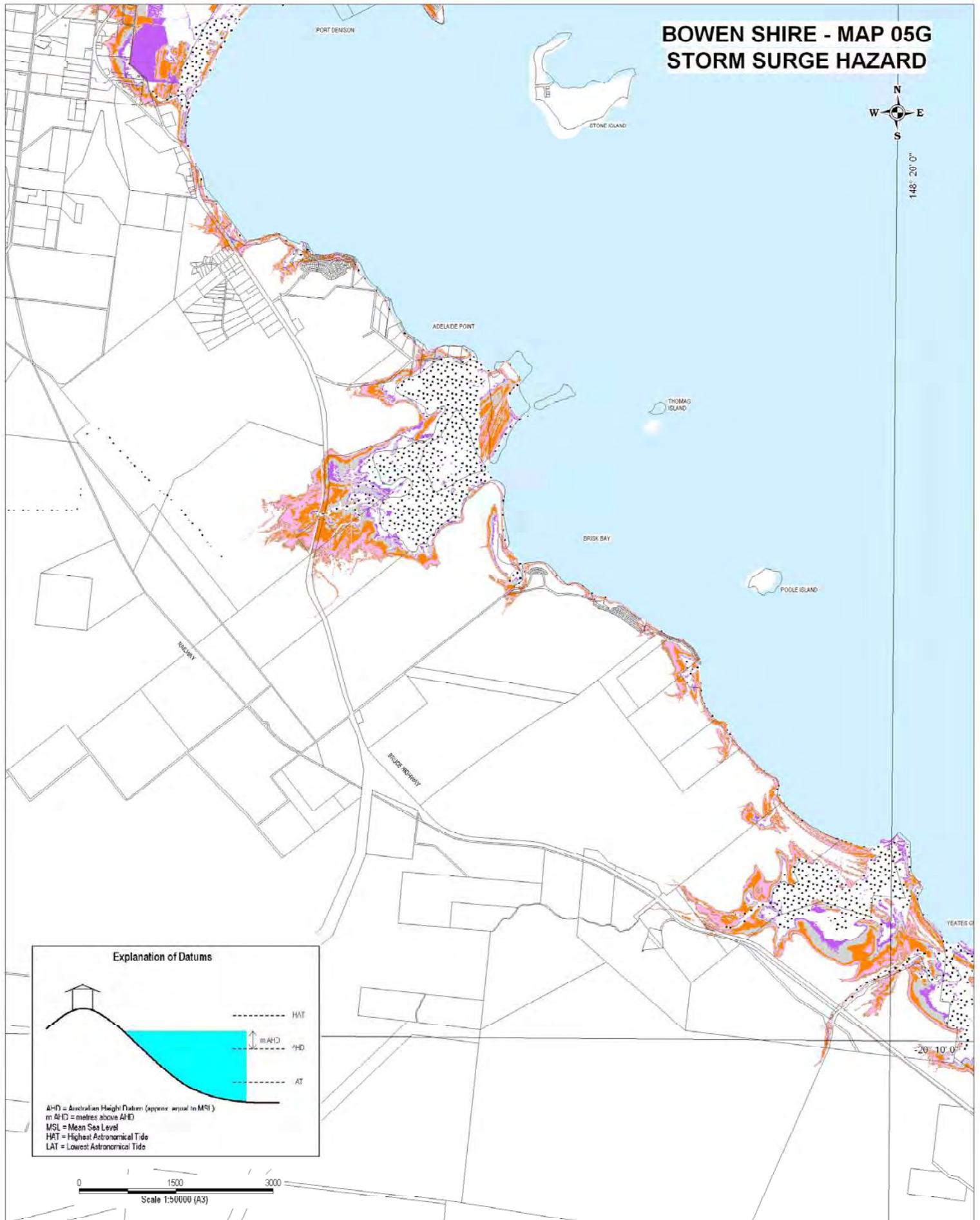
National Storm Tide Mapping Zones (m AHD)

	Land Below H.A.T. (i.e. below 1.95m A.H.D.)		ZONE 4	3.1m to 3.5m A.H.D.	
	ZONE 1	1.95m to 2.0m A.H.D.		ZONE 5	3.6m to 4.0m A.H.D.
	ZONE 2	2.1m to 2.5m A.H.D.		ZONE 6	4.1m to 4.5m A.H.D.
	ZONE 3	2.6m to 3.0m A.H.D.	H.A.T. = 1.95m A.H.D. in this region		

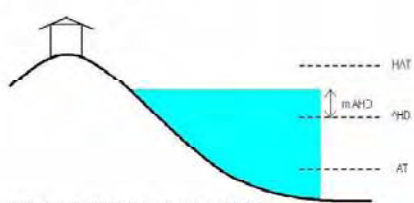
BOWEN SHIRE - MAP 05G STORM SURGE HAZARD



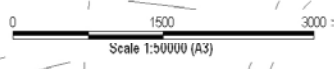
148° 20' 0"



Explanation of Datums



AHD = Australian Height Datum (approx equal to MSL)
 m AHD = metres above AHD
 MSL = Mean Sea Level
 HAT = Highest Astronomical Tide
 LAT = Lowest Astronomical Tide



BOWEN SHIRE PLANNING SCHEME

1 June 2006

LEGEND

National Storm Tide Mapping Zones (m AHD)

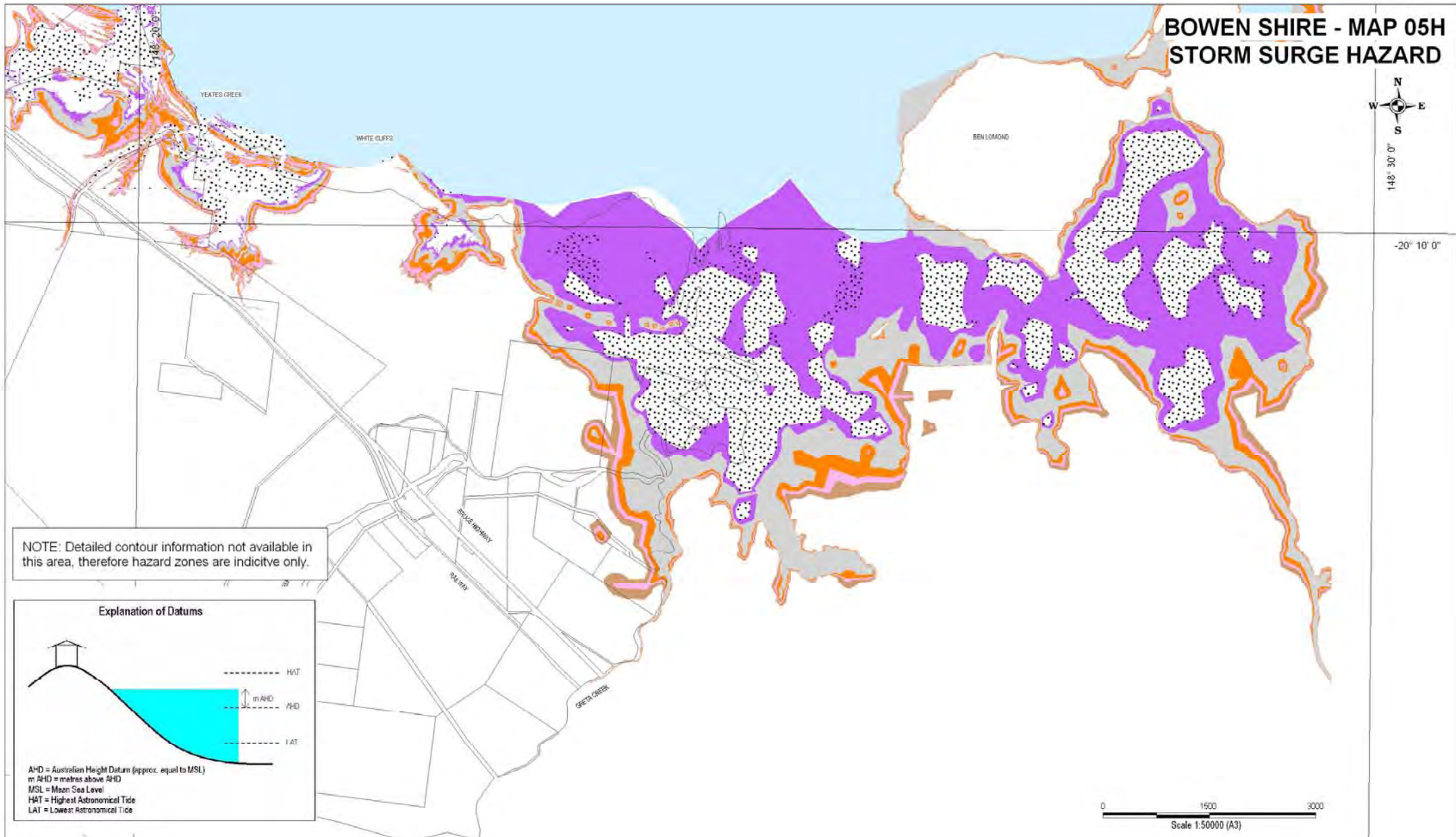
<p>ZONE 1 1.95m to 2.0m A.H.D.</p> <p>ZONE 2 2.1m to 2.5m A.H.D.</p> <p>ZONE 3 2.6m to 3.0m A.H.D.</p>	<p>Land Below H.A.T. (i.e below 1.95m A.H.D.) </p> <p>ZONE 4 3.1m to 3.5m A.H.D.</p> <p>ZONE 5 3.6m to 4.0m A.H.D.</p> <p>ZONE 6 4.1m to 4.5m A.H.D.</p>
---	---

H.A.T. = 1.95m A.H.D. in this region

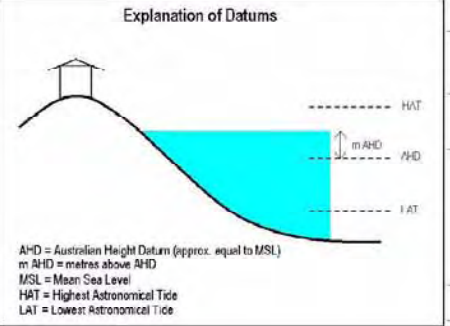
BOWEN SHIRE - MAP 05H STORM SURGE HAZARD



148° 30' 0"
-20° 10' 0"



NOTE: Detailed contour information not available in this area, therefore hazard zones are indicative only.



BOWEN SHIRE PLANNING SCHEME

1 June 2006

LEGEND
National Storm Tide Mapping Zones (m AHD)

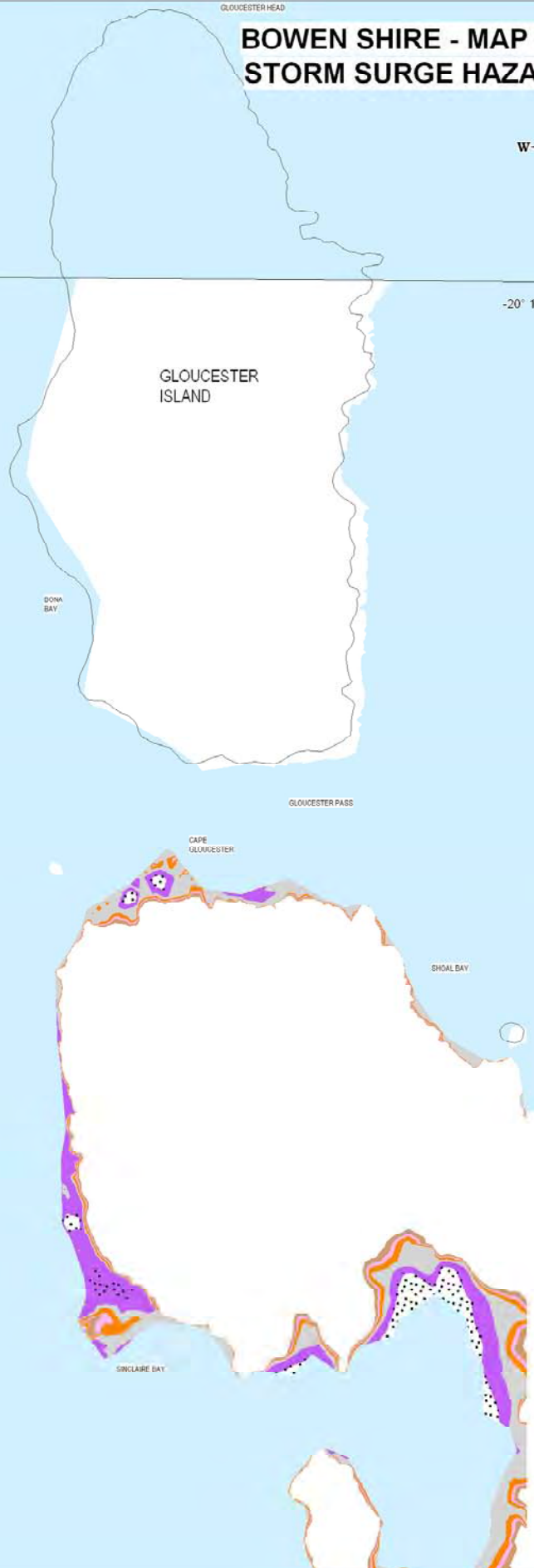
<p>ZONE 1 1.95m to 2.0m A.H.D.</p> <p>ZONE 2 2.1m to 2.5m A.H.D.</p> <p>ZONE 3 2.6m to 3.0m A.H.D.</p>	<p>Land Below H.A.T. (i.e. below 1.95m A.H.D.) </p> <p>ZONE 4 3.1m to 3.5m A.H.D.</p> <p>ZONE 5 3.6m to 4.0m A.H.D.</p> <p>ZONE 6 4.1m to 4.6m A.H.D.</p> <p>H.A.T. = 1.95m A.H.D. in this region</p>
---	--

BOWEN SHIRE - MAP 05 I STORM SURGE HAZARD

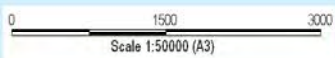
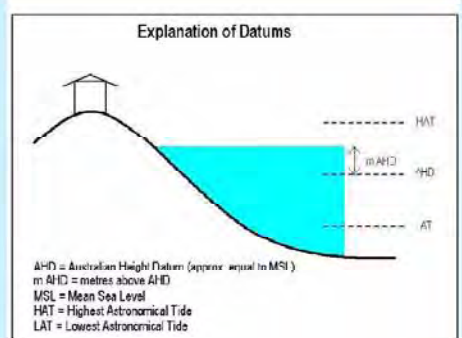


148° 30' 0"

-20° 10' 0"



NOTE: Detailed contour information not available in this area, therefore hazard zones are indicative only.



BOWEN SHIRE PLANNING SCHEME

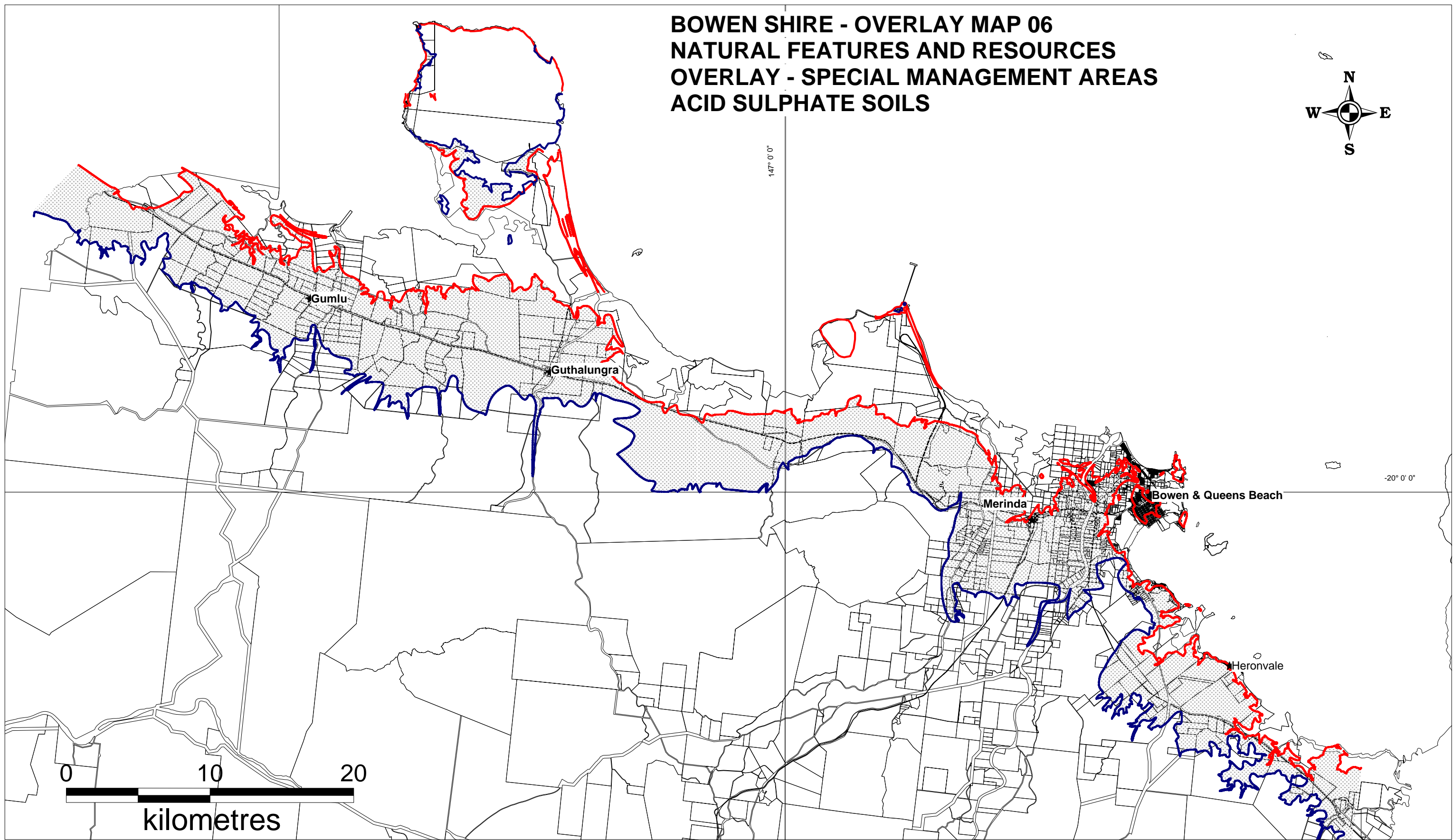
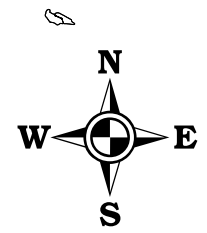
1 June 2006

LEGEND

National Storm Tide Mapping Zones (m AHD)

<p>ZONE 1 1.95m to 2.0m A.H.D.</p> <p>ZONE 2 2.1m to 2.5m A.H.D.</p> <p>ZONE 3 2.6m to 3.0m A.H.D.</p>	<p>Land Below H.A.T. (i.e below 1.95m A.H.D.) </p> <p>ZONE 4 3.1m to 3.5m A.H.D.</p> <p>ZONE 5 3.6m to 4.0m A.H.D.</p> <p>ZONE 6 4.1m to 4.5m A.H.D.</p> <p>H.A.T. = 1.95m A.H.D. in this region</p>
---	---

**BOWEN SHIRE - OVERLAY MAP 06
NATURAL FEATURES AND RESOURCES
OVERLAY - SPECIAL MANAGEMENT AREAS
ACID SULPHATE SOILS**

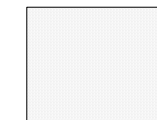


***BOWEN SHIRE
PLANNING
SCHEME***

LEGEND

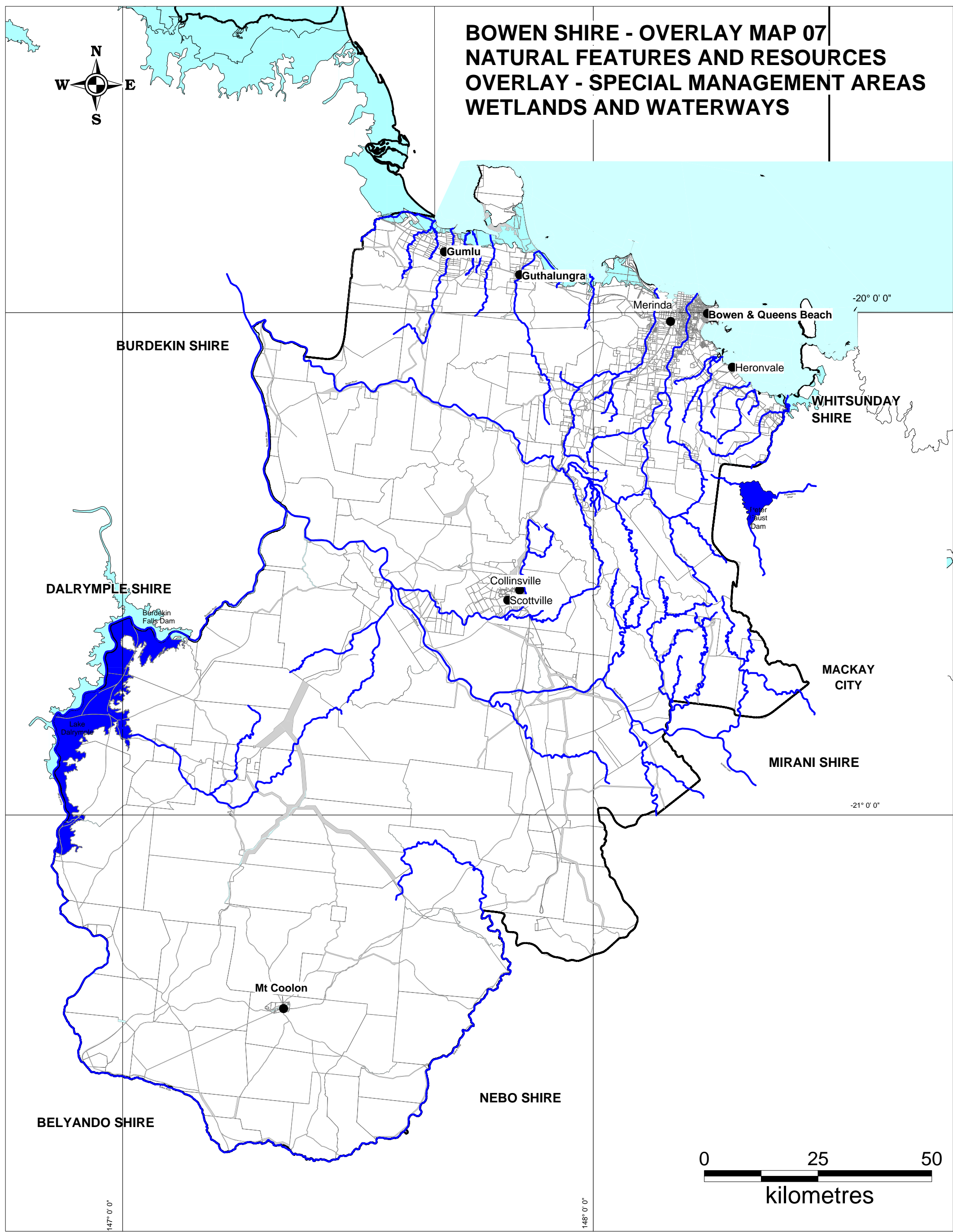
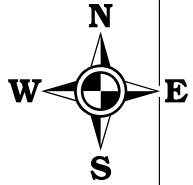
- 5 m Contour
- 20 m Contour

Potential Acid Sulphate Soils are present along the Bowen Shire coastline at RL 5.00 m AHD and below






Note: For the purpose of interpreting assessment categories, the area below RL 20metres AHD where construction may involve excavation below 5 metres AHD is represented by the shaded area as indicated between the contours

BOWEN SHIRE - OVERLAY MAP 07 NATURAL FEATURES AND RESOURCES OVERLAY - SPECIAL MANAGEMENT AREAS WETLANDS AND WATERWAYS

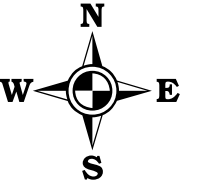


BOWEN SHIRE PLANNING SCHEME

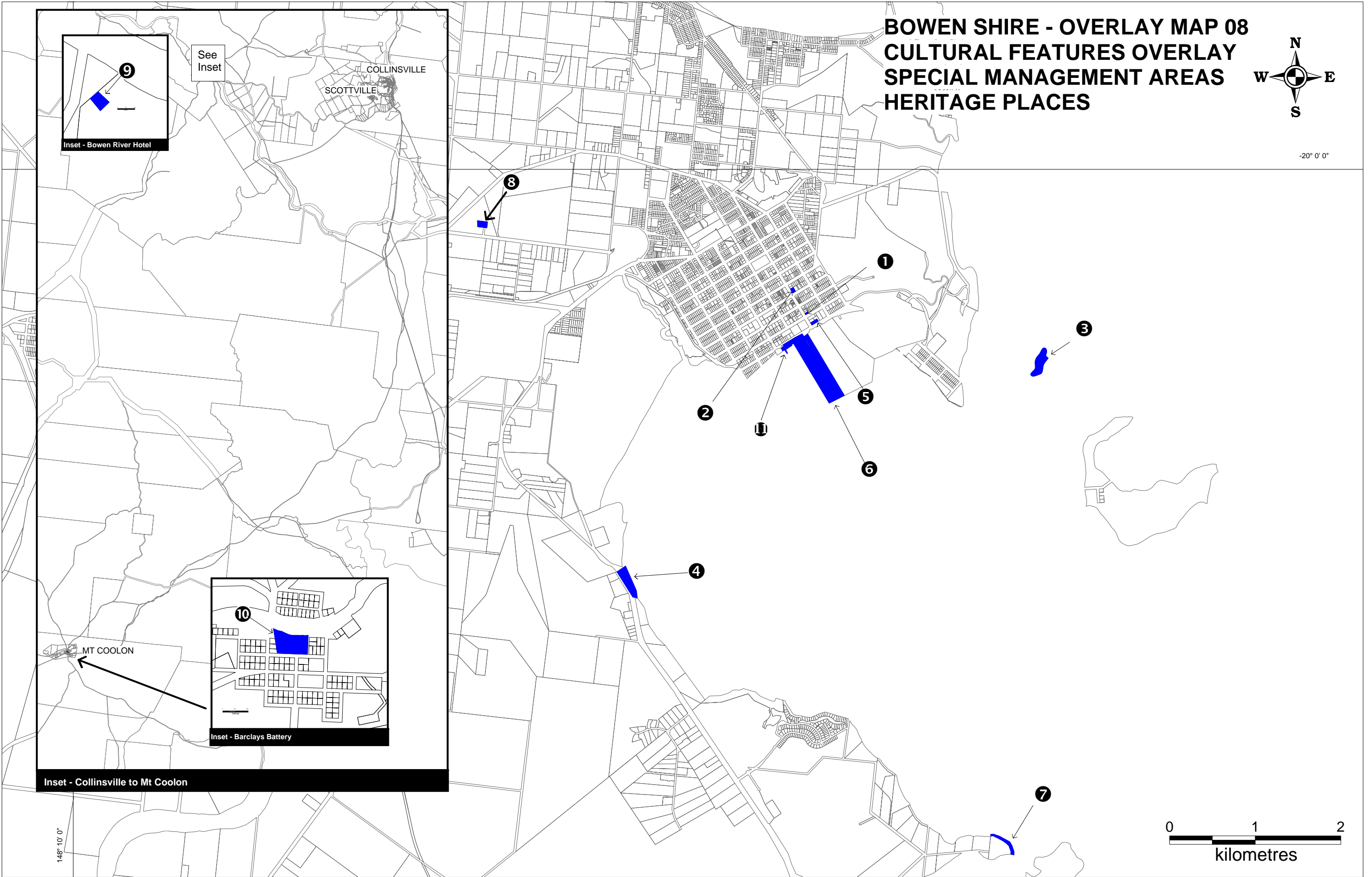
LEGEND

-  Major Rivers and Creeks
-  Waterways Special Management Areas
-  Wetlands Special Management Areas

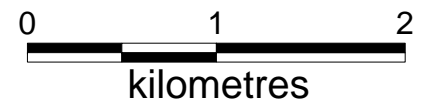
**BOWEN SHIRE - OVERLAY MAP 08
CULTURAL FEATURES OVERLAY
SPECIAL MANAGEMENT AREAS
HERITAGE PLACES**



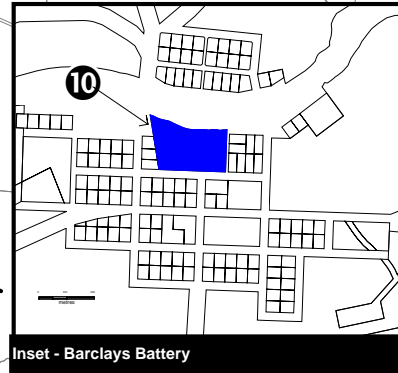
-20° 0' 0"



148° 10' 0"

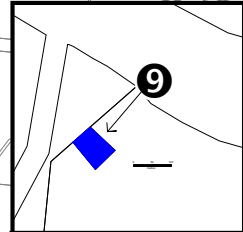


Inset - Collinsville to Mt Coolon



Inset - Barclays Battery

Inset - Bowen River Hotel



See Inset

COLLINSVILLE
SCOTTVILLE

***BOWEN SHIRE
PLANNING
SCHEME***



1 June 2006

LEGEND

HERITAGE PLACES

- | | | | |
|--------------------------|----------------------|--------------------------------|---|
| ① Harbour Board Building | ④ Gordon Beach | ⑦ Adelaide Point Rock Terraces | ⑩ Barclays Battery |
| ② Court House | ⑤ Customs House Hill | ⑧ Flemington Road Cemetery | ⑪ World War 2 Catalina Flying Boat Ramp |
| ③ North Head Lighthouse | ⑥ Harbour Jetty | ⑨ Bowen River Hotel | |