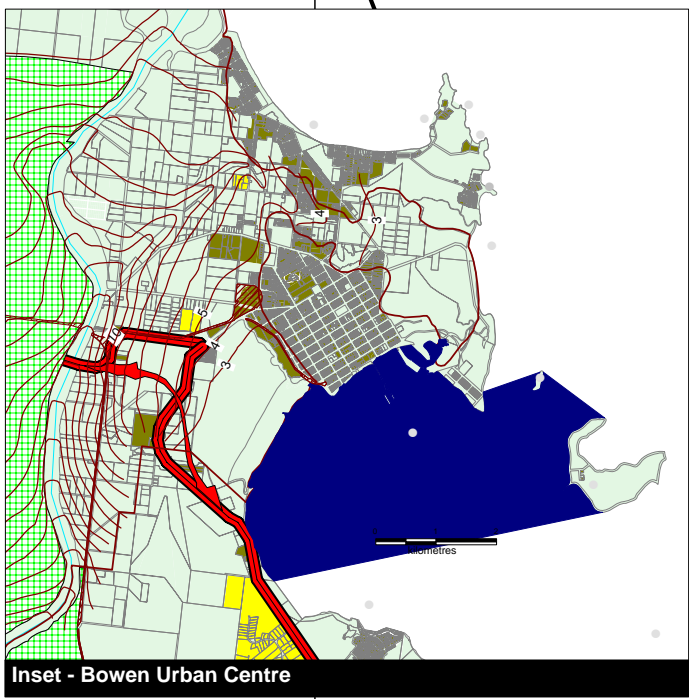
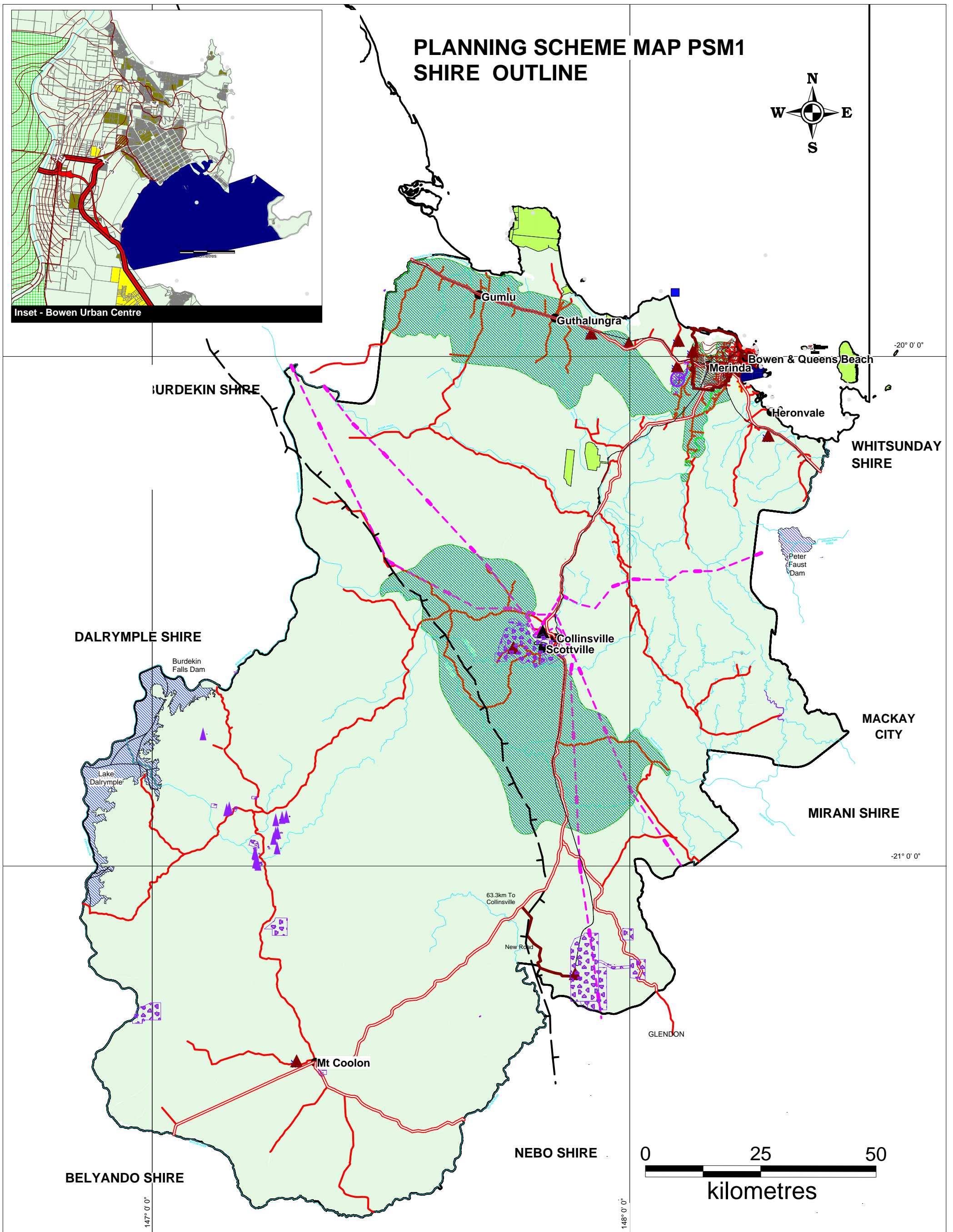


PLANNING SCHEME MAP PSM1 SHIRE OUTLINE



Inset - Bowen Urban Centre



BOWEN SHIRE PLANNING SCHEME

1 June 2006

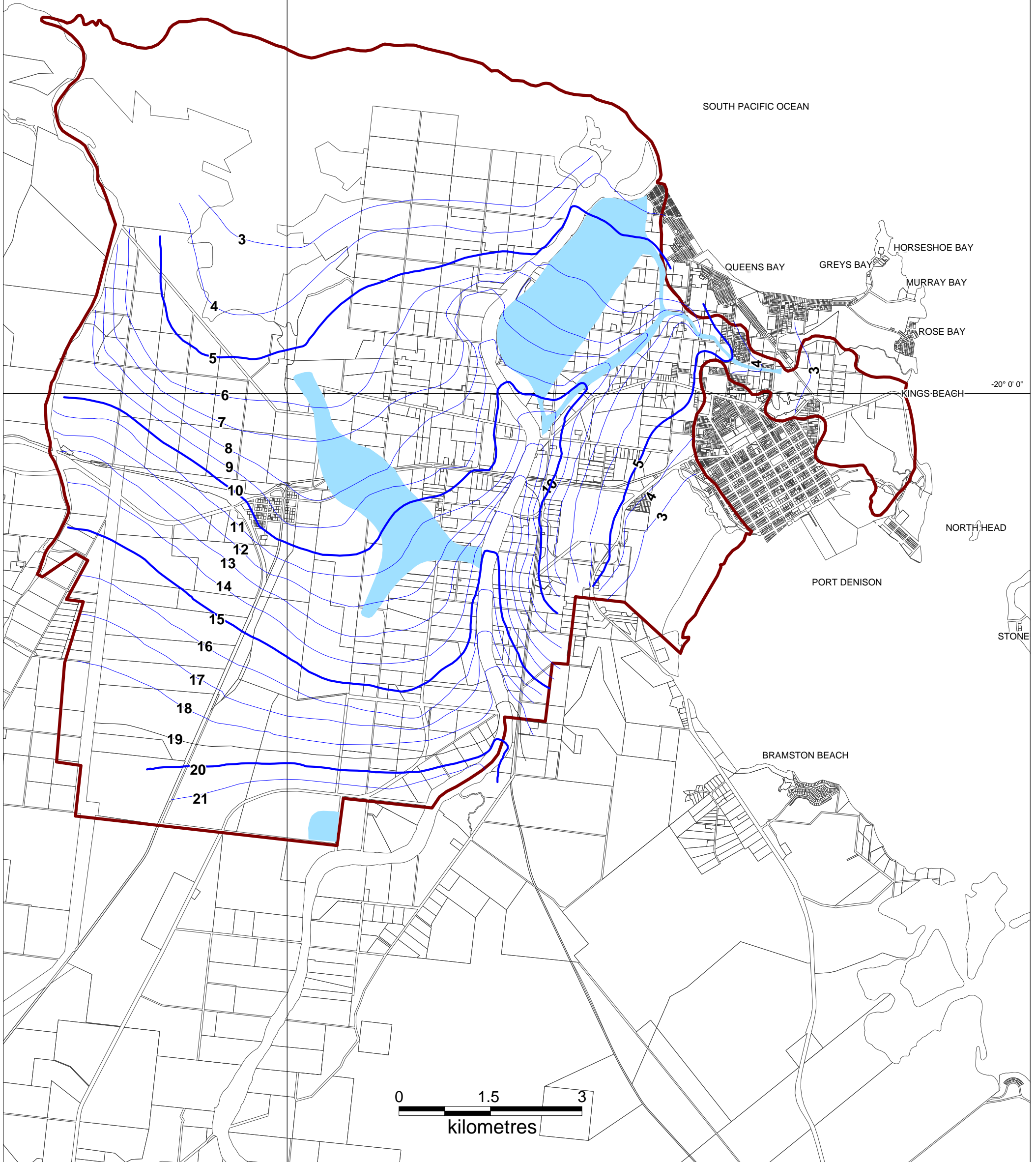
LEGEND

- | | | |
|------------------------------|-------------------------|-------------------------------|
| ● Centres | ▲ Extractive Industry | ▨ Don River Flood Plain |
| ▲ Collinsville Power Station | — State Controlled Road | ■ Protected Areas |
| — Proposed Cerito Alignment | — Higher Order Road | ■ Agricultural Land |
| — Major Rivers | — Proposed Bowen Bypass | ▨ Key Resource Area |
| — Major Gas Pipelines | ■ Urban | ▨ Mining Tenements |
| — Major Powerlines | ■ Park Residential | ■ Abbot Point Port Facilities |
| — Rail Corridor | ■ Rural | ■ Bowen Boat Harbour |

PLANNING SCHEME MAP PSM2 DON RIVER FLOOD PLAIN - PLANNED FLOOD PROFILE



148° 0' 0"



LEGEND

— Design Flood Contours (m AHD)

— Don River Flood Plain Area

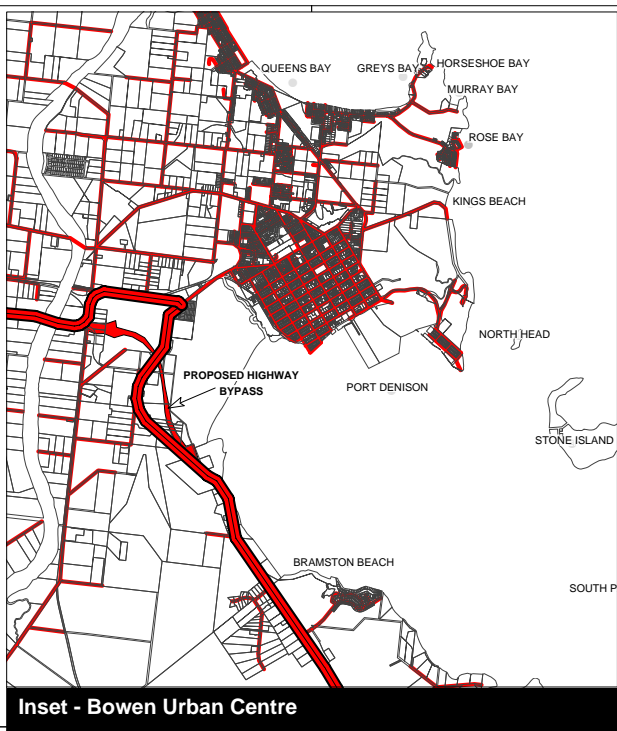
Flood contours based on the planned flood discharge. The planned flood discharge has an annual exceedance probability of 1%.

■ Likely areas of high velocity > 3m/s

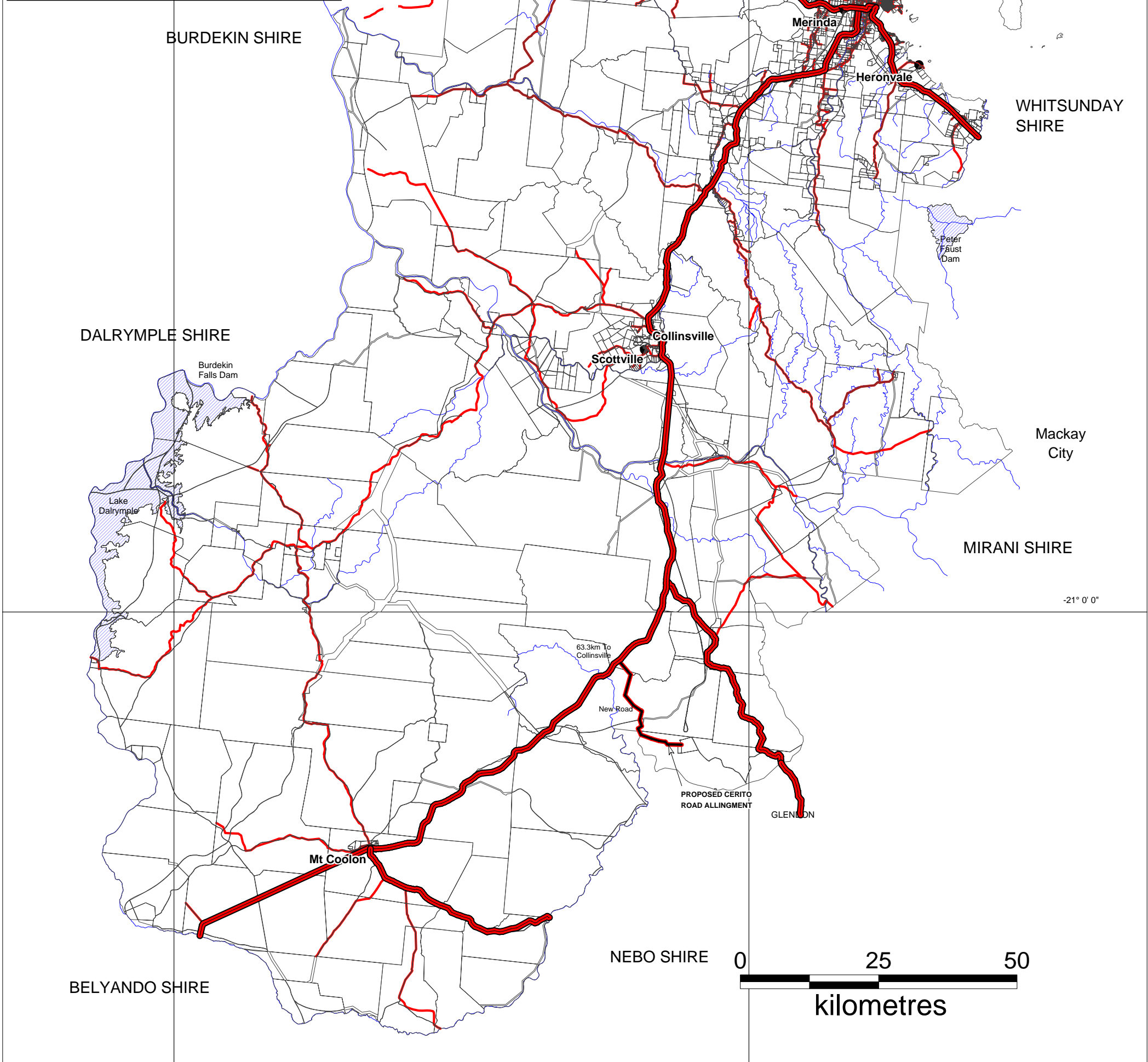


**BOWEN SHIRE
PLANNING
SCHEME**

PLANNING SCHEME MAP PSM3 SHIRE ROAD HIERARCHY



Inset - Bowen Urban Centre



BOWEN SHIRE PLANNING SCHEME

LEGEND

- Centres
- Major Rivers
- State Controlled Road
- Higher Order Road