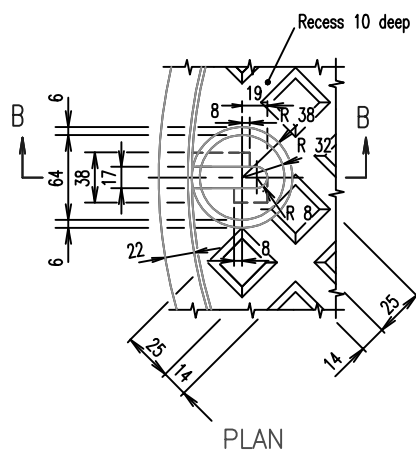
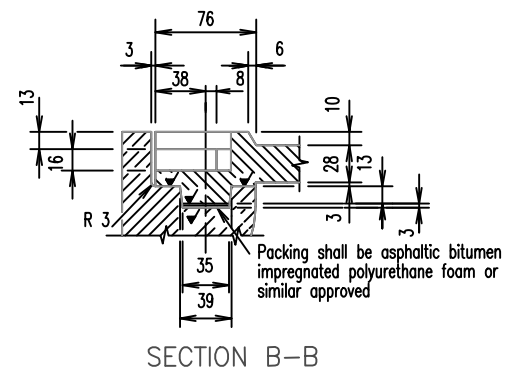


SECTION A-A

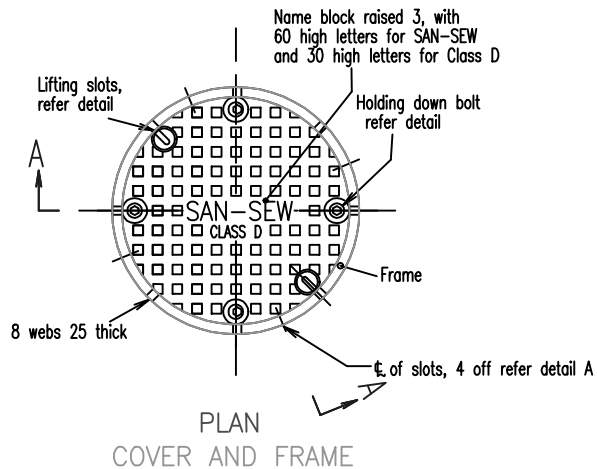


PLAN

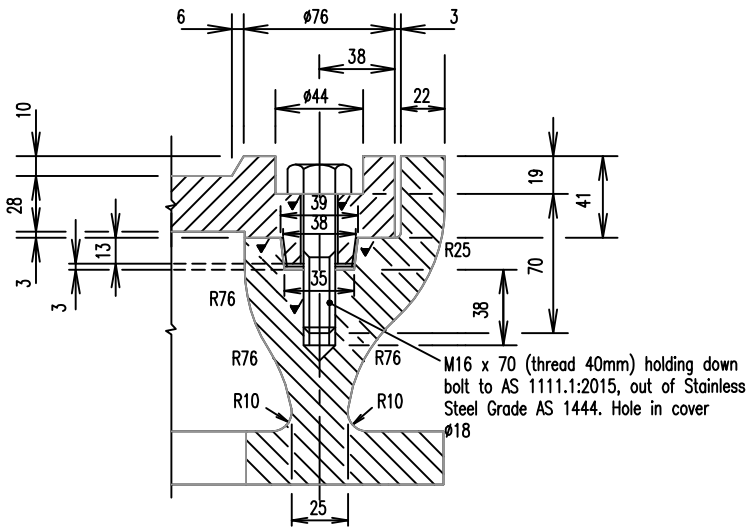


SECTION B-B

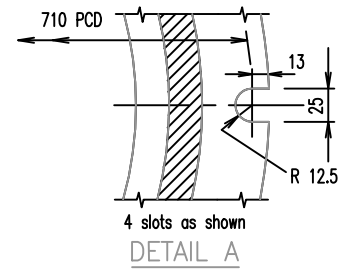
DETAIL AT LIFTING SLOTS



PLAN COVER AND FRAME



DETAIL OF HOLDING DOWN BOLTS



DETAIL A

LEGEND

✓ Denotes machined surface.

NOTES:

1. Mass of cover = 66 kg approx.
2. Mass of frame = 100 kg approx.
3. Cover and frame, grey cast iron Grade \geq T220 to AS 1830.
4. Cover design Class D to AS 3996.
5. Alternative C.I. covers and frames designed to Austroads bridge code (W7 wheel loads) will be acceptable if manufactured to provide minimum clear opening as shown.
6. Bitumen paint cover & frame to AS/NZS 3750.4.
7. All dimensions in millimetres.

REVISIONS	DATE
C DEVELOPMENT MANUAL UPDATES AND AMENDMENTS 2018	26/10/18
B GENERAL UPDATES AND STANDARD REFERENCING AMENDMENTS	6/5/16
A ORIGINAL ISSUE	1/3/97



Email: info@whitsundayrc.qld.gov.au Web: www.whitsundayrc.qld.gov.au

BOWEN
67 Herbert St
Bowen 4805 Q
Ph 07 4761 3600

COLLINSVILLE
Cnr Stanley & Conway Sts
Collinsville 4804 Q
Ph 07 4785 5366

PROSERPINE
83-85 Main St
Proserpine 4800 Q
Ph 07 4945 0200

ACCESS CHAMBERS
CAST IRON COVER AND FRAME
BOLT DOWN

SEWERAGE
Standard
Drawing
S-0026

A	B	C
---	---	---