

SECTION C-C

PLAN

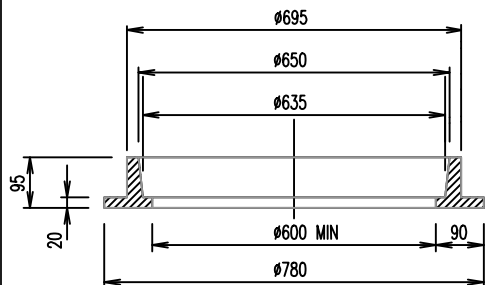
PLAN

SECTION E - E

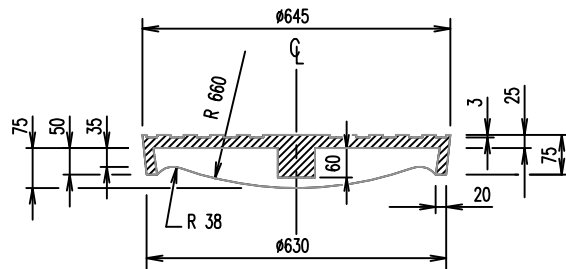
SECTION D-D

LIFTING SLOTS - DETAIL A

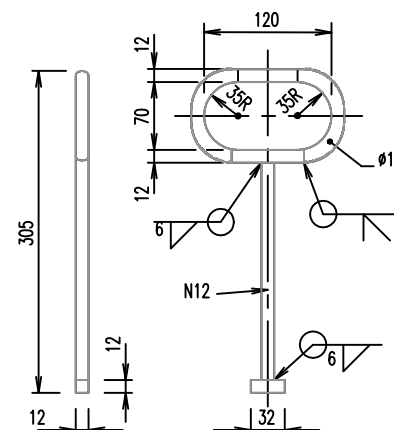
SLOTS - DETAIL B



SECTION B-B

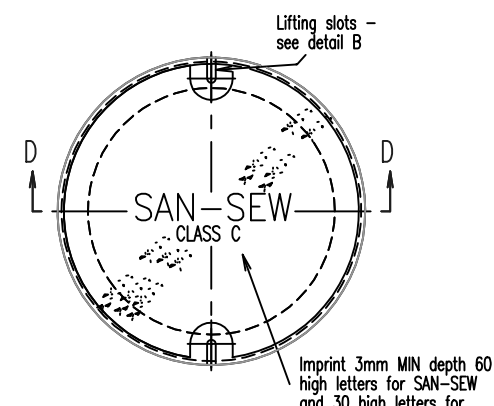


SECTION A-A



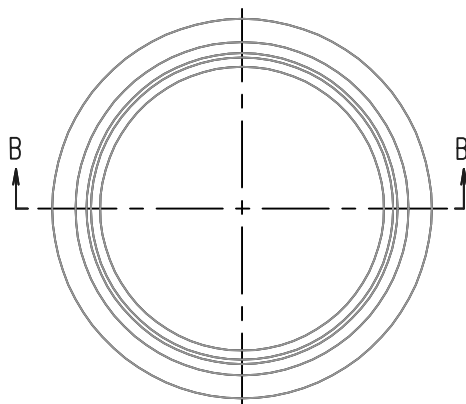
STEEL LIFTING KEY

Hot dip galvanized to AS 4680:2006

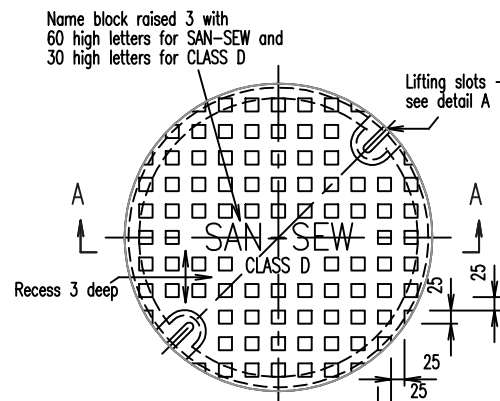


PLAN

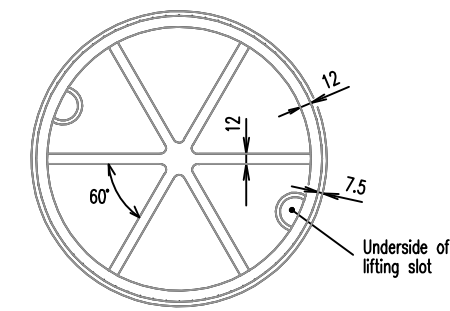
PLAN - C.I. CONCRETE FILLED COVER



PLAN - FRAME



PLAN - C.I. COVER



UNDERSIDE OF C.I. COVER

NOTES:

1. Mass of C.I. frames = 42 kg approx.
2. Mass of C.I. cover = 46 kg approx.
3. Cover and frame, grey cast iron Grade  $\geq$  T220 to AS 1830.
4. All steel Grade 400 to AS/NZS 3679.1.
5. Concrete infill N32/10 in accordance with AS 1379 and AS 3600.
6. All welds to AS 1554.1  
Welding symbols to AS 1101.3
7. Alternative C.I. covers and frames designed to Austrroads bridge code (W7 wheel loads) will be acceptable if manufactured to provide minimum clear opening.
8. Bitumen point cover and frame to AS/NZS 3750.4.
9. Covers and frames to AS 3996
10. All dimensions in millimetres.

REVISIONS	DATE
C DEVELOPMENT MANUAL UPDATES AND AMENDMENTS	26/10/18
B GENERAL UPDATES AND STANDARD REFERENCING AMENDMENTS	6/5/16
A ORIGINAL ISSUE	1/3/97



Email: [info@whitsundayrc.qld.gov.au](mailto:info@whitsundayrc.qld.gov.au) Web: [www.whitsundayrc.qld.gov.au](http://www.whitsundayrc.qld.gov.au)

BOWEN  
67 Herbert St  
Bowen 4805 Q  
Ph 07 4761 3600

COLLINSVILLE  
Cnr Stanley & Conway Sts  
Collinsville 4804 Q  
Ph 07 4785 5366

PROSERPINE  
83-85 Main St  
Proserpine 4800 Q  
Ph 07 4945 0200

ACCESS CHAMBERS  
RECTANGULAR INCLUDING  
C.I. COVERS & FRAMES

SEWERAGE  
Standard  
Drawing  
S-0025

A B C